



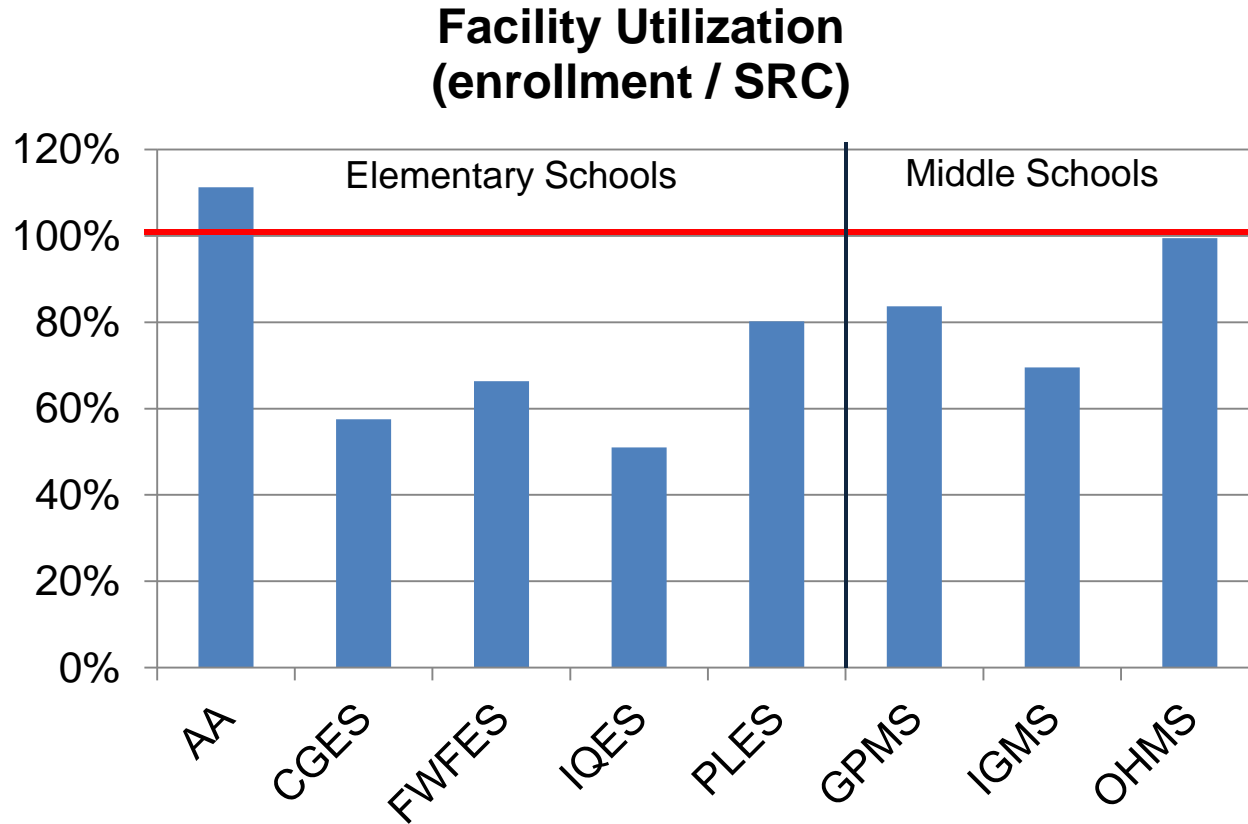
# Accokeek Academy Over-Enrollment Relief Options

March 19, 2019

Accokeek Academy

- Background
- Facility Utilization
- Review of Options
- Next Steps

# Fall 2018 Facility Utilization Accokeek Academy & Adjacent Schools



- At the request of AA parents the Boundary Task Force was formed by Board Member Sonya Williams in Oct. 2017
- Comprised of stakeholders including PTAs and HOAs
- Task Force met with content specialists and experts to obtain information about topics that influence boundary change decisions
- Goal of AA Boundary Task Force was to present a recommendation for BOE and Administration consideration

## Boundary Task Force Recommendation

The Boundary Task Force offered a unanimous recommendation in October 2018:

“Utilizing the funding associated with Potomac Landing Elementary School (see 2017-2022 CIP Program, pg 607, has \$37,194,522 slated for PLES Renovation adding 20,000 sf) **transform PLES into the 2nd K-8 Academy and create additional middle school seats.** Also consider allowing students from Indian Queen to attend the new PL in middle school instead of Oxon Hill Middle School. And lastly, **send some of the eastern PLES students to Ft Washington Forest.**”

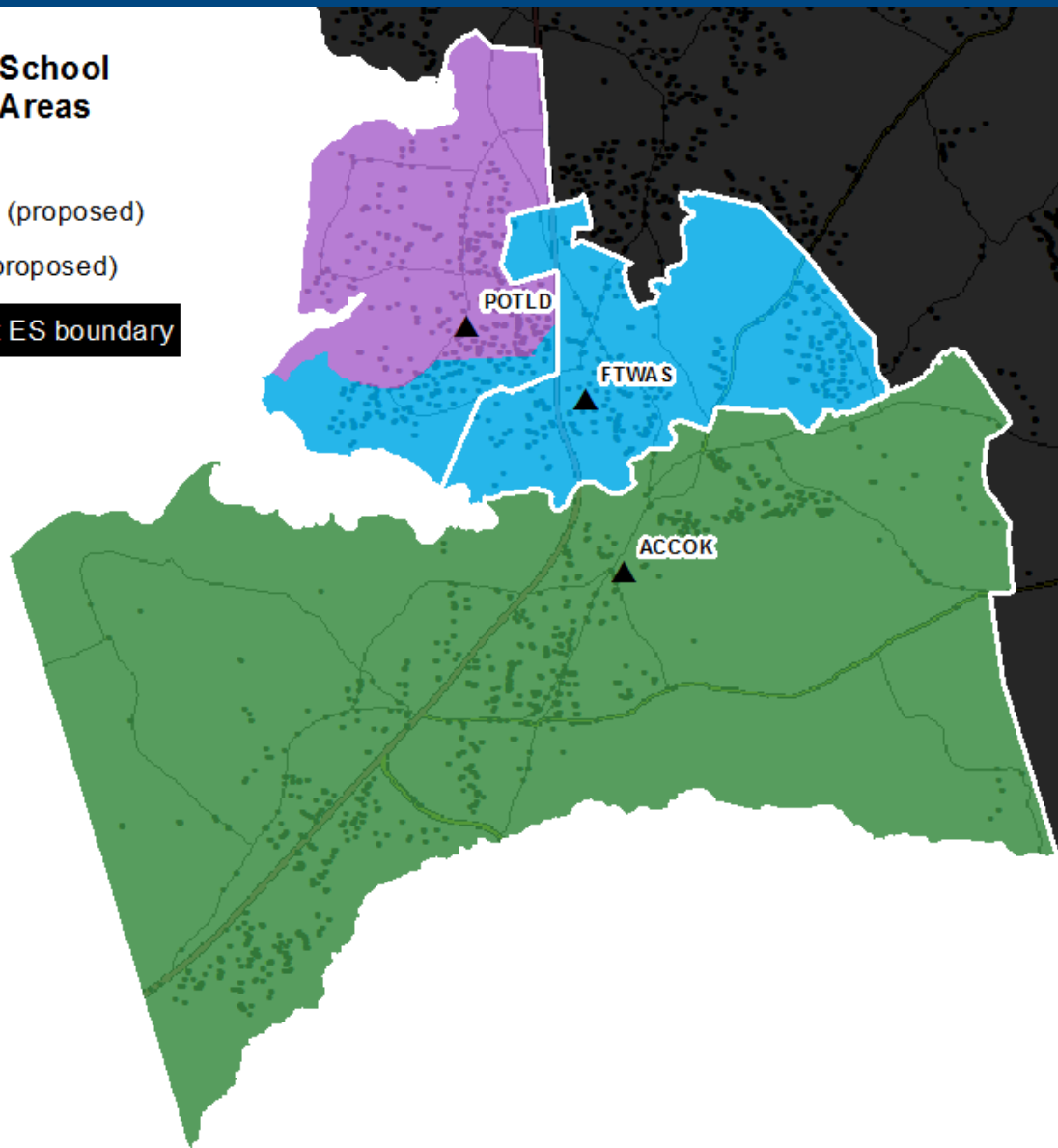
- Serve **240** elementary and **400** middle school students at PLES
  - Reassign a portion of PLES elementary enrollment to FWFES boundary
  - Middle school enrollment will come from PLES and FWFES students who currently feed into AA plus IQES students who currently feed into OHMS

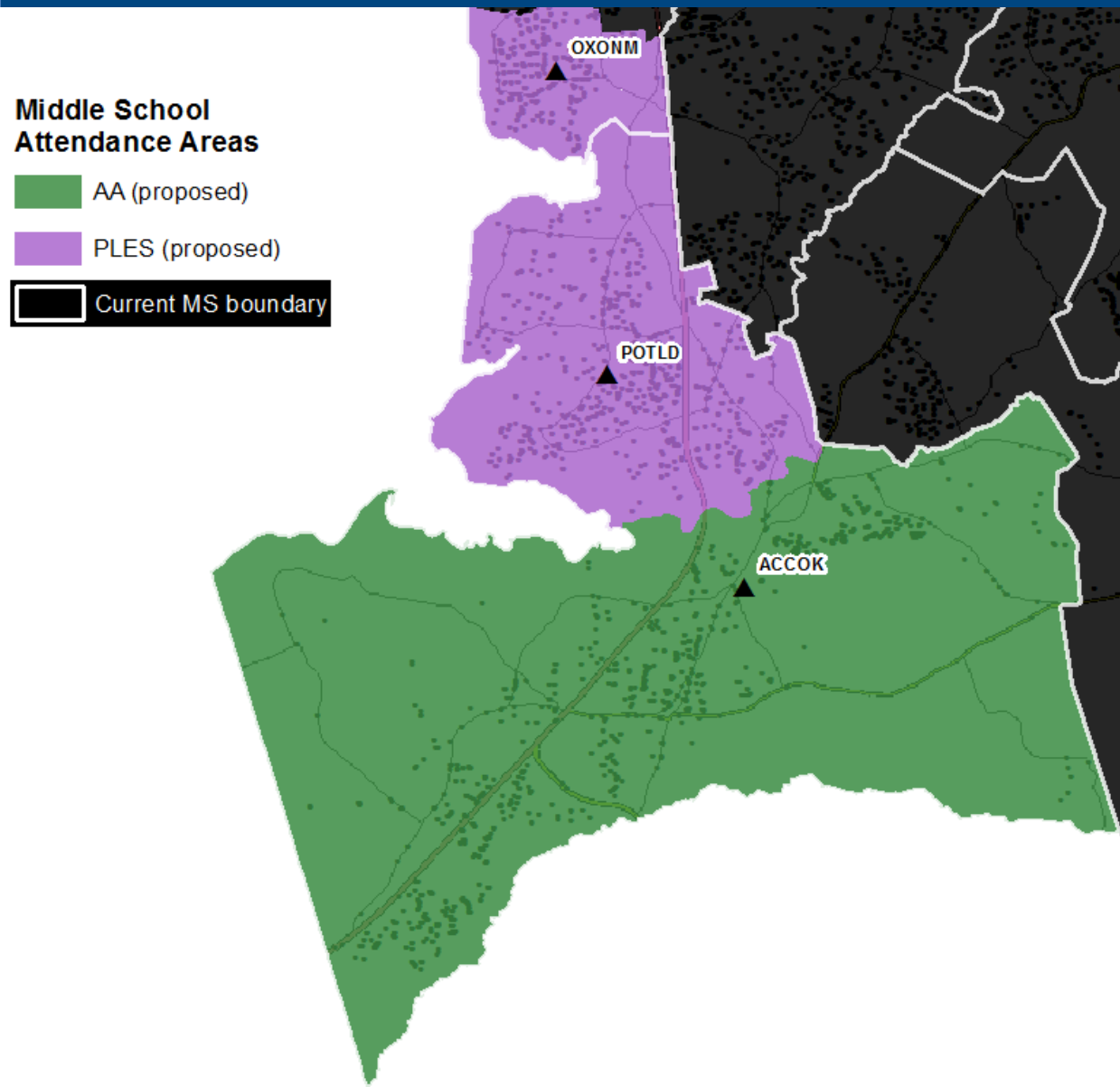
## Implementation

- Phase in new PLES elementary boundary starting with Kindergarten only in **Sept 2020**
- Phase in new PLES middle school boundary starting with 6<sup>th</sup> grade in **Sept 2020**
  - No change for FWFES students who feed into GPMS

## Elementary School Attendance Areas

- AA
- FWFES (proposed)
- PLES (proposed)
- Current ES boundary







## Projected Facility Utilization

	SY20	SY21	SY22	SY23	SY24	SY25
<b>AA</b>	<b>108%</b>	<b>105%</b>	<b>100%</b>	<b>100%</b>	<b>100%</b>	<b>100%</b>
FWFES	72%	78%	82%	84%	86%	91%
PLES**	102%	123%	147%	146%	143%	143%
OHMS	98%	103%	102%	103%	103%	106%

\*\*250 seat addition needed to accommodate enrollment; will be factored into the expansion of PLES using funding allocated in the CIP

### Advantages

- AA becomes true K-8
- Improves utilization of PLES and FWFES

### Challenges

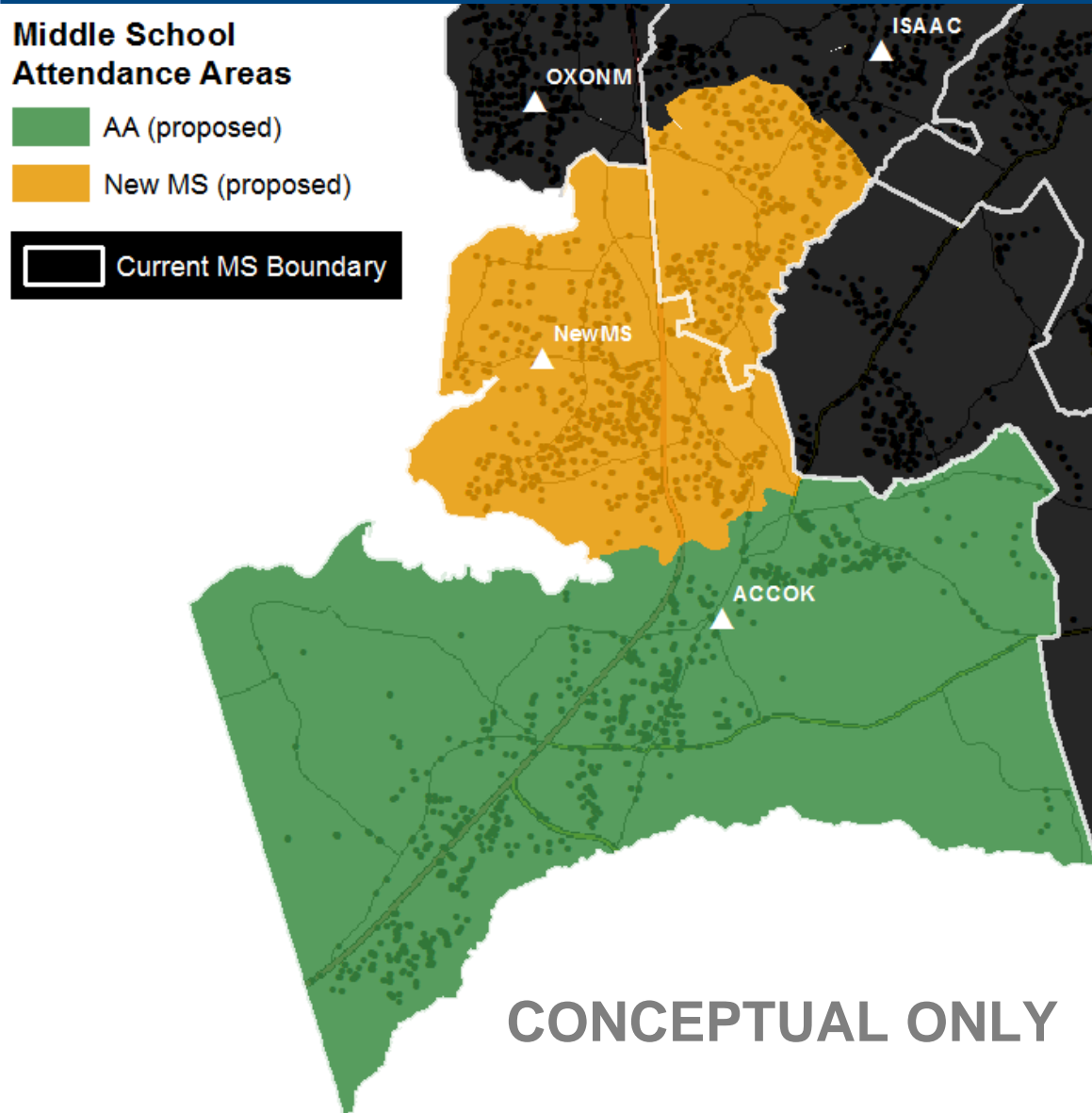
- Implementation cannot begin until fall 2020 due to transportation impacts
- AA has over 100% utilization through SY22
- Small 6<sup>th</sup> – 8<sup>th</sup> grade enrollment at PLES impacts course electives
- Small K-5 enrollment at PLES has staffing/ funding challenges
- No buses available to transport MS students from IQES who walk to OHMS
- Constructing large addition at PLES is difficult due to small site

## PGCPS Staff Recommendation

- **Build 600 seat middle school** in Fort Washington  
(pending funding)
- Middle school enrollment will come from PLES, FWFES and RVES

### Implementation

- Beginning **Sept 2019** and continuing until new MS is ready:
  - Keep rising 6<sup>th</sup> graders at PLES/ FWFES instead of sending to AA
    - No change for FWFES students who feed into GPMS
  - Continue serving 7<sup>th</sup> – 8<sup>th</sup> graders from PLES / FWFES at AA



## Projected Facility Utilization

### Projected Facility Utilization

	SY20	SY21	SY22	SY23	SY24	SY25
<b>AA</b>	<b>108%</b>	<b>111%</b>	<b>113%</b>	<b>107%</b>	<b>100%</b>	<b>100%</b>
FWFES	74%	76%	78%	70%	68%	70%
PLES	92%	87%	85%	71%	71%	75%
IGMS	75%	77%	77%	88%	89%	92%
OHMS	103%	113%	112%	105%	95%	90%
<b>New MS</b>				<b>30%</b>	<b>60%</b>	<b>90%</b>

preK-6 grade structure

### Advantages

- Implementation can begin fall 2019
- AA becomes true K-8
- Reduces over enrollment of OHMS
- Reduction in student enrollment for grade 6 at AA
- Additional Staff for PLES and FWFES to support additional elective course offering at grade 6

### Challenges

- AA has over 100% utilization through SY24
- PLES and FWFES remain under utilized
- Funding needed for new middle school

- Provide feedback to [capital.programs@pgcps.org](mailto:capital.programs@pgcps.org)
- April 25<sup>th</sup> – CEO recommendation to Board of Education
- April 30<sup>th</sup> – Public Hearing
- May 9<sup>th</sup> – Board action