



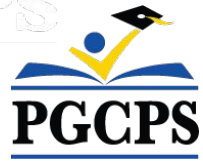
PGCPS . استخدم . طرح . جورول . مفاهمه . PGCPS



د تيمپلتن لومرني بنوونځي

د ټولني غونډه # 2 | د فبروري په 13، 2023، PM 6:30





زموږ ژمنه

PGCPS ژمن دی چې خپلو زده کونکو ، بنوونکو او ټولنو لپاره خوندي ، مدرن او دوامداره زده کړې چاپیریال وړاندې کولو لپاره ګړندي حرکت وکړي.



اجندا

د ټیم پیژندنه

تازه ډیزاین

کاری مهال ویش او لوژستیک

پوښتنې او ځوابونه

د ټيم پيژندنه

PGCPS

- جيسن واشنگټن ، د ملاتړ خدماتو مسول

آبي چاپ ښوونځی

- شاون مات لک، ريس

د تیم پیژندنه



Jeff Barr
PLENARY
Registered Representative

Hafeez Habib
PLENARY
Equity Members' Lead Project Manager

Brett Sullivan
PLENARY
Associate

Adam Dunn
PLENARY
Assistant Project Manager

Jeremy Ebie
PHOENIX
Equity Members' Project Manager

Rob Summers
PHOENIX
Operating Partner

Peter Bullen
ELLISDON CAPITAL
Senior Director



Bill Beschoner
MCN
Construction Process Executive in Charge

Bassem Boustany
MCN
Principal

Yonas Menji
MCN
Lead Construction Manager

Rick Munford
MCN
Preconstruction Director



Sean O'Donnell
PERKINS EASTMAN
Design Process Executive In Charge & Lead Architect

Omar Calderon
PERKINS EASTMAN
Design Principal



Pete Cambell
ELLISDON FS
Director, P3 Pursuits

Brandon Kelley
USE
Vice President

Johnathan Bolden
RSC
President



تازه ساحوی پلان

- د بس نه کاته کیدل
- د موټرو تم ځای
- بیرونی ټولگی او د لوبې ساحې



LEGEND	
①	Entry Plaza
②	Parking Lot
③	Bus Loop
④	Drop-Off
⑤	Play Lawn
⑥	Outdoor Classroom
⑦	Garden Plots
⑧	Pre-K/K Playground
⑨	Primary Playground
⑩	Paved Play
⑪	Monument Sign
⑫	Service Area
⑬	Undeveloped Easement for 57th Avenue
⑭	Temple Knolls Neighborhood Park (MNCPPC)
⑮	Proposed Hamlet Woods Subdivision

د موسمی کښت انتخاب

SPRING



WHITE AZALEA
Rhododendron x



HINO CRIMSON AZALEA
Rhododendron x



DAFFODIL
Narcissus x



DRIFT ROSE
Rosa hybrida

SUMMER



BUTTERFLY MILKWEED
Asclepias tuberosa



BLACK-EYED SUSAN
Rudbeckia fulgida



PENNSYLVANIA SEDGE
Carex pennsylvanica



SNIPPET WIEGELA
Wiegela florida



GOLDEN RAGWORT
Packera aurea



FOAM FLOWER
Tiarella cordifolia



GIANT ALLIUM
Allium Giganteum



ENGLISH LAUREL
Prunus laurocerasus



CORAL BELLS
Heuchera micrantha



FERN MIX
Multiple Species



KODIAK DIERVILLA
Diervilla x



BLUE CASCADE DISTYLIUM
Distylium x

AUTUMN



GROW LOW SUMAC
Rhus aromatica



ARKANSAS BLUE STAR
Amsonia hubrichtii



FEATHER REED GRASS
Calamagrostis x acutiflora

WINTER



PLUM YEW
Cephalotaxus harringtonia



WINTERBERRY
ilex verticillata



GREY OWL CEDAR
Juniperus virginiana



RED TWIG DOGWOOD
Cornus sericea



LITTLE BLUESTEM
Schizachyrium scoparium



SWEETPIRE
Itea virginica



SARGENT JUNIPER
Juniperus chinensis sargentii



FOTHERGILLA
Fothergilla gardenii



FOUNTAIN GRASS
Pennisetum alopecuroides



WINTER JASMIN
Jasmin nudiflorum



DRAGON LADY HOLLY
Ilex x aquipernyi



مقدماتی ساحوی پلان



د لومړی منزل پلان

• د ماشومتوب مرحلی لومړنی درجه ټولگی.

عمومي نونته

د ښوونځی زیره

مقدماتی ساحوی پلان

- د ماشومتوب مرحلې لومړنی درجه ټولگی.



د لاندې منزل پلان

مقدماتی ساحوی پلان

• د لوړو ټولگیو ټولگی



د دویمې درجې پلان

د داخلی لوړوالی او رینډرونه



نوی شوی لوړوالی او رینډرونه





Note: Design is subject to change

نوی شوی لوړوالی او رینډرونه



د کتنې مهال ویش

ساحوی تخریب پیل
8/15/2024



د ساحه کار پیل کول
11/1/2024

لوی ساختمان شروع
2/1/2025



د ودانې جوړول
9/1/2025



ساختمانی سیستمونه
10/1/2025



د پیل ودانې ختمول
3/1/2026



د AHJ وروستی تفتیشونه پیل کول
6/1/2026



د پروژې چمتووالی
7/15/2026



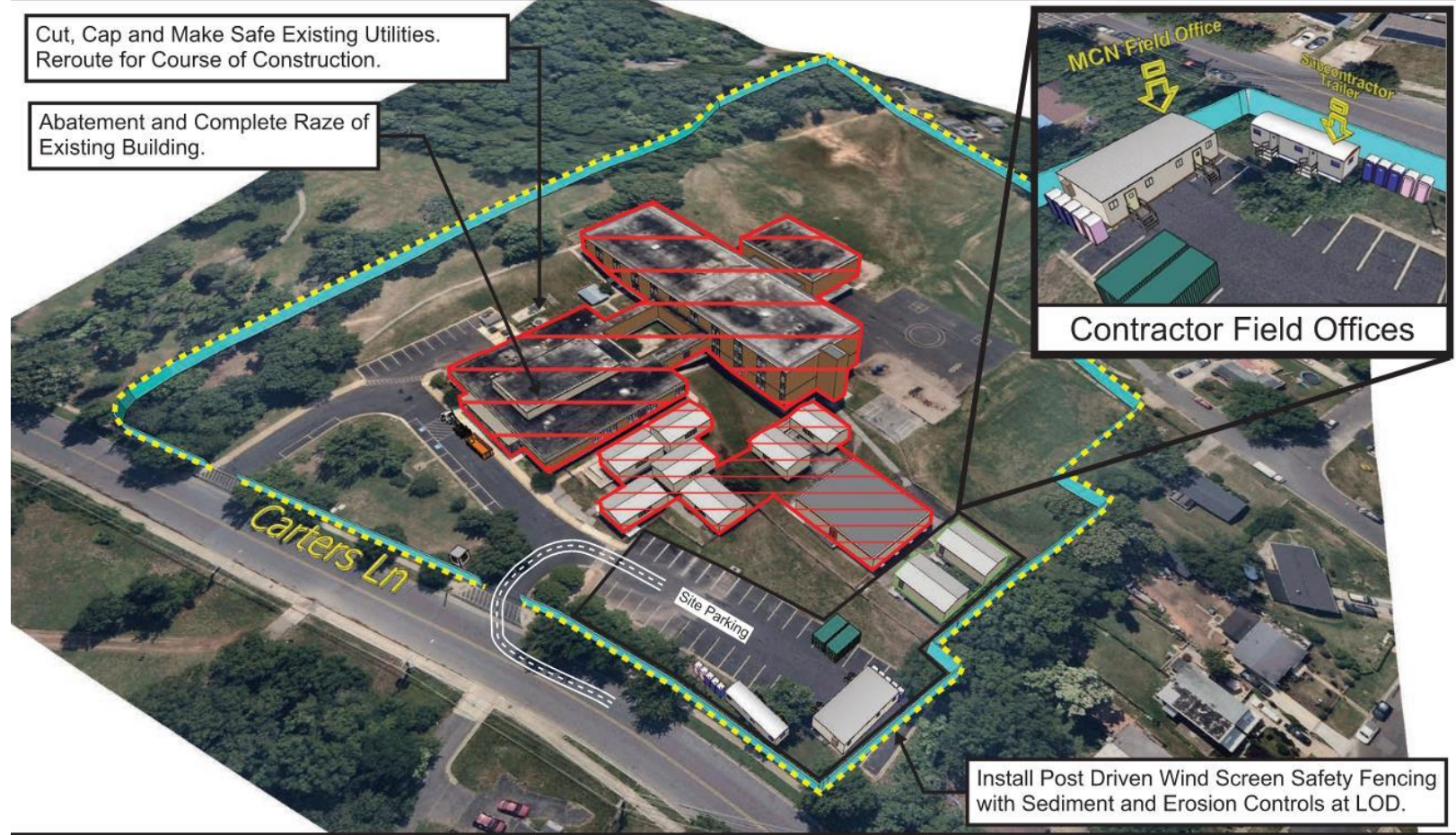
Templeton: New Building Logistic & Phasing Plan

Sequence 2 - Demolition & Rough Grading



September 2024 - February 2025

Page 1 of 3



Sequence 1 - Site Controls & LOD (Not Shown)
Sequence 2 - Demolition & Rough Grading
 Sequence 3 - Superstructure & Facade

-  : Dedicated Flaggers
-  : Vibration & Settlement Monitors

Before the demolition and rough grading process, MCN will establish control over the site by implementing safety fencing and sediment and erosion control systems. Existing utilities will be carefully identified, cut, capped, and made safe. They will then be rerouted and re-purposed as temporary utilities to support the construction activities.



NTS

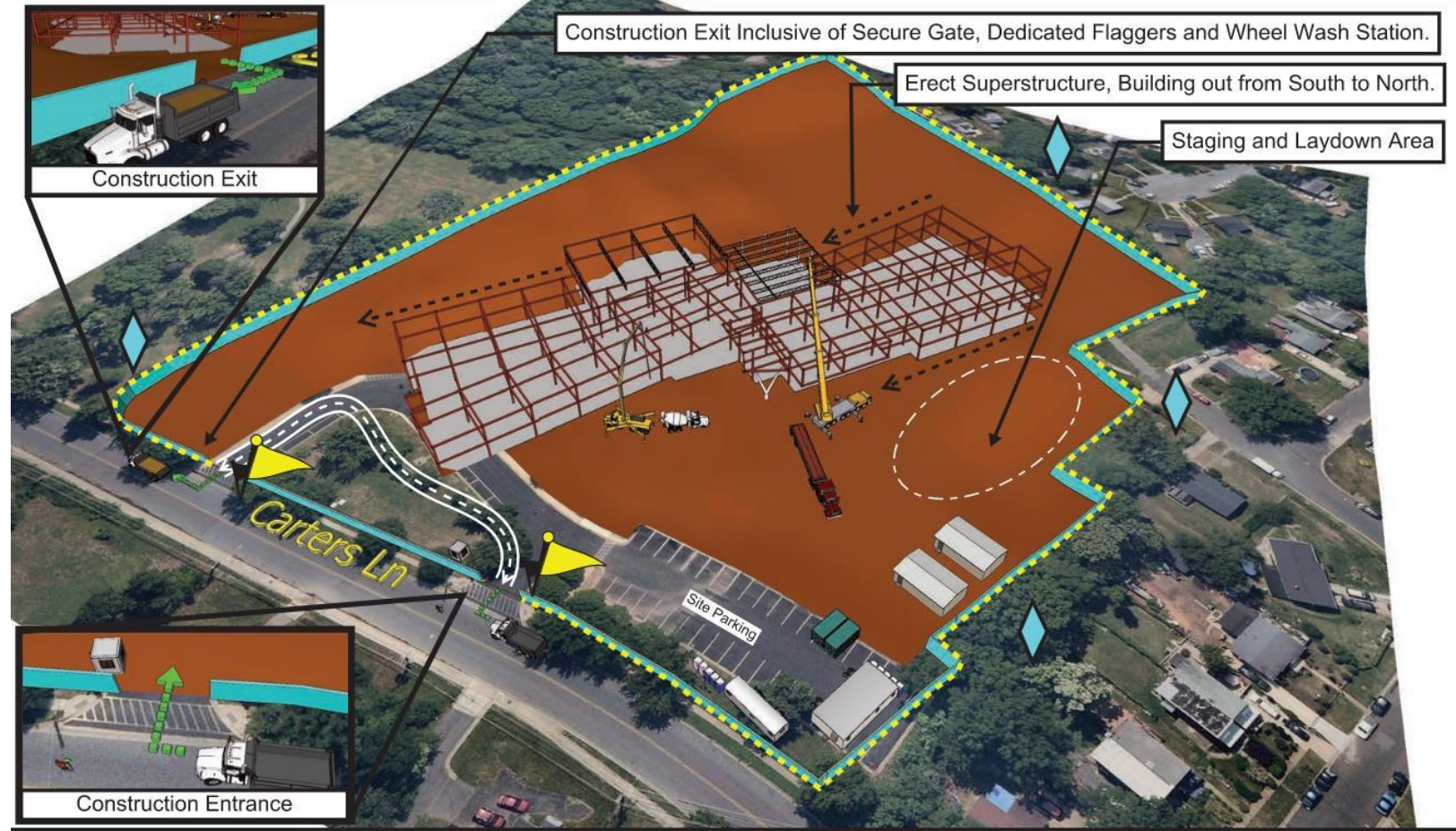
Templeton: New Building Logistic & Phasing Plan

Sequence 3 - Superstructure & Facade



February 2025 - July 2025

Page 2 of 3



Sequence 1 - Site Controls & LOD (Not Shown)
Sequence 2 - Demolition & Rough Grading
Sequence 3 - Superstructure & Facade

- : Dedicated Flaggers
- : Vibration & Settlement Monitors

The construction of the new school will take place in a location within the existing site that is free from any obstructions. It is expected that the construction activities will be situated at a sufficient distance from neighboring properties to avoid excessive vibration and noise disturbances.



TECHNICAL APPENDIX A-304

NTS

پوښتنې