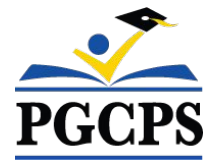




PGCPS . **ENGAGER . CONCEVOIR . CONSTRUIRE . COMMUNIQUER** . PGCPS



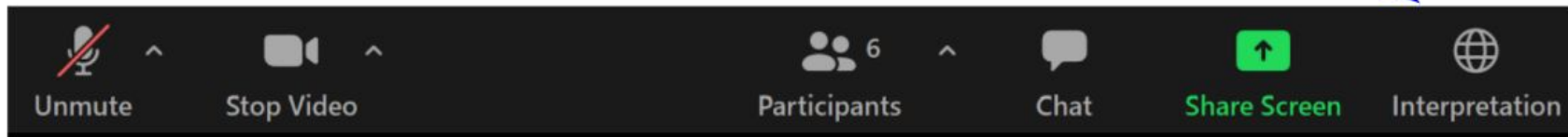
ÉCOLE PRIMAIRE SPRINGHILL LAKE

RÉUNION COMMUNAUTAIRE #1 | 7 MAI, 2024, 19h30



SERVICIOS DE INTERPRETACIÓN *INTERPRETING SERVICES*

La interpretación simultánea
está disponible en español.
*Simultaneous interpretation is
available in Spanish.*



SERVICIOS DE INTERPRETACIÓN

INTERPRETING SERVICES



On a computer-- At the bottom of the screen will be an interpretation globe. Click that globe and then select *Spanish*.

En una computadora-- En la parte baja de la pantalla habrá un globo de interpretación. Haga clic en ese globo y seleccione "Spanish."



On a mobile device-- At the bottom of the screen, tap the ellipses icon on the bottom right (...).

- Tap *Language Interpretation*.
- Tap *Spanish*.

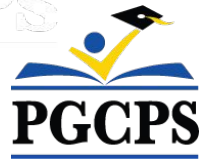
En un dispositivo móvil-- En la parte baja de la pantalla, toca el icono de elipses en la parte baja derecha (...).

- Toque *Language Interpretation*.
- Toque *Spanish*.



Votre opinion compte.

- Veuillez saisir vos questions/commentaires dans la partie des questions et réponses de Zoom.
- Les questions et les réponses de cette réunion publique seront publiées sur pgcpsblueprintschools.com.



Notre engagement

PGCPS agit promptement pour offrir des environnements d'apprentissage sûrs, modernes et durables à nos élèves, enseignants et communautés.



Agenda

- Présentations de l'équipe
- Conception
- Calendrier et Logistique de la construction
- Questions et Réponses



Présentations des équipes

PGCPS

- **Dr Niki Newman-Brown**, *Directeur pédagogique*
- **Dr Kasandra Lassiter**, *Surintendante adjointe*
- **Trena Wilson**, *Directrice*

Département des programmes d'investissement de PGCPS

- **Shawn Matlock**, *Directeur, Bureau de la planification et du développement des infrastructures alternatives*



Présentations des équipes



Jeff Barr
PLENARY
Registered Representative

Hafeez Habib
PLENARY
Equity Members' Lead Project Manager

Brett Sullivan
PLENARY
Associate

Adam Dunn
PLENARY
Assistant Project Manager

Jeremy Ebie
PHOENIX
Equity Members' Project Manager

Rob Summers
PHOENIX
Operating Partner

Peter Bullen
ELLISDON CAPITAL
Senior Director



Bill Beschoner
MCN
Construction Process Executive in Charge

Bassem Boustany
MCN
Principal

Yonas Menji
MCN
Lead Construction Manager

Rick Munford
MCN
Preconstruction Director



Sean O'Donnell
PERKINS EASTMAN
Design Process Executive In Charge & Lead Architect

Omar Calderon
PERKINS EASTMAN
Design Principal



Pete Cambell
ELLISDON FS
Director, P3 Pursuits

Brandon Kelley
USF
Vice President

Johnathan Bolden
RSC
President



Sharon Bradley
BSD
Le Directeur

Ivan Zapata
BSD
Directeur du génie civil

Matthew Cartledge
BSD
Chef de projet/ Architecte paysagiste

Jam Kendrick
TB&A
Responsable de projet



Plan du site proposé



MATERIALS LEGEND

- PROPERTY LINE
- CONCRETE
- ASPHALT
- RUBBER PLAY SURFACING
- LAWN
- PLANTING AREA
- EXISTING CANOPY TO REMAIN
- BIORETENTION; REFER CIVIL FOR DEPTH AND SPECIFICATIONS

* CONTRACTOR TO VERIFY THAT ALL QUANTITIES LISTED MATCH THE PLAN. NOTIFY LANDSCAPE ARCHITECT OF DISCREPANCIES.

Remarque : Le design est susceptible d'être modifié



Choix des plantes

SPRING



WHITE AZALEA
Rhododendron x



HINO CRIMSON AZALEA
Rhododendron x



DAFFODIL
Narcissus x



DRIFT ROSE
Rosa hybrida

SUMMER



BUTTERFLY MILKWEED
Asclepias tuberosa



BLACK-EYED SUSAN
Rudbeckia fulgida



PENNSYLVANIA SEDGE
Carex pennsylvanica



SNIPPET WIEGELA
Wiegela florida



GOLDEN RAGWORT
Packera aurea



FOAM FLOWER
Tiarella cordifolia



GIANT ALLIUM
Allium Giganteum



ENGLISH LAUREL
Prunus laurocerasus



CORAL BELLS
Heuchera micrantha



FERN MIX
Multiple Species



KODIAK DIERVILLA
Diervilla x



BLUE CASCADE DISTYLIUM
Distylium x

AUTUMN



GROW LOW SUMAC
Rhus aromatica



ARKANSAS BLUESTAR
Amsonia hubrichtii



FEATHER REED GRASS
Calamagrostis x acutiflora

WINTER



PLUM YEWE
Cephalotaxus harringtonia



WINTERBERRY
ilex verticillata



GREY OWL CEDAR
Juniperus virginiana



RED TWIG DOGWOOD
Cornus sericea



LITTLE BLUESTEM
Schizachyrium scoparium



SWEETPIRE
Itea virginica



SARGENT JUNIPER
Juniperus chinensis sargentii



FOTHERGILLA
Fothergilla gardenii



FOUNTAIN GRASS
Pennisetum alopecuroides



WINTER JASMIN
Jasmin nudiflorum



DRAGON LADY HOLLY
Ilex x aquipernyi

Remarque : Le design est susceptible d'être modifié



Images précédentes



Remarque : Le design est susceptible d'être modifié



Plan d'aménagement préliminaire

- Salles de classe pour la petite enfance au niveau scolaire.
- Entrée principale
- Au cœur de l'école



DEPARTMENT

- ACADEMIC - CORE
- ACADEMIC - EXTENDED
- ADMINISTRATION
- BUILDING SERVICES
- BUILDING SUPPORT
- CIRCULATION
- DINING
- MEDIA CENTER
- PERFORMING ARTS
- PHYSICAL EDUCATION
- SPECIAL EDUCATION
- SUPPORT
- VISUAL ARTS

Plan du premier niveau

Remarque : Le design est susceptible d'être modifié



Plan d'aménagement préliminaire

- Salles de classe de niveau supérieur

DEPARTMENT

- ACADEMIC - CORE
- ACADEMIC - EXTENDED
- ADMINISTRATION
- BUILDING SERVICES
- BUILDING SUPPORT
- CIRCULATION
- DINING
- MEDIA CENTER
- PERFORMING ARTS
- PHYSICAL EDUCATION
- SPECIAL EDUCATION
- SUPPORT
- VISUAL ARTS



Plan du deuxième niveau

Remarque : Le design est susceptible d'être modifié



Élévations et rendus intérieurs



Remarque : Le design est susceptible d'être modifié



Élévations et rendus intérieurs



Remarque : Le design est susceptible d'être modifié



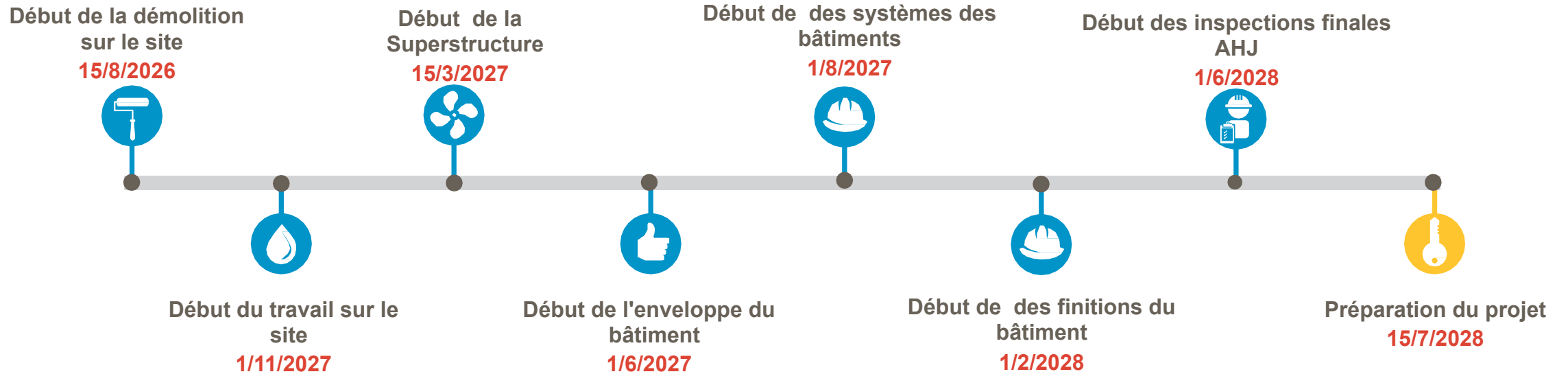
Élévations et rendus



Remarque : Le design est susceptible d'être modifié



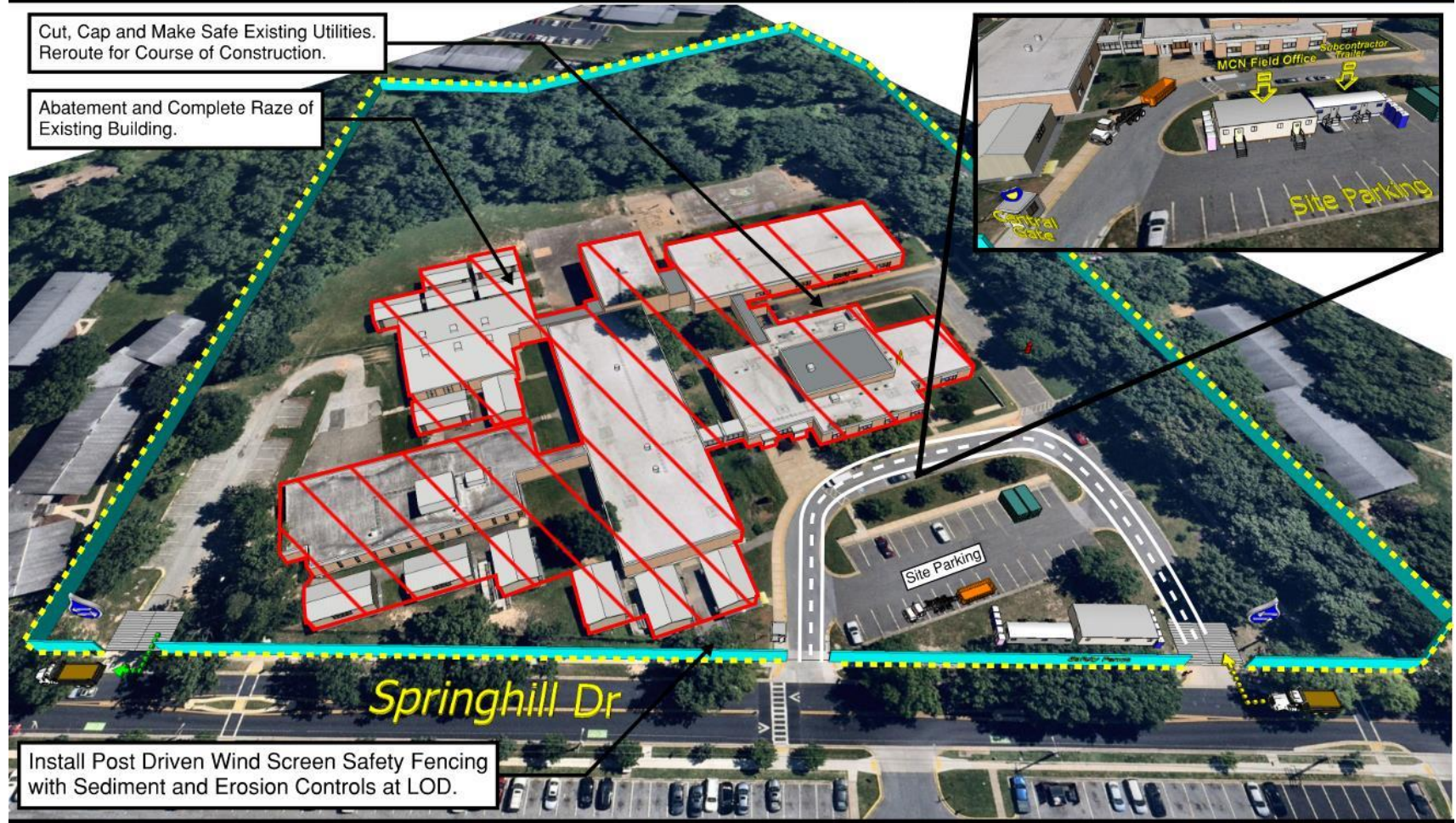
Aperçu du calendrier



Plan logistique

Springhill Lake ES: New Building Logistic & Phasing Plan

Sequence 2 - Demolition & Rough Grading



Sequence 1 - Site Controls & LOD (Not Shown)

Sequence 2 - Demolition & Rough Grading

Sequence 3 - Superstructure & Facade

Sequence 4 - Final Site & Completion

-  : Dedicated Flaggers
-  : Vibration & Settlement Monitors

Prior to initiating the demolition and rough grading process, MCN will take necessary steps to gain control over the site. This will involve the installation of safety fencing and the implementation of sediment and erosion control systems. The existing utilities will be meticulously identified, cut, capped, and secured to ensure safety. Subsequently, these utilities will be rerouted and repurposed as temporary resources to facilitate and support the ongoing construction activities.





Plan logistique

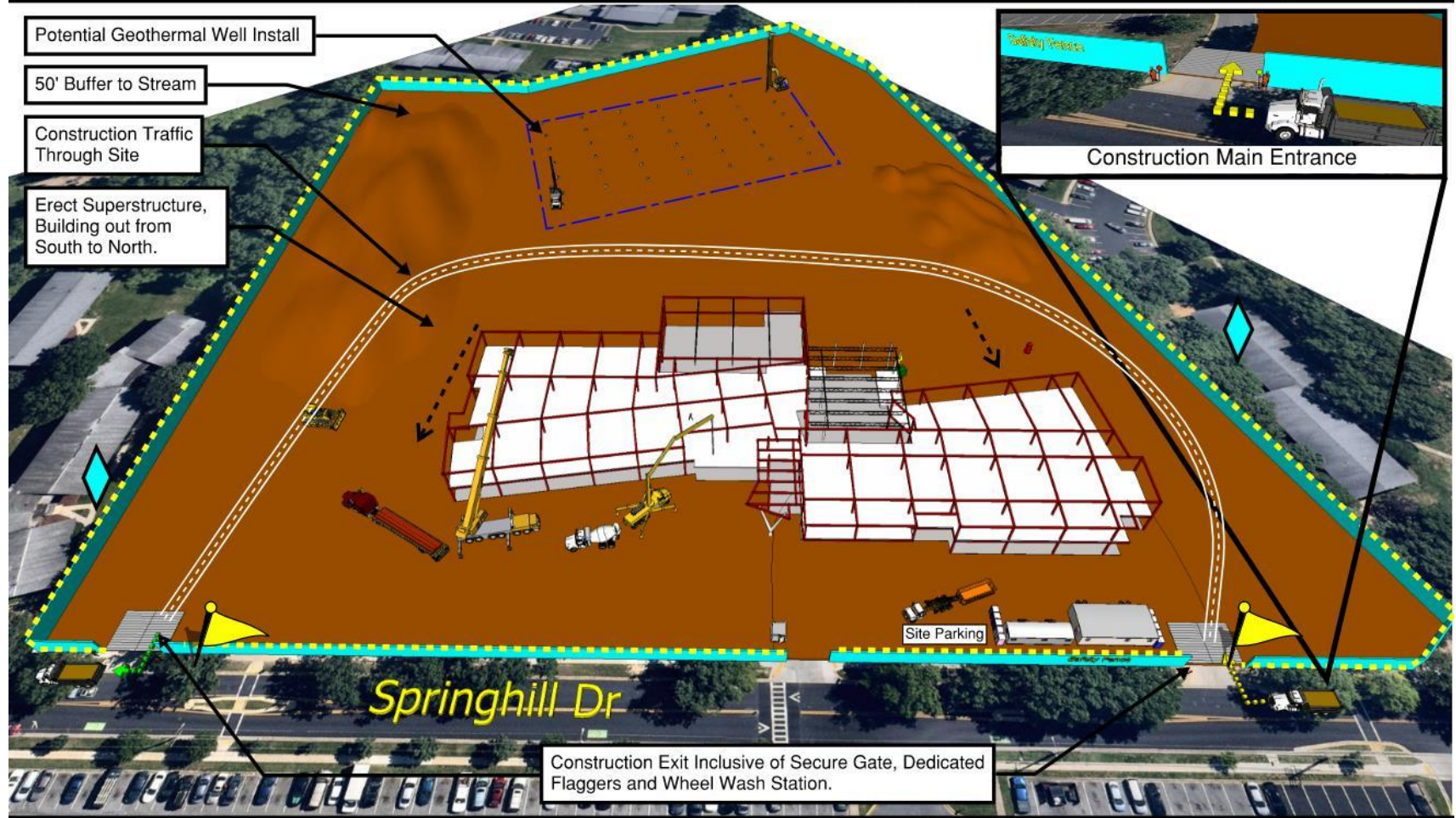
Springhill Lake ES: New Building Logistic & Phasing Plan

Sequence 3 - Superstructure & Facade



March 2027 - August 2027

Page 2 of 3



Sequence 1 - Site Controls & LOD (Not Shown)

Sequence 2 - Demolition & Rough Grading

Sequence 3 - Superstructure & Facade

Sequence 4 - Final Site & Completion

🚧 : Dedicated Flaggers

📍 : Vibration & Settlement Monitors

The construction and installation of the new school will be conducted in an unobstructed area within the existing site. Special attention will be given to ensure that the construction activities, including the potential geothermal well field, are situated at a significant distance from neighboring properties. This precaution is taken to prevent any excessive vibration and noise disturbances that could impact the surrounding area.

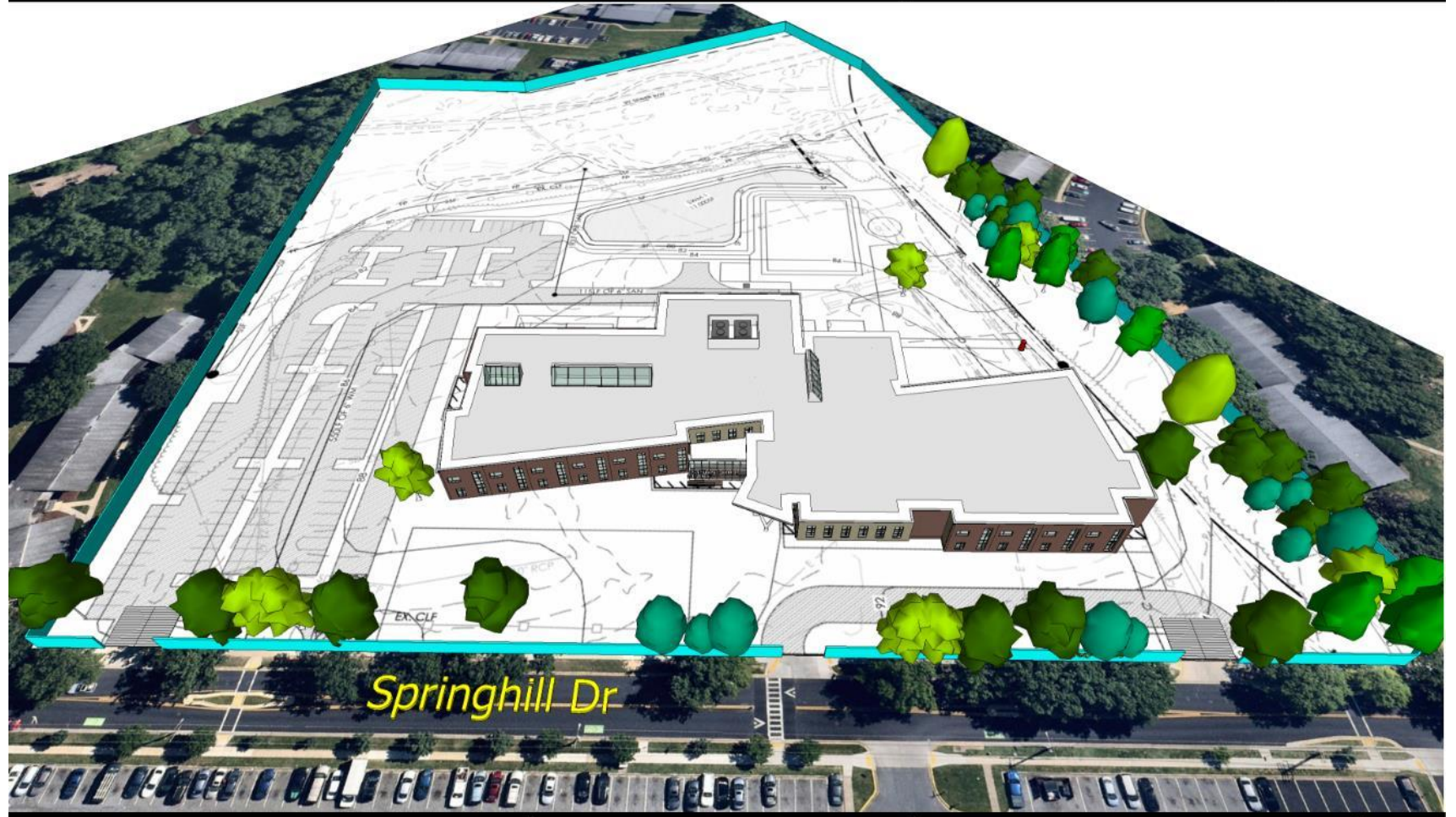


NTS

Plan logistique

Springhill Lake ES: New Building Logistic & Phasing Plan

Sequence 4 - Final Site & Completion



Sequence 1 - Site Controls & LOD (Not Shown)

Sequence 2 - Demolition & Rough Grading

Sequence 3 - Superstructure & Facade

Sequence 4 - Final Site & Completion

 : Dedicated Flaggers

 : Vibration & Settlement Monitors

Upon the completion of the superstructure, the interior construction will begin simultaneously with the site work. The aim is to synchronize and complete both the site work and the final construction of the interior building at the same time.



NTS

Des questions ?