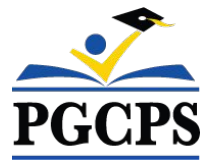




PGCPS . **ENGAGE . DESIGN . BUILD . COMMUNICATE** . PGCPS



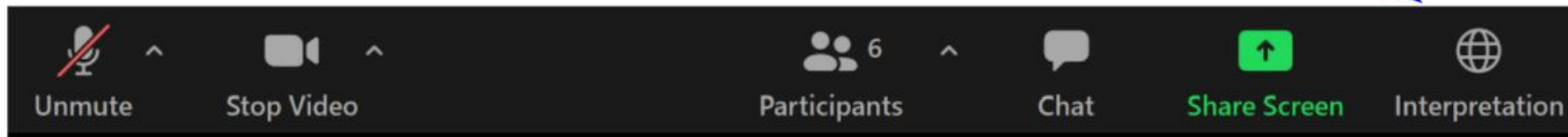
FAIRWOOD ELEMENTARY SCHOOL

COMMUNITY MEETING #1 | MAY 8, 2023, 6:00 PM



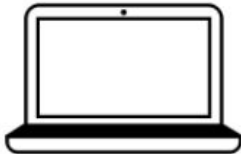
SERVICIOS DE INTERPRETACIÓN *INTERPRETING SERVICES*

La interpretación simultánea
está disponible en español.
*Simultaneous interpretation is
available in Spanish.*



SERVICIOS DE INTERPRETACIÓN

INTERPRETING SERVICES



On a computer-- At the bottom of the screen will be an interpretation globe. Click that globe and then select *Spanish*.

En una computadora-- En la parte baja de la pantalla habrá un globo de interpretación. Haga clic en ese globo y seleccione "Spanish."



On a mobile device-- At the bottom of the screen, tap the ellipses icon on the bottom right (...).

- Tap *Language Interpretation*.
- Tap *Spanish*.

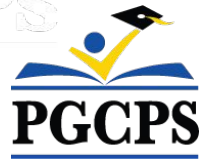
En un dispositivo móvil-- En la parte baja de la pantalla, toca el icono de elipses en la parte baja derecha (...).

- Toque *Language Interpretation*.
- Toque *Spanish*.



We value your input.

- Please type your questions/comments in the Q&A area of Zoom.
- Questions and answers from this town hall will be posted on pgcpsblueprintschools.com.



Our Commitment

PGCPS is committed to moving swiftly to deliver safe, state-of-the-art, and sustainable learning environments for our students, teachers, and communities.



Agenda

- Team Introductions
- Design
- Construction Schedule and Logistics
- Q&A



Team Introductions

PGCPS

- **Dr. LaTonya Williams**, *Instructional Director*
- **Dr. Kasandra Lassiter**, *Associate Superintendent*
- **Andrew Zanghi**, *Principal*

PGCPS, Department of Capital Programs

- **Shawn Matlock**, *Director, Office of Alternative Infrastructure, Planning and Development*



Team Introductions



Jeff Barr
PLENARY
Registered Representative

Hafeez Habib
PLENARY
Equity Members' Lead Project Manager

Brett Sullivan
PLENARY
Associate

Adam Dunn
PLENARY
Assistant Project Manager

Jeremy Ebie
PHOENIX
Equity Members' Project Manager

Rob Summers
PHOENIX
Operating Partner

Peter Bullen
ELLISDON CAPITAL
Senior Director



Bill Beschoner
MCN
Construction Process Executive in Charge

Bassem Boustany
MCN
Principal

Yonas Menji
MCN
Lead Construction Manager

Rick Munford
MCN
Preconstruction Director



Sean O'Donnell
PERKINS EASTMAN
Design Process Executive In Charge & Lead Architect

Omar Calderon
PERKINS EASTMAN
Design Principal



Pete Cambell
ELLISDON FS
Director, P3 Pursuits

Brandon Kelley
USF
Vice President

Johnathan Bolden
RSC
President



Sharon Bradley
BSD
Principal

Ivan Zapata
BSD
Director of Civil Engineering

Matthew Cartledge
BSD
Project Manager/ Landscape Architect



Jam Kendrick
TB&A
Project Manager

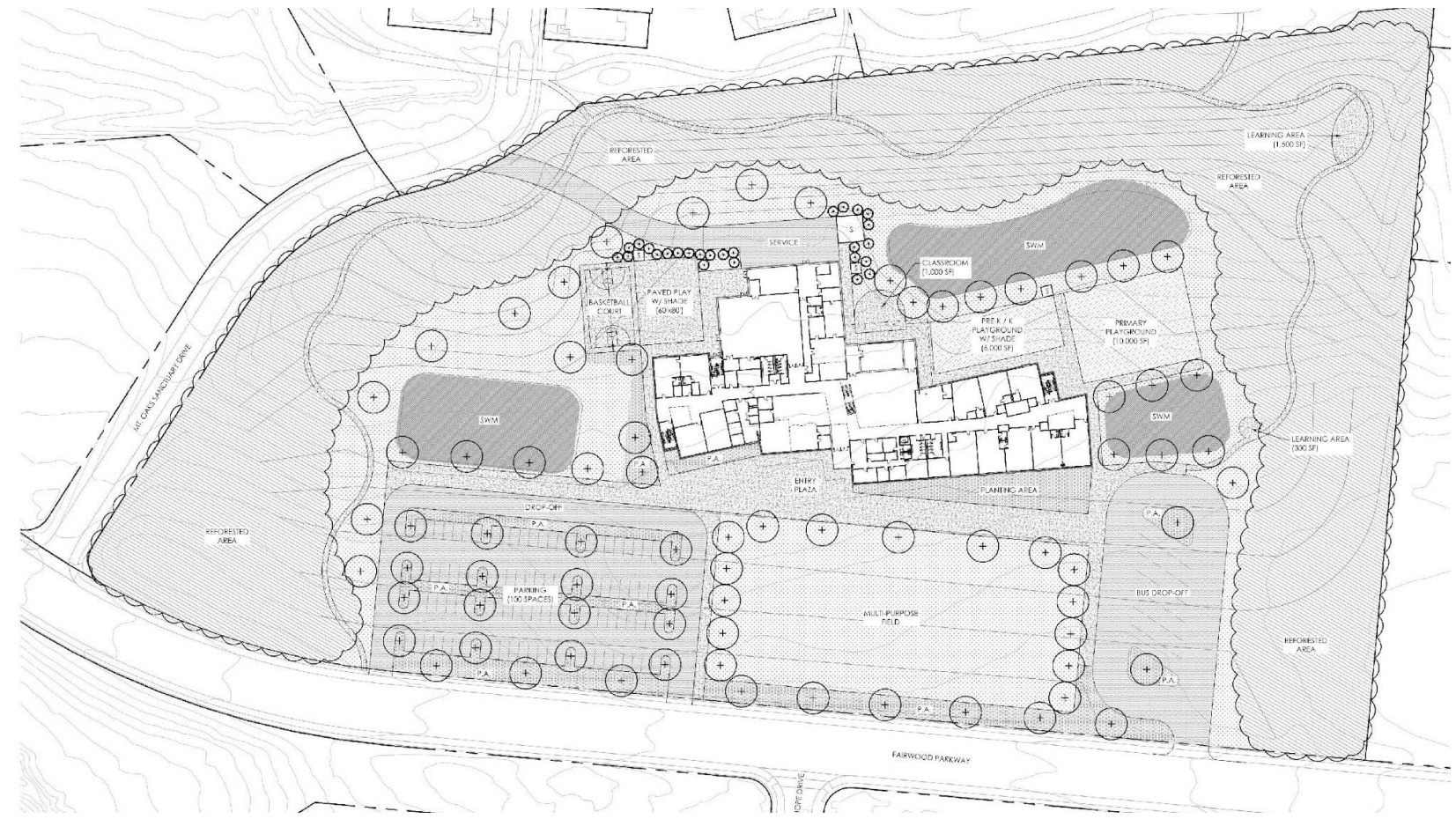


Proposed Site Plan

MATERIALS LEGEND

- PROPERTY LINE
- CONCRETE
- ASPHALT
- RUBBER PLAY SURFACING
- LAWN
- PLANTING AREA
- EXISTING CANOPY TO REMAIN
- BIORETENTION; REFER CIVIL FOR DEPTH AND SPECIFICATIONS

* CONTRACTOR TO VERIFY THAT ALL QUANTITIES LISTED MATCH THE PLAN. NOTIFY LANDSCAPE ARCHITECT OF DISCREPANCIES.





Seasonal Planting Selection

SPRING



WHITE AZALEA
Rhododendron x



HINO CRIMSON AZALEA
Rhododendron x



DAFFODIL
Narcissus x



DRIFT ROSE
Rosa hybrida

SUMMER



BUTTERFLY MILKWEED
Asclepias tuberosa



BLACK-EYED SUSAN
Rudbeckia fulgida



PENNSYLVANIA SEDGE
Carex pennsylvanica



SNIPPET WIEGELA
Wiegela florida



GOLDEN RAGWORT
Packera aurea



FOAM FLOWER
Tiarella cordifolia



GIANT ALLIUM
Allium Giganteum



ENGLISH LAUREL
Prunus laurocerasus



CORAL BELLS
Heuchera micrantha



FERN MIX
Multiple Species



KODIAK DIERVILLA
Diervilla x



BLUE CASCADE DISTYLIUM
Distylium x

AUTUMN



GROW LOW SUMAC
Rhus aromatica



ARKANSAS BLUESTAR
Amsonia hubrichtii



FEATHER REED GRASS
Calamagrostis x acutiflora

WINTER



PLUM YEW
Cephalotaxus harringtonia



WINTERBERRY
Ilex verticillata



GREY OWL CEDAR
Juniperus virginiana



RED TWIG DOGWOOD
Cornus sericea



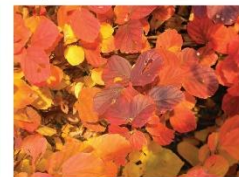
LITTLE BLUESTEM
Schizachyrium scoparium



SWEETPIRE
Itea virginica



SARGENT JUNIPER
Juniperus chinensis sargentii



FOTHERGILLA
Fothergilla gardenii



FOUNTAIN GRASS
Pennisetum alopecuroides



WINTER JASMIN
Jasmin nudiflorum



DRAGON LADY HOLLY
Ilex x aquipernyi



Precedent Images





Preliminary Layout Plan

- Early childhood classrooms at grade
- Main entrance
- Heart of the School

DEPARTMENT

- ACADEMIC - CORE
- ACADEMIC - EXTENDED
- ADMINISTRATION
- BUILDING SERVICES
- BUILDING SUPPORT
- CIRCULATION
- DINING
- MEDIA CENTER
- PERFORMING ARTS
- PHYSICAL EDUCATION
- SPECIAL EDUCATION
- SUPPORT
- VISUAL ARTS





Preliminary Layout Plan

- Upper grade classrooms

DEPARTMENT

	ACADEMIC - CORE
	ACADEMIC - EXTENDED
	ADMINISTRATION
	BUILDING SERVICES
	BUILDING SUPPORT
	CIRCULATION
	DINING
	MEDIA CENTER
	PERF ARTS
	PHYS ED
	SPEC ED
	SUPPORT
	VISUAL ARTS



Note: Design is subject to change



Interior Elevations and Renderings





Elevations and Renderings



Note: Design is subject to change



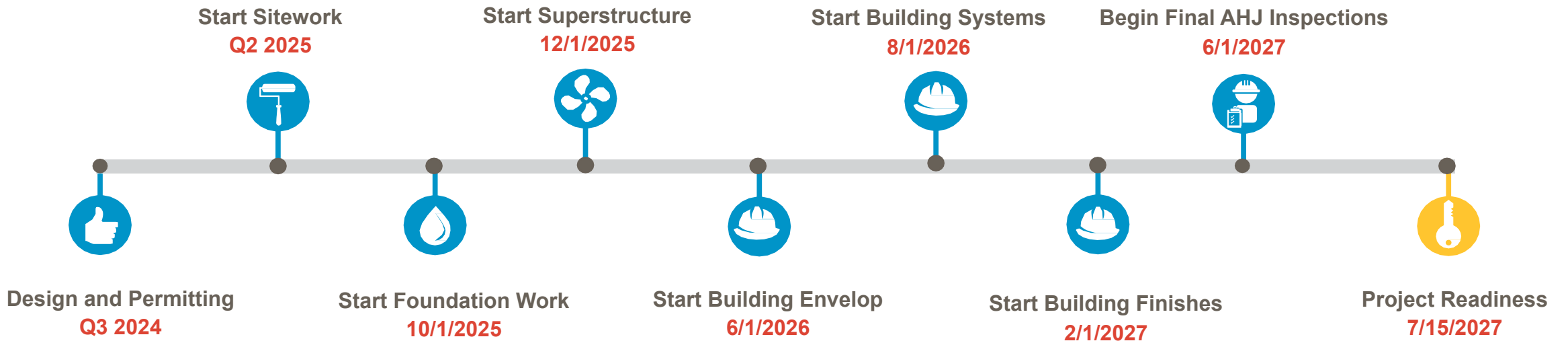
Elevations and Renderings



Note: Design is subject to change



Schedule Overview

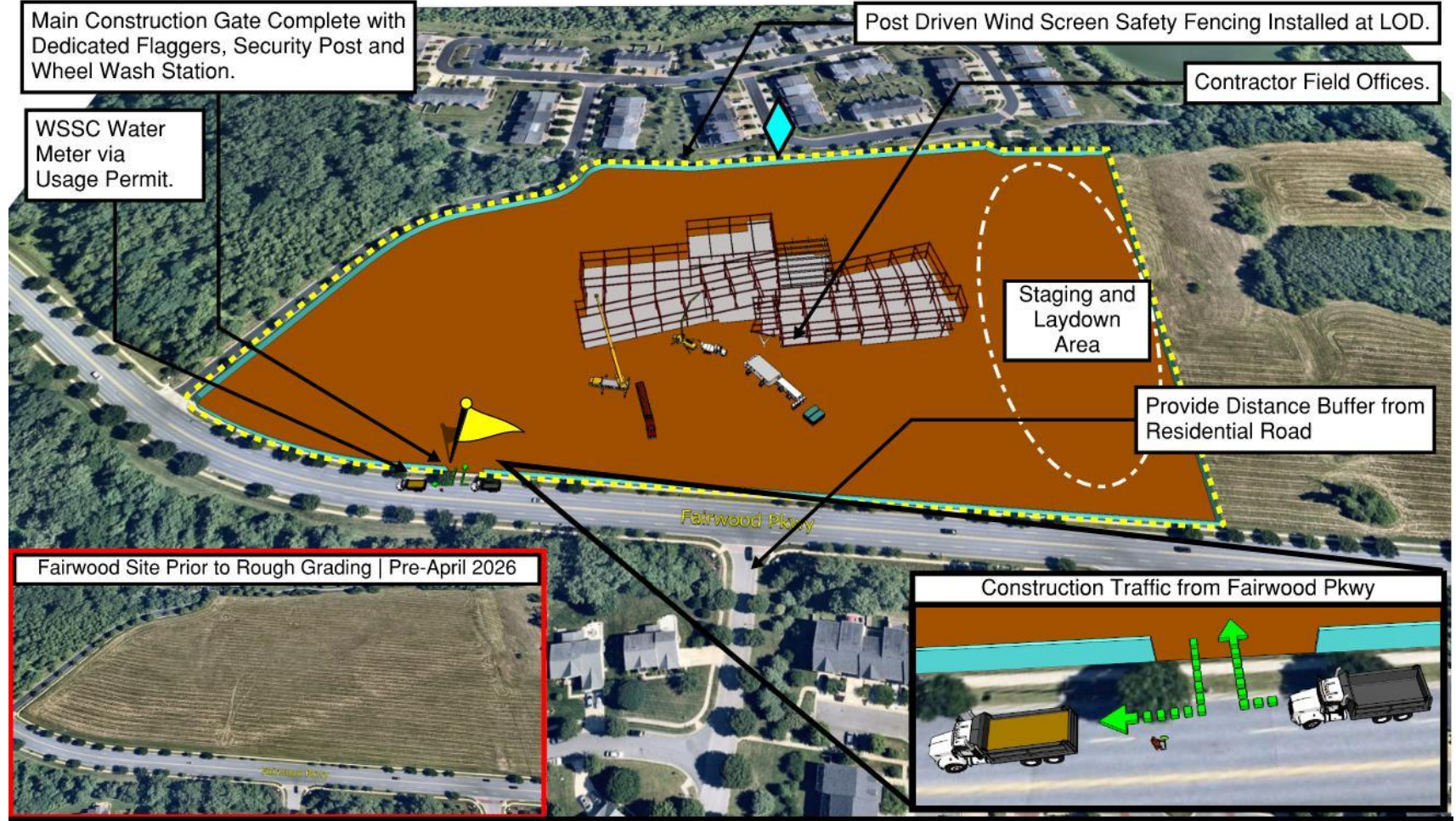




Logistics Plan

Fairwood: New Building Logistic & Phasing Plans

Sequence 3 - Superstructure & Facade



- Sequence 1 - Site Controls & LOD
- Sequence 2 - Rough Grading
- Sequence 3 - Superstructure & Facade**
- Sequence 4 - Final Site & Completion

- : Dedicated Flaggers
- : Vibration & Settlement Monitors

At this stage of the construction process, the site has undergone thorough clearing and grading procedures. The extensive size of the site ensures that construction is anticipated to proceed smoothly, as there are only a few restrictions or limitations in place.





Logistics Plan

Fairwood: New Building Logistic & Phasing Plans

Sequence 4 - Final Site & Completion



- Sequence 1 - Site Controls & LOD
- Sequence 2 - Rough Grading
- Sequence 3 - Superstructure & Facade
- Sequence 4 - Final Site & Completion**

-  : Dedicated Flaggers
-  : Vibration & Settlement Monitors

Once the superstructure is finished, the interior construction will commence in parallel with the site work. It is expected that both the site work and the final completion of the interior building will be synchronized and finished simultaneously.





Questions?