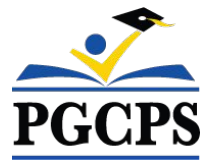




PGCPS . **ENGAGE . DESIGN . BUILD . COMMUNICATE** . PGCPS



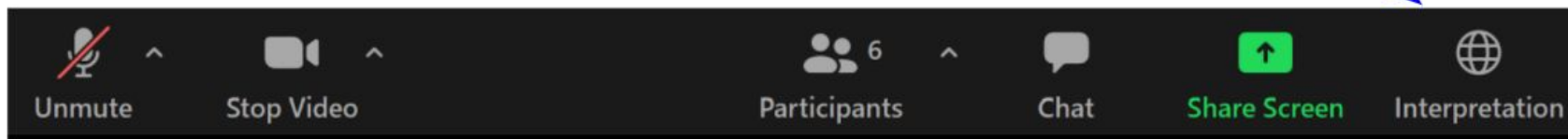
DUCKWORTH ELEMENTARY SCHOOL

COMMUNITY MEETING #1 | MAY 15, 2023, 7:30 PM



SERVICIOS DE INTERPRETACIÓN *INTERPRETING SERVICES*

La interpretación simultánea
está disponible en español.
*Simultaneous interpretation is
available in Spanish.*



SERVICIOS DE INTERPRETACIÓN

INTERPRETING SERVICES



On a computer-- At the bottom of the screen will be an interpretation globe. Click that globe and then select *Spanish*.

En una computadora-- En la parte baja de la pantalla habrá un globo de interpretación. Haga clic en ese globo y seleccione "Spanish."



On a mobile device-- At the bottom of the screen, tap the ellipses icon on the bottom right (...).

- Tap *Language Interpretation*.
- Tap *Spanish*.

En un dispositivo móvil-- En la parte baja de la pantalla, toca el icono de elipses en la parte baja derecha (...).

- Toque *Language Interpretation*.
- Toque *Spanish*.



We value your input.

- Please type your questions/comments in the Q&A area of Zoom.
- Questions and answers from this town hall will be posted on pgcpsblueprintschools.com.



Our Commitment

PGCPS is committed to moving swiftly to deliver safe, state-of-the-art, and sustainable learning environments for our students, teachers, and communities.



Agenda

- Team Introductions
- Design
- Construction Schedule and Logistics
- Q&A



Team Introductions

PGCPS

- **Dr. Janice Briscoe**, *Instructional Director*
- **Dr. Carletta Marrow**, *Associate Superintendent*
- **Dr. Selena Swilling**, *Principal (James E Duckworth)*

PGCPS, Department of Capital Programs

- **Shawn Matlock**, *Director, Office of Alternative Infrastructure, Planning and Development*



Team Introductions



Jeff Barr PLENARY Registered Representative	Hafeez Habib PLENARY Equity Members' Lead Project Manager	Brett Sullivan PLENARY Associate	Adam Dunn PLENARY Assistant Project Manager	Jeremy Ebie PHOENIX Equity Members' Project Manager	Rob Summers PHOENIX Operating Partner	Peter Bullen ELLISDON CAPITAL Senior Director
----------------------------------------------------------	------------------------------------------------------------------------	-----------------------------------------------	----------------------------------------------------------	------------------------------------------------------------------	----------------------------------------------------	------------------------------------------------------------



Bill Beschoner MCN Construction Process Executive in Charge	Bassem Boustany MCN Principal	Yonas Menji MCN Lead Construction Manager	Rick Munford MCN Preconstruction Director
--------------------------------------------------------------------------	--------------------------------------------	--------------------------------------------------------	--------------------------------------------------------



Sean O'Donnell PERKINS EASTMAN Design Process Executive In Charge & Lead Architect	Omar Calderon PERKINS EASTMAN Design Principal
-------------------------------------------------------------------------------------------------	-------------------------------------------------------------



Pete Cambell ELLISDON FS Director, P3 Pursuits	Brandon Kelley USE Vice President	Johnathan Bolden RSC President
-------------------------------------------------------------	------------------------------------------------	---------------------------------------------



Sharon Bradley BSD Principal	Ivan Zapata BSD Director of Civil Engineering	Matthew Cartledge BSD Project Manager/ Landscape Architect
-------------------------------------------	------------------------------------------------------------	-------------------------------------------------------------------------



Jam Kendrick
TB&A
Project Manager



Proposed Site Plan

MATERIALS LEGEND

	PROPERTY LINE
	CONCRETE
	ASPHALT
	RUBBER PLAY SURFACING
	LAWN
	PLANTING AREA
	EXISTING CANOPY TO REMAIN
	BIORETENTION; REFER CIVIL FOR DEPTH AND SPECIFICATIONS



Note: Design is subject to change



Seasonal Planting Selection

SPRING



WHITE AZALEA
Rhododendron x



HINO CRIMSON AZALEA
Rhododendron x



DAFFODIL
Narcissus x



DRIFT ROSE
Rosa hybrida

SUMMER



BUTTERFLY MILKWEED
Asclepias tuberosa



BLACK-EYED SUSAN
Rudbeckia fulgida



PENNSYLVANIA SEDGE
Carex pennsylvanica



SNIPPET WIEGELA
Wiegela florida



GOLDEN RAGWORT
Packera aurea



FOAM FLOWER
Tiarella cordifolia



GIANT ALLIUM
Allium Giganteum



ENGLISH LAUREL
Prunus laurocerasus



CORAL BELLS
Heuchera micrantha



FERN MIX
Multiple Species



KODIAK DIERVILLA
Diervilla x



BLUE CASCADE DISTYLIUM
Distylium x

AUTUMN



GROW LOW SUMAC
Rhus aromatica



ARKANSAS BLUE STAR
Amsonia hubrichtii



FEATHER REED GRASS
Calamagrostis x acutiflora

WINTER



PLUM YEW
Cephalotaxus harringtonia



WINTERBERRY
ilex verticillata



GREY OWL CEDAR
Juniperus virginiana



RED TWIG DOGWOOD
Cornus sericea



LITTLE BLUESTEM
Schizachyrium scoparium



SWEETPIRE
Itea virginica



SARGENT JUNIPER
Juniperus chinensis sargentii



FOTHERGILLA
Fothergilla gardenii



FOUNTAIN GRASS
Pennisetum alopecuroides



WINTER JASMIN
Jasmin nudiflorum



DRAGON LADY HOLLY
Ilex x aquipernyi



Precedent Images





Preliminary Layout Plan

- Early childhood classrooms at grade
- Main entrance
- Heart of the School

DEPARTMENT

- ACADEMIC - CORE
- ACADEMIC - EXTENDED
- ADMINISTRATION
- BUILDING SERVICES
- BUILDING SUPPORT
- CIRCULATION
- DINING
- MEDIA CENTER
- PERFORMING ARTS
- PHYSICAL EDUCATION
- SPECIAL EDUCATION
- SUPPORT
- VISUAL ARTS





Preliminary Layout Plan

- Upper grade classrooms

DEPARTMENT

	ACADEMIC - CORE
	ACADEMIC - EXTENDED
	ADMINISTRATION
	BUILDING SERVICES
	BUILDING SUPPORT
	CIRCULATION
	DINING
	MEDIA CENTER
	PERF ARTS
	PHYS ED
	SPEC ED
	SUPPORT
	VISUAL ARTS



Note: Design is subject to change



Interior Elevations and Renderings





Elevations and Renderings



Note: Design is subject to change



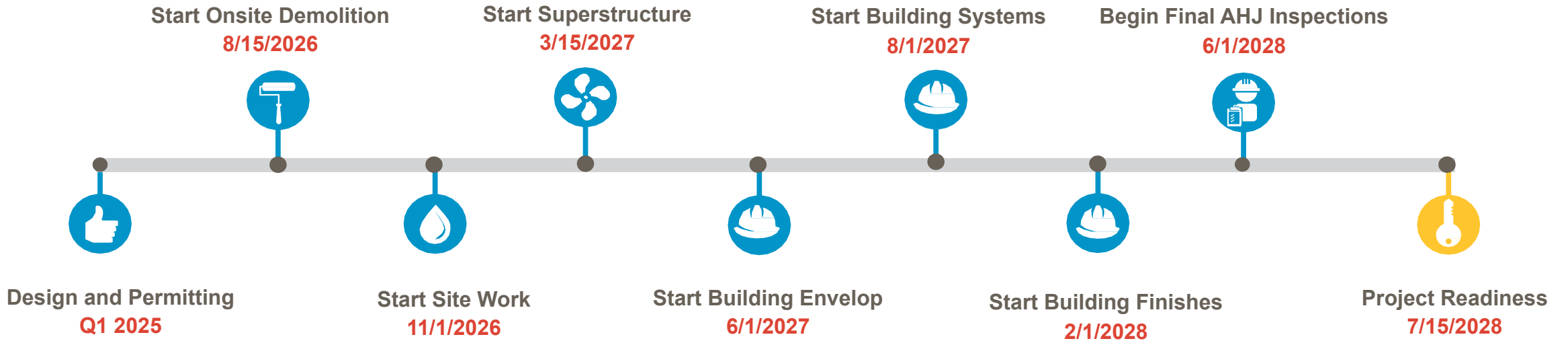
Elevations and Renderings



Note: Design is subject to change



Schedule Overview

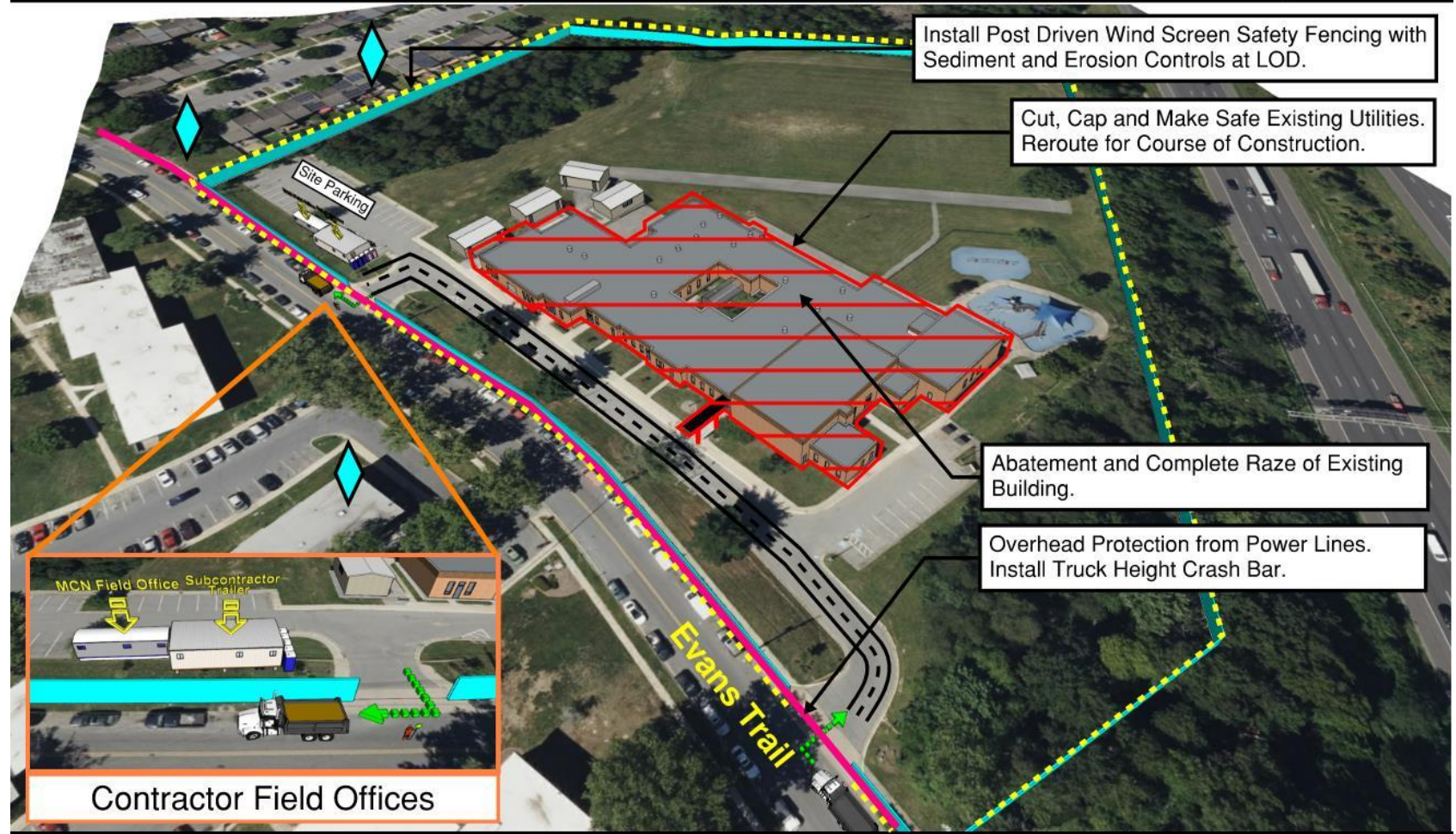




Logistics Plan

James E. Duckworth ES: New Building Logistic & Phasing Plan

Sequence 2 - Demolition & Rough Grading



Sequence 1 - Site Controls & LOD (Not Shown)
Sequence 2 - Demolition & Rough Grading
 Sequence 3 - Superstructure & Facade
 Sequence 4 - Final Site & Completion

- : Dedicated Flaggers
- : Vibration & Settlement Monitors

Prior to the demolition and rough grading process, MCN will take necessary measures to secure the site by installing safety fencing and implementing sediment and erosion control systems. The existing utilities will undergo a meticulous identification process and be safely cut, capped, and secured. These utilities will be rerouted and repurposed as temporary facilities to facilitate the construction activities.



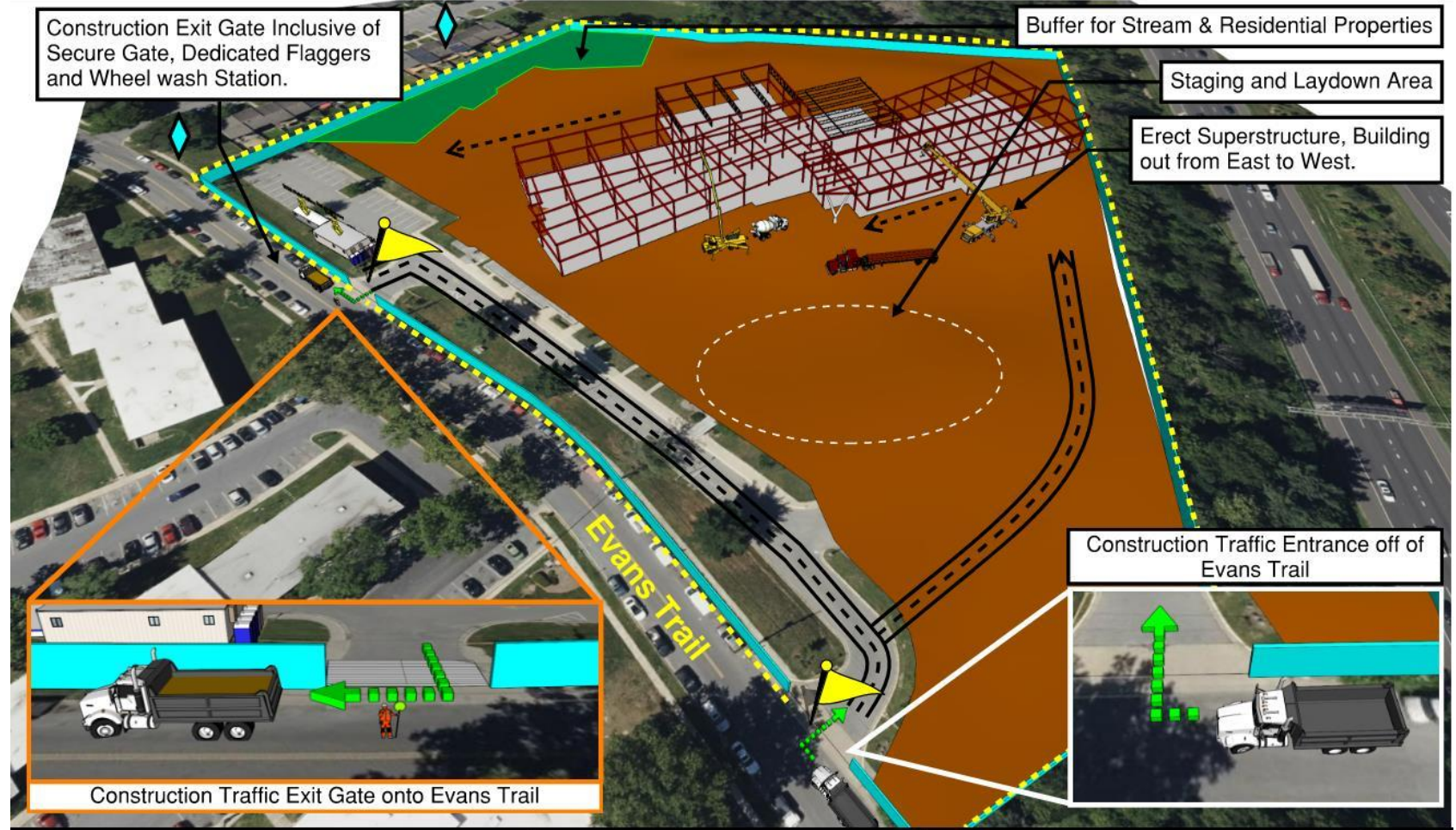


Logistics Plan

James E. Duckworth ES: New Building Logistic & Phasing Plan



Sequence 3 - Superstructure & Facade



- Sequence 1 - Site Controls & LOD (Not Shown)
- Sequence 2 - Demolition & Rough Grading
- Sequence 3 - Superstructure & Facade**
- Sequence 4 - Final Site & Completion

- : Dedicated Flaggers
- : Vibration & Settlement Monitors

The new school will be constructed in an unobstructed area within the existing site. The construction activities will be carefully situated at an ample distance from neighboring properties, ensuring that excessive vibration and noise disturbances are prevented during the process.



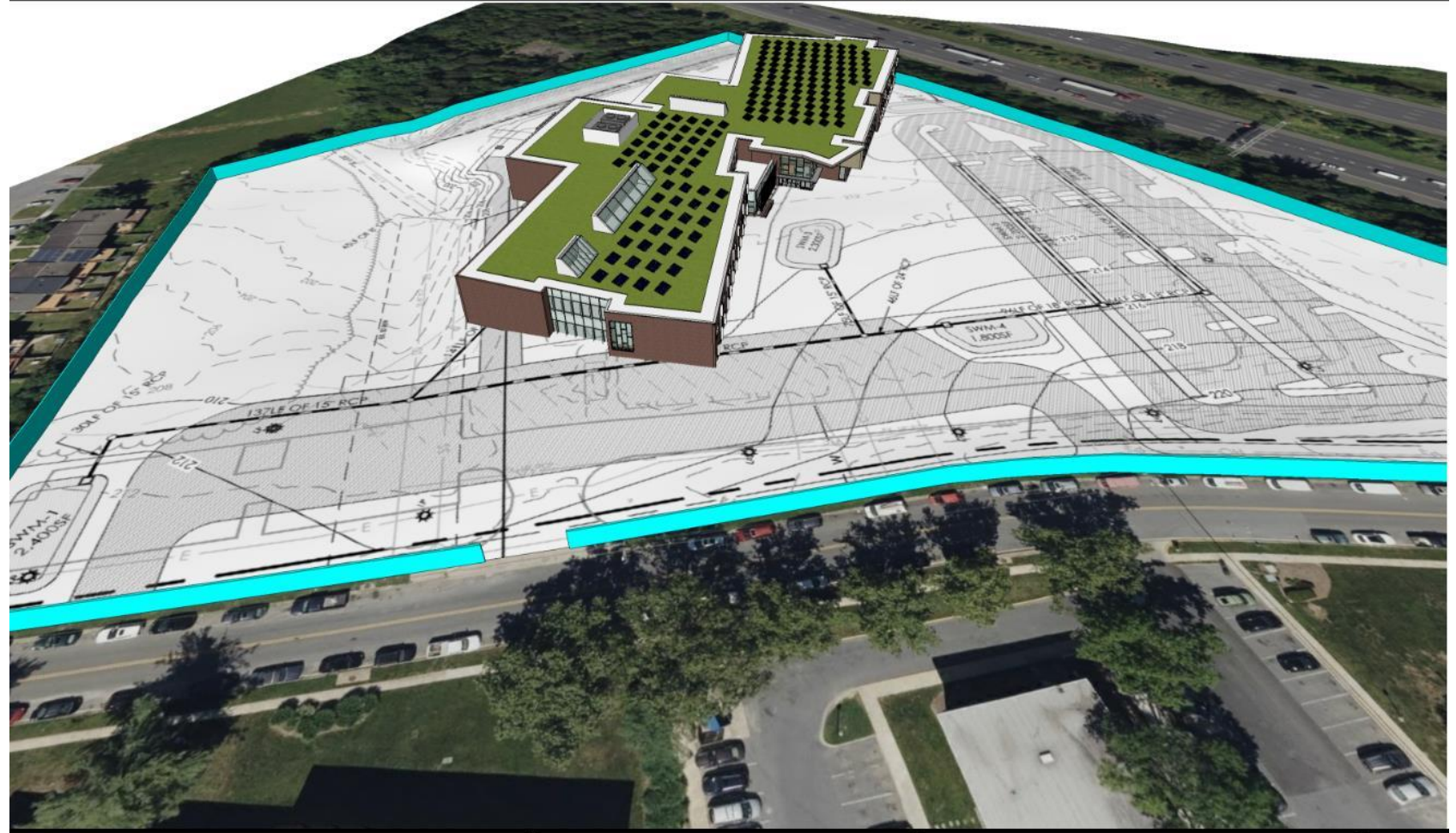
NTS



Logistics Plan

James E. Duckworth ES: New Building Logistic & Phasing Plan

Sequence 4 - Final Site & Completion



Sequence 1 - Site Controls & LOD (Not Shown)
 Sequence 2 - Demolition & Rough Grading
 Sequence 3 - Superstructure & Facade
Sequence 4 - Final Site & Completion

-  : Dedicated Flaggers
-  : Vibration & Settlement Monitors

Upon the completion of the superstructure, the interior construction will begin simultaneously with the site work and the final completion of the interior building will be meticulously coordinated and concluded concurrently.





Questions?