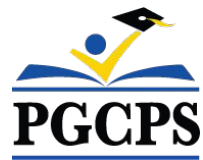




PGCPS . **ENGAGE . DESIGN . BUILD . COMMUNICATE** . PGCPS



BRANDYWINE K-8 SCHOOL

COMMUNITY MEETING #1 | MAY 7, 2023, 6:00 PM



SERVICIOS DE INTERPRETACIÓN *INTERPRETING SERVICES*

La interpretación simultánea
está disponible en español.
*Simultaneous interpretation is
available in Spanish.*



SERVICIOS DE INTERPRETACIÓN

INTERPRETING SERVICES



On a computer-- At the bottom of the screen will be an interpretation globe. Click that globe and then select *Spanish*.

En una computadora-- En la parte baja de la pantalla habrá un globo de interpretación. Haga clic en ese globo y seleccione "Spanish."



On a mobile device-- At the bottom of the screen, tap the ellipses icon on the bottom right (...).

- Tap *Language Interpretation*.
- Tap *Spanish*.

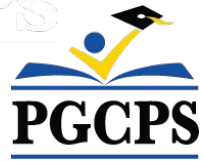
En un dispositivo móvil-- En la parte baja de la pantalla, toca el icono de elipses en la parte baja derecha (...).

- Toque *Language Interpretation*.
- Toque *Spanish*.



We value your input.

- Please type your questions/comments in the Q&A area of Zoom.
- Questions and answers from this town hall will be posted on pgcpsblueprintschools.com.



Our Commitment

PGCPS is committed to moving swiftly to deliver safe, state-of-the-art, and sustainable learning environments for our students, teachers, and communities.



Agenda

- Team Introductions
- Design
- Construction Schedule and Logistics
- Q&A



Team Introductions

PGCPS

- **Dr. Kristil Fossett**, *Instructional Director*
- **Darryl Evans**, *Instructional Director*
- **Unique Hunter-Blake**, *Principal, Brandywine Elementary School*
- **Terrill Hall**, *Principal, Gwynn Park Middle School*
- **Antron Huff**, *Principal, Baden Elementary School*

PGCPS, Department of Capital Programs

- **Shawn Matlock**, *Director, Office of Alternative Infrastructure, Planning and Development*



Team Introductions



Jeff Barr
PLENARY
Registered Representative

Hafeez Habib
PLENARY
Equity Members' Lead Project Manager

Brett Sullivan
PLENARY
Associate

Adam Dunn
PLENARY
Assistant Project Manager

Jeremy Ebie
PHOENIX
Equity Members' Project Manager

Rob Summers
PHOENIX
Operating Partner

Peter Bullen
ELLISDON CAPITAL
Senior Director



Bill Beschorner
MCN
Construction Process Executive in Charge

Bassem Boustany
MCN
Principal

Yonas Menji
MCN
Lead Construction Manager

Rick Munford
MCN
Preconstruction Director



Sean O'Donnell
PERKINS EASTMAN
Design Process Executive In Charge & Lead Architect

Omar Calderon
PERKINS EASTMAN
Design Principal



Pete Cambell
ELLISDON FS
Director, P3 Pursuits

Brandon Kelley
USF
Vice President

Johnathan Bolden
RSC
President



Mamo Assefa
Delon Hampton
President

James Gittens
Delon Hampton
Vice President

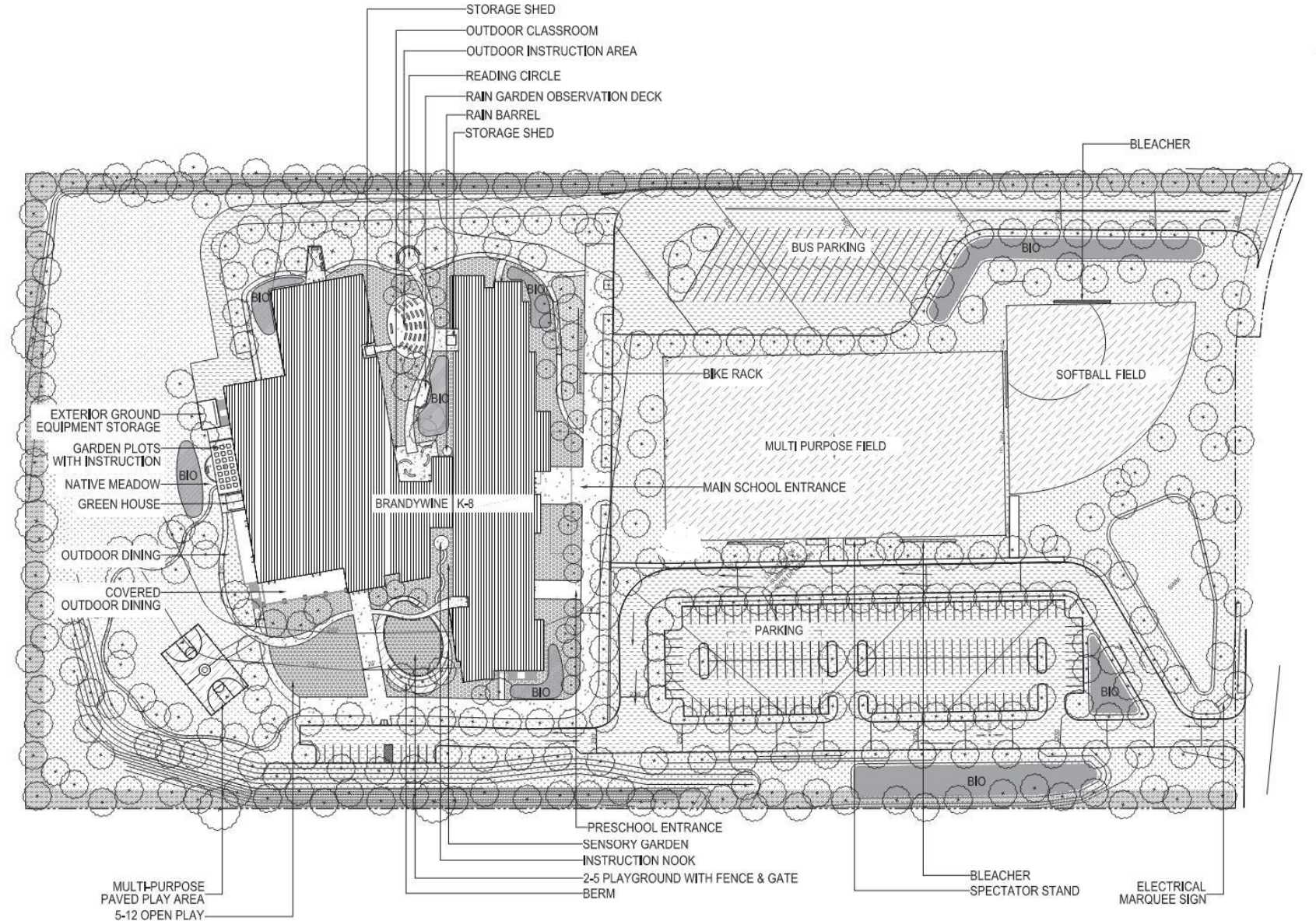


Connie Fan
LSG
Principal



Jam Kendrick
TB&A
Project Manager

PGCPS Site Plan



Note: Design is subject to change

1 LANDSCAPE PLAN



LEGEND			
	VEHICULAR PARKING		LAWN
	PEDESTRIAN CONCRETE PAVING		PLA (PLANTING AREA)
	ACRYLIC SPORT COURT		20' WPC BUFFER
	BIO (BIORETENTION)		EWF & PIP

PGCPS Precedents



STRUCTURED PLAYGROUND FOR PRE-K



STRUCTURED PLAYGROUND FOR PRIMARY & INTERMEDIATE



ENVIRONMENTAL PROGRAM & SENSORY PLAY GARDENS



OUTDOOR LEARNING ROOMS



EDUCATIONAL GARDEN & OUTDOOR DINING

Note: Design is subject to change



Preliminary Layout Plan

- Early childhood classrooms at grade
- Main entrance
- Heart of the School

DEPARTMENT LEGEND

	ACADEMIC - CORE
	ACADEMIC - EXTENDED
	ADMINISTRATION
	BUILDING SERVICES
	CIRCULATION
	DINING
	LIBRARY
	PERFORMING ARTS
	PHYS ED
	SPECIAL EDUCATION (SEAD)
	SUPPORT



First Level Plan

Note: Design is subject to change



Preliminary Layout Plan

- Elementary and Middle School zones
- Athletics

DEPARTMENT LEGEND

Blue	ACADEMIC - CORE
Light Blue	ACADEMIC - EXTENDED
Purple	ADMINISTRATION
Grey	BUILDING SERVICES
White	CIRCULATION
Red	DINING
Green	LIBRARY
Orange	PERFORMING ARTS
Dark Orange	PHYS ED
Light Blue	SPECIAL EDUCATION (SEAD)
Dark Grey	SUPPORT



Second Level

Note: Design is subject to change



Preliminary Layout Plan

- Upper grade classrooms
- Elementary and Middle School zones

DEPARTMENT LEGEND

Blue	ACADEMIC - CORE
Light Blue	ACADEMIC - EXTENDED
Purple	ADMINISTRATION
Grey	BUILDING SERVICES
Light Pink	CIRCULATION
Red	DINING
Teal	LIBRARY
Orange	PERFORMING ARTS
Light Orange	PHYS ED
Light Blue	SPECIAL EDUCATION (SEAD)
Dark Grey	SUPPORT



Third Level Plan

Note: Design is subject to change



Interior Elevations and Renderings



Note: Design is subject to change



Elevations and Renderings



Note: Design is subject to change



Elevations and Renderings



Note: Design is subject to change



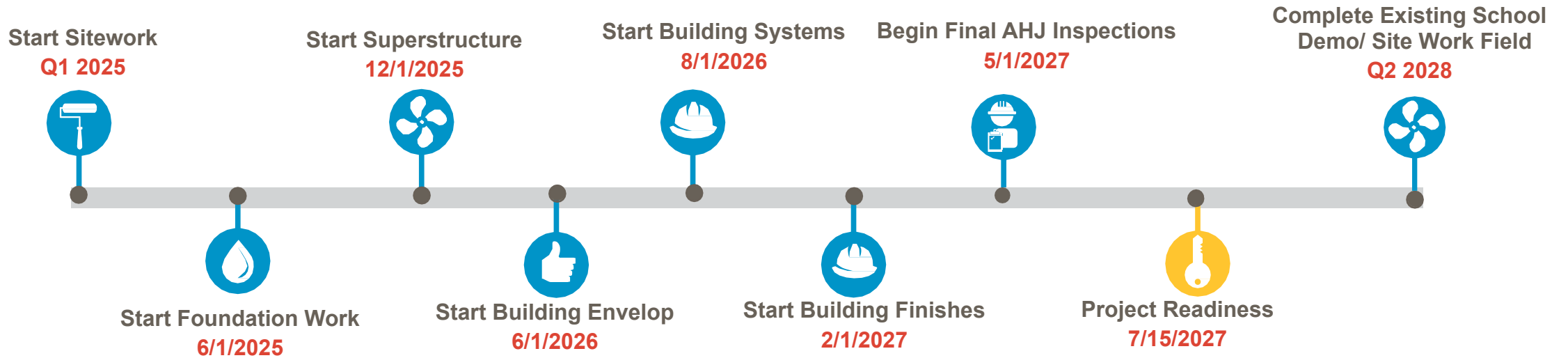
Elevations and Renderings



Note: Design is subject to change



Schedule Overview

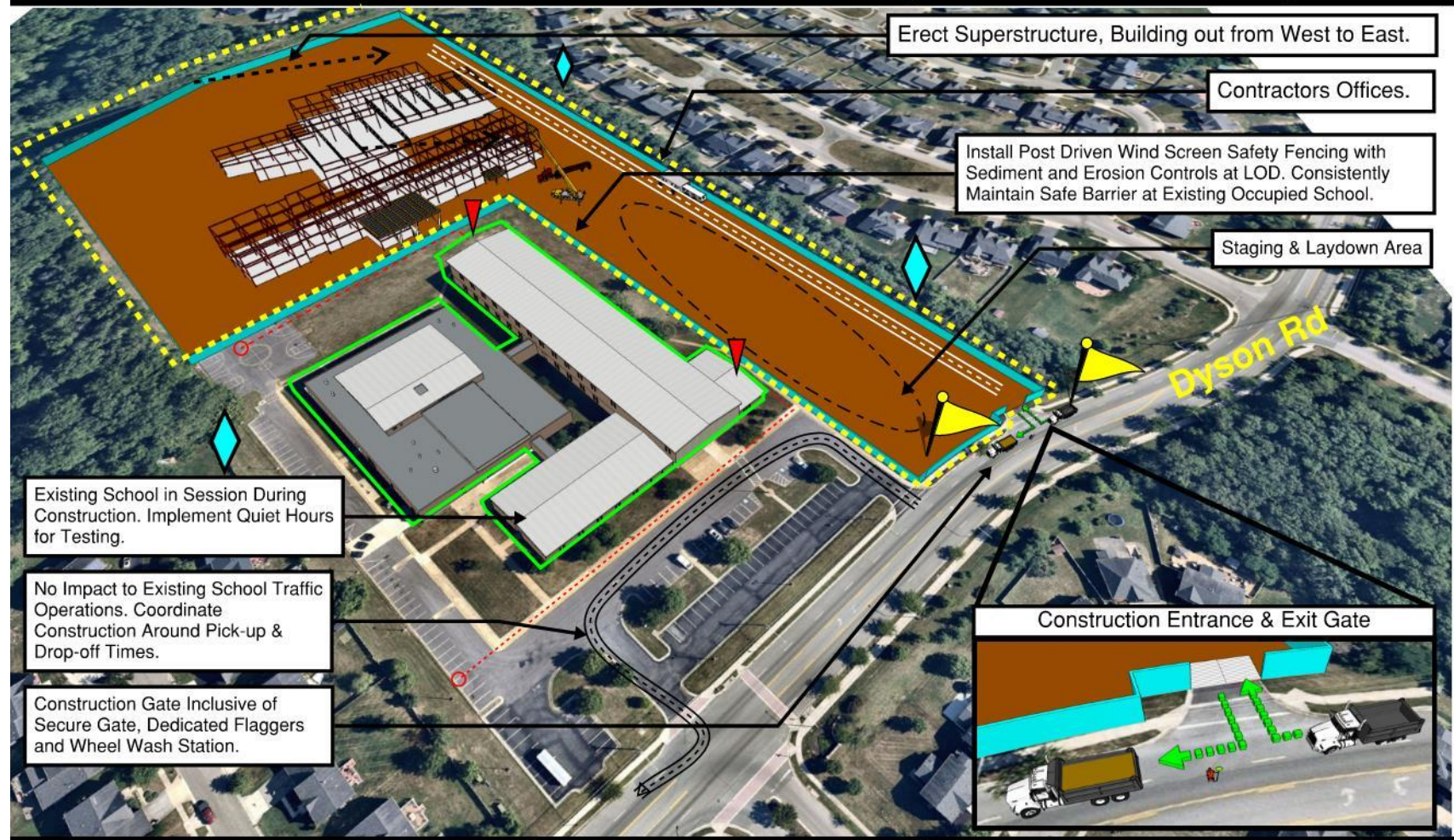




Logistics Plan

Brandywine K-8: New Building Logistic & Phasing Plan

Sequence 1 - New Building Construction



Sequence 1 - New Building Construction

Sequence 2 - Occupy New Demo of Existing

Sequence 3 - Final Site & Completion

- : Dedicated Flaggers
- : Vibration & Settlement Mointors
- : School Emergency Egress

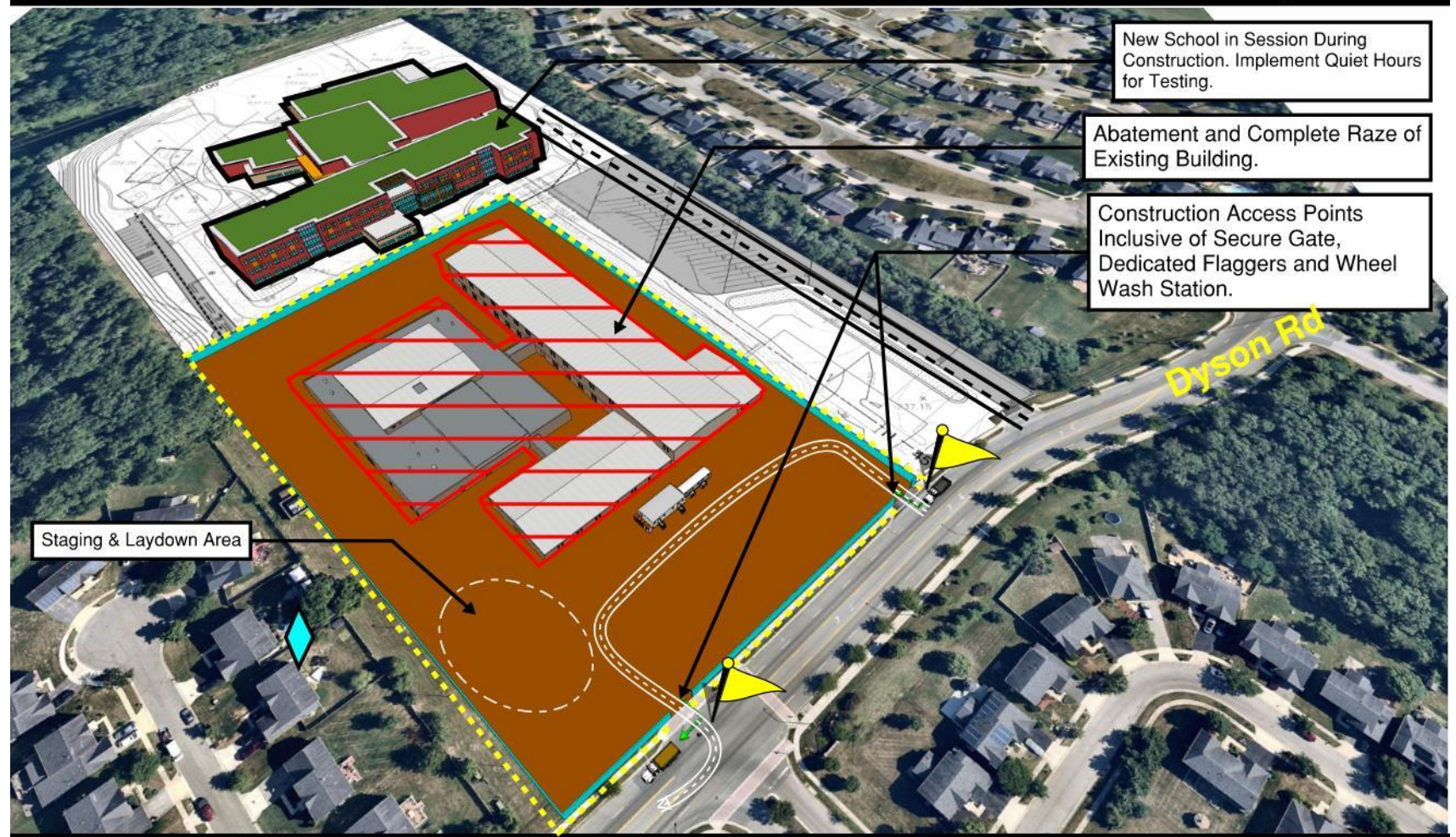
During the initial phase of this project, new construction will start on the north side of the currently occupied campus. Given MCN's extensive experience working on occupied campuses, special attention will be given to minimize noisy activities during testing and ensure that they do not disrupt the drop off and pick up times for the children.



Logistics Plan

Brandywine K-8: New Building Logistic & Phasing Plan

Sequence 2 - Occupy New Demo of Existing



Sequence 1 - New Building Construction

Sequence 2 - Occupy New Demo of Existing

Sequence 3 - Final Site & Completion

- : Dedicated Flaggers
- : Vibration & Settlement Mointors
- : School Emergency Egress

Once the new school is completed, the children will relocate to the new building, and MCN will shift the construction activities to the old existing school building. This phase will involve the demolition of the existing school and the installation of athletic fields and a parking lot.

Brandywine K-8: New Building Logistic & Phasing Plan

Sequence 3 - Final Site & Completion



Sequence 1 - New Building Construction
 Sequence 2 - Occupy New Demo of Existing
Sequence 3 - Final Site & Completion

-  : Dedicated Flaggers
-  : Vibration & Settlement Mointors
-  : School Emergency Egress

Upon the completion of the final site and all construction activities, the entire project will be handed over to the owner for full use. At this stage, the owner will have full access and control over the site and all its components.





Questions