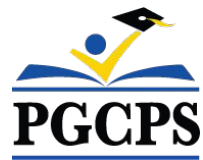




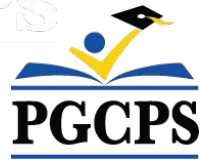
PGCPS . **ENGAGE . DESIGN . BUILD . COMMUNICATE** . PGCPS



# ROBERT FROST K-8 SCHOOL

COMMUNITY MEETING #` | FEBRUARY 21, 2023, 6:30 PM





## **Our Commitment**

PGCPS is committed to moving swiftly to deliver safe, state-of-the-art, and sustainable learning environments for our students, teachers, and communities.



## Agenda

- Team Introductions
- Design
- Construction Schedule and Logistics
- Q&A



# Team Introductions

## PGCPS

- **Jason Washington**, *Associate Superintendent of Supporting Services*

## Blueprint Schools

- **Shawn Matlock**, *Director*





# Team Introductions



**Jeff Barr**  
PLENARY  
Registered Representative

**Hafeez Habib**  
PLENARY  
Equity Members' Lead Project Manager

**Brett Sullivan**  
PLENARY  
Associate

**Adam Dunn**  
PLENARY  
Assistant Project Manager

**Jeremy Ebie**  
PHOENIX  
Equity Members' Project Manager

**Rob Summers**  
PHOENIX  
Operating Partner

**Peter Bullen**  
ELLISDON CAPITAL  
Senior Director



**Bill Beschorner**  
MCN  
Construction Process Executive in Charge

**Bassem Boustany**  
MCN  
Principal

**Yonas Menji**  
MCN  
Lead Construction Manager

**Rick Munford**  
MCN  
Preconstruction Director



**Sean O'Donnell**  
PERKINS EASTMAN  
Design Process Executive in Charge & Lead Architect

**Omar Calderon**  
PERKINS EASTMAN  
Design Principal



**Pete Cambell**  
ELLISDON FS  
Director, P3 Pursuits

**Brandon Kelley**  
USF  
Vice President

**Johnathan Bolden**  
RSC  
President



**Mamo Assefa**  
Delon Hampton  
President

**James Gittens**  
Delon Hampton  
Vice President



**Cannie Fan**  
LSG  
Principal



**Jam Kendrick**  
TB&A  
Project Manager

# PGCPS Site Plan

- ① BUS DROP OFF
- ② PARKING
- ③ MAIN ENTRANCE
- ④ PRESCHOOL ENTRANCE
- ⑤ COMMUNITY ENTRANCE
- ⑥ ELECTRIC MARQUEE SIGN
- ⑦ RAIN GARDEN
- ⑧ ENTRY PLAZA
- ⑨ PRE-K PLAYGROUND
- ⑩ PRIMARY PLAYGROUND
- ⑪ SOCCER FIELD
- ⑫ BASKETBALL COURT
- ⑬ COURTYARD
- ⑭ OUTDOOR CLASSROOM
- ⑮ READING CIRCLE
- ⑯ EDUCATIONAL ARBORETUM
- ⑰ GARDEN BEDS
- ⑱ POLLINATOR GARDEN



Note: Design is subject to change



# PGCPS Planting



Note: Design is subject to change



# PGCPS Precedents

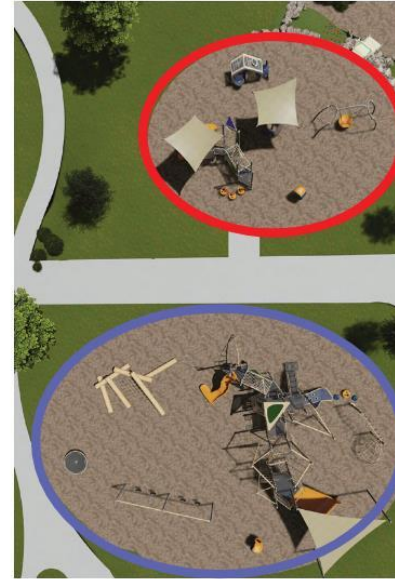


Note: Design is subject to change



# PGCPS Playground

Pre-K Playground



Primary Playground







# Preliminary Layout Plan

- Early childhood classrooms at grade
- Main entrance
- Heart of the School

**DEPARTMENT LEGEND**

	ACADEMIC - CORE
	ACADEMIC - EXTENDED
	ADMINISTRATION
	BUILDING SERVICES
	CIRCULATION
	DINING
	LIBRARY
	PERFORMING ARTS
	PHYS ED
	SPECIAL EDUCATION (SEAD)
	SUPPORT



**First Level Plan**

Note: Design is subject to change





# Preliminary Layout Plan

- Elementary and Middle School zones
- Athletics

**DEPARTMENT LEGEND**

Blue	ACADEMIC - CORE
Light Blue	ACADEMIC - EXTENDED
Purple	ADMINISTRATION
Grey	BUILDING SERVICES
White	CIRCULATION
Red	DINING
Teal	LIBRARY
Orange	PERFORMING ARTS
Light Orange	PHYS ED
Light Blue-Grey	SPECIAL EDUCATION (SEAD)
Dark Grey	SUPPORT



**Second Level**

Note: Design is subject to change





# Preliminary Layout Plan

- Upper grade classrooms
- Elementary and Middle School zones

**DEPARTMENT LEGEND**

ACADEMIC - CORE
ACADEMIC - EXTENDED
ADMINISTRATION
BUILDING SERVICES
CIRCULATION
DINING
LIBRARY
PERFORMING ARTS
PHYS ED
SPECIAL EDUCATION (SEAD)
SUPPORT



**Third Level Plan**

Note: Design is subject to change



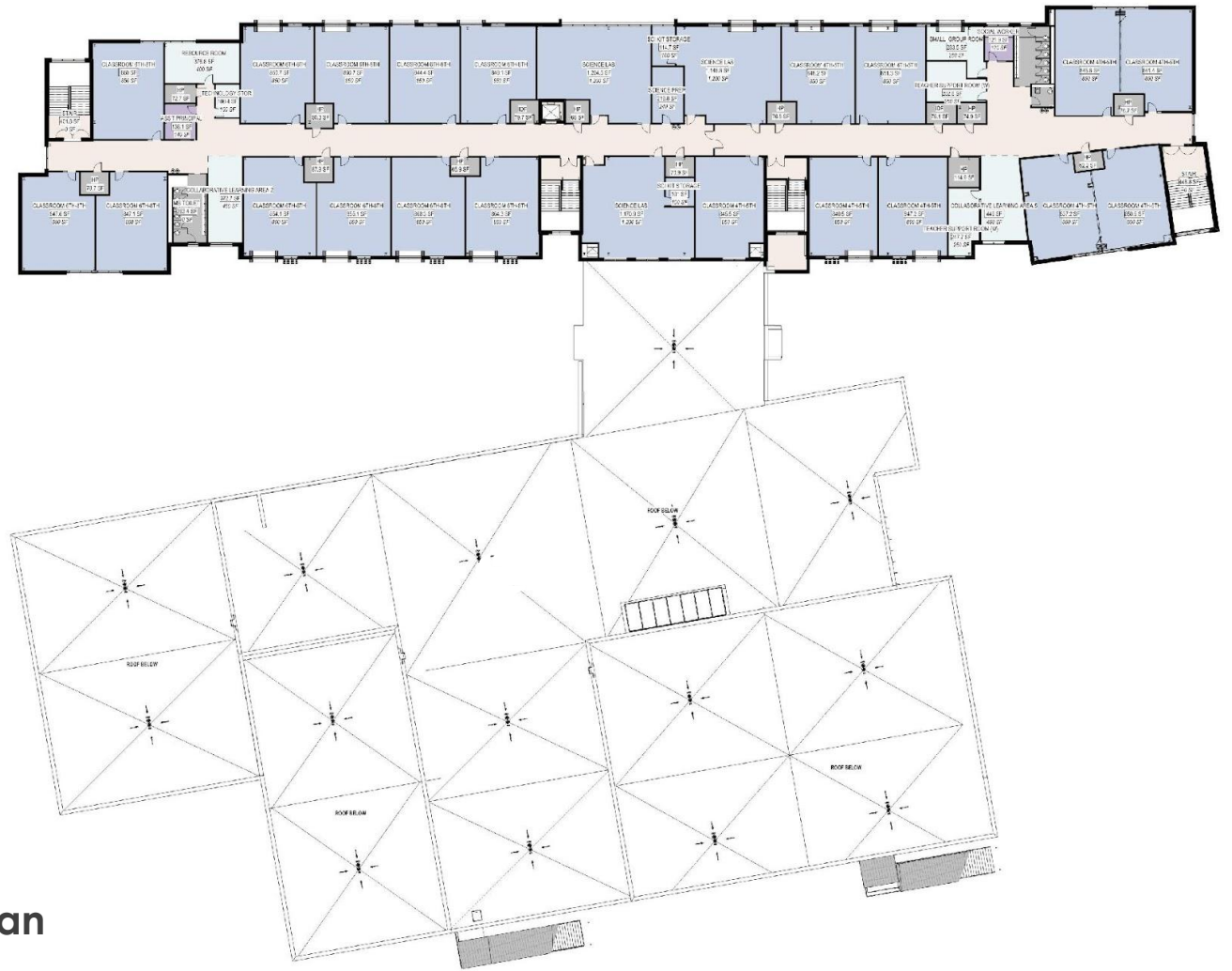


# Preliminary Layout Plan

- Upper grade classrooms
- Elementary and Middle School zones

**DEPARTMENT LEGEND**

	ACADEMIC - CORE
	ACADEMIC - EXTENDED
	ADMINISTRATION
	BUILDING SERVICES
	CIRCULATION
	DINING
	LIBRARY
	PERFORMING ARTS
	PHYS ED
	SPECIAL EDUCATION (SEAD)
	SUPPORT



**Fourth Level Plan**

Note: Design is subject to change

# Interior Elevations and Renderings







# Elevations and Renderings



Note: Design is subject to change





# Elevations and Renderings



Note: Design is subject to change





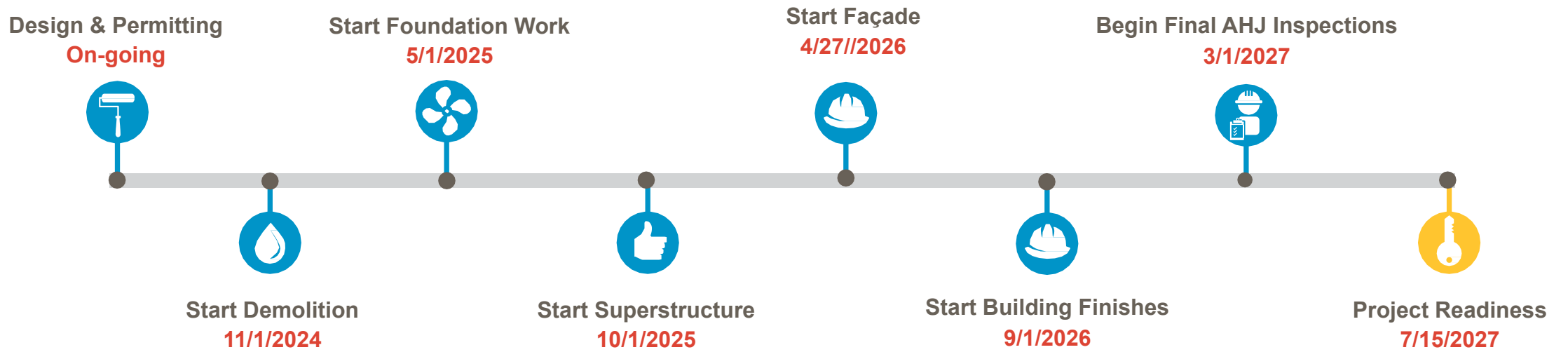
# Elevations and Renderings



Note: Design is subject to change



# Schedule Overview





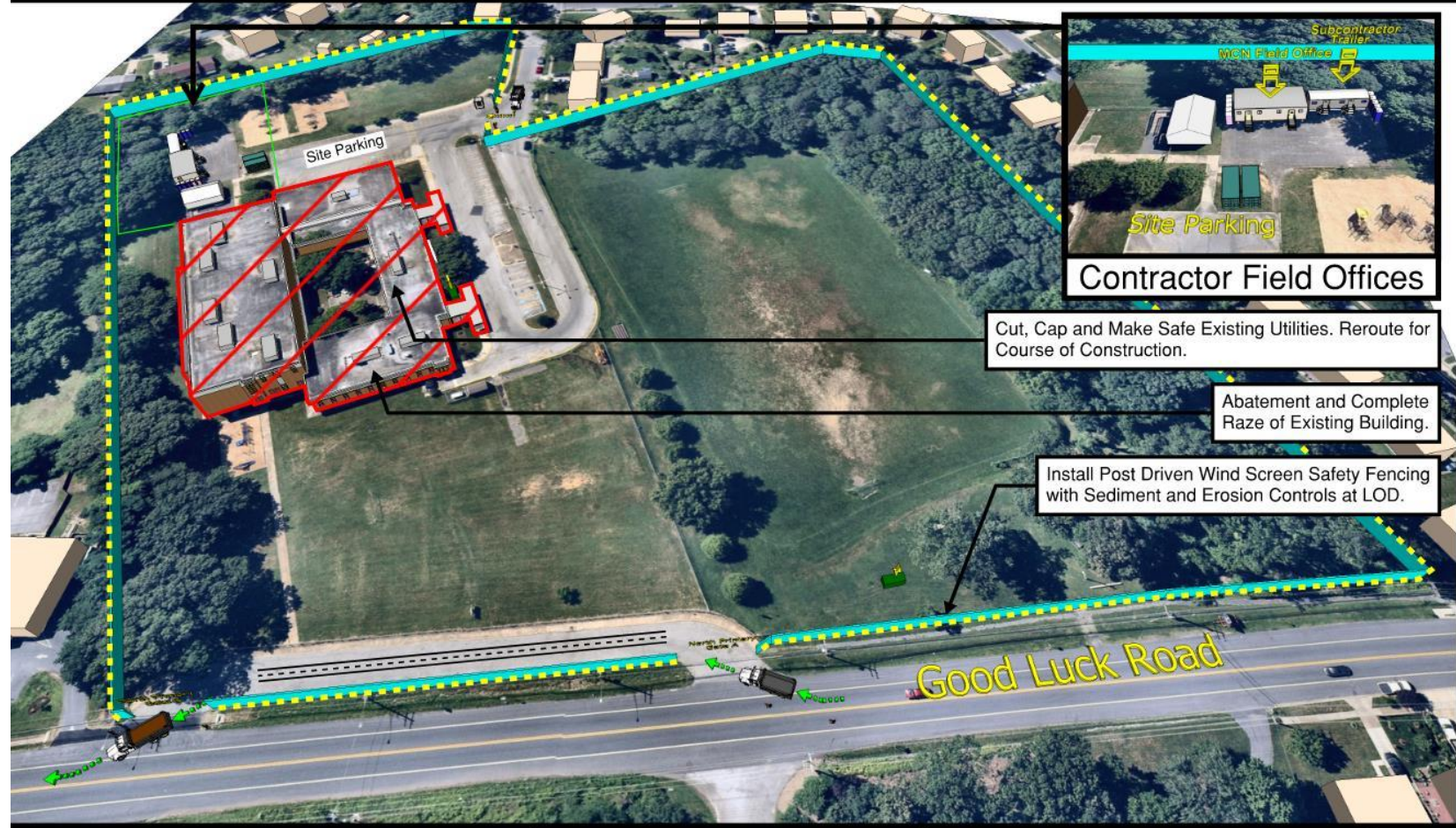
**Robert Frost K-8: New Building Logistic & Phasing Plan**

**Sequence 2 - Demolition & Rough Grading**



April 2025 - September 2025

Page 1 of 3



Sequence 1 - Site Controls & LOD (Not Shown)

**Sequence 2 - Demolition & Rough Grading**

Sequence 3 - Superstructure & Facade

Sequence 4 - Final Site & Completion

- : Dedicated Flaggers
- : Vibration & Settlement Monitors

Prior to initiating the demolition and rough grading process, MCN will take proactive steps to establish control over the site. This will involve the installation of safety fencing and sediment and erosion control systems to ensure a safe working environment. Existing utilities will be thoroughly assessed, and necessary measures will be taken, including careful identification, cutting, capping, and ensuring their safety. These utilities will then be rerouted and repurposed to serve as temporary utilities, providing essential support for the construction activities.



NTS



# Logistics Plan

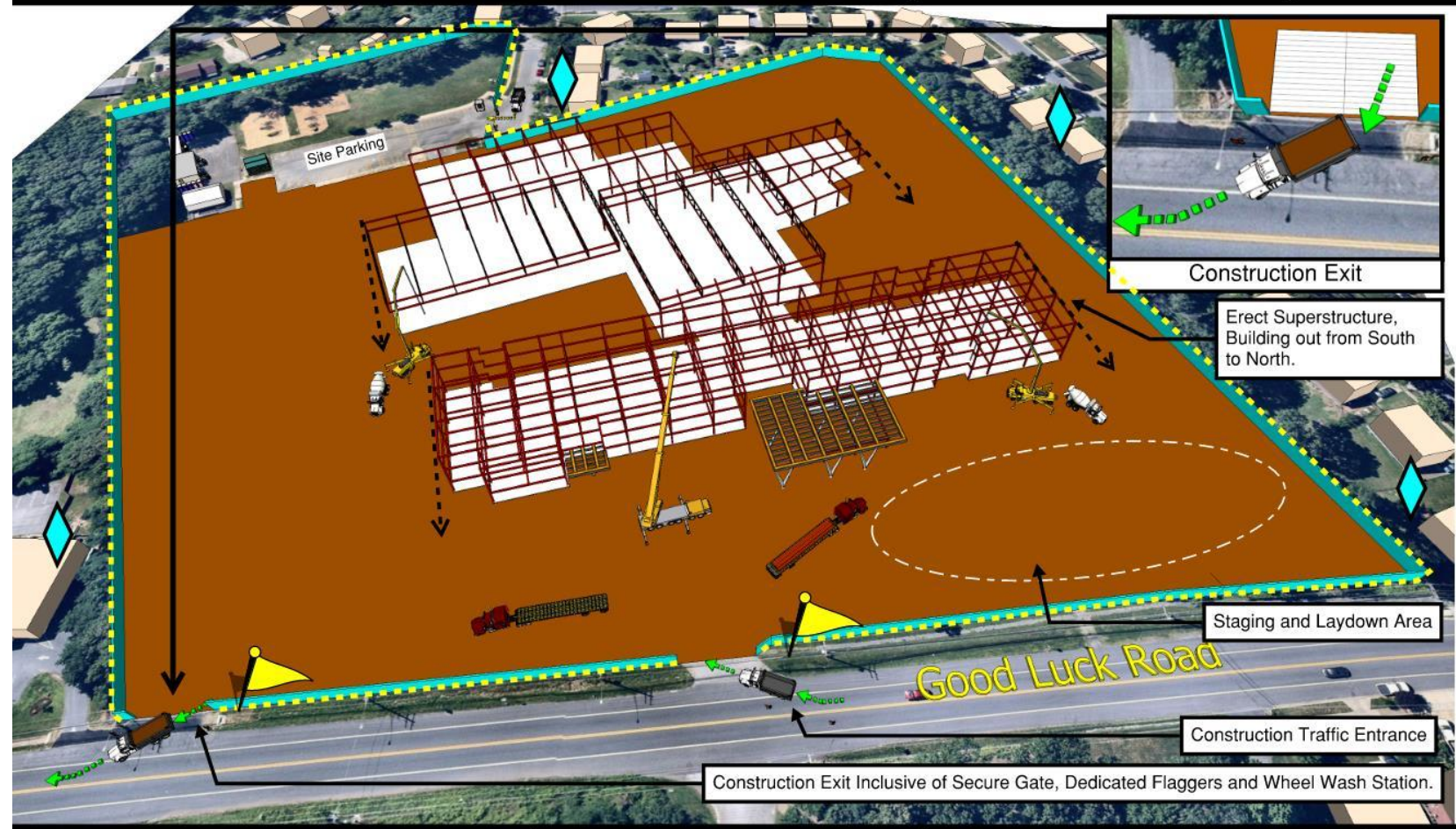
## Robert Frost K-8: New Building Logistic & Phasing Plan

### Sequence 3 - Superstructure & Facade



October 2025 - September 2026

Page 2 of 3



- Sequence 1 - Site Controls & LOD (Not Shown)
- Sequence 2 - Demolition & Rough Grading
- Sequence 3 - Superstructure & Facade**
- Sequence 4 - Final Site & Completion

-  : Dedicated Flaggers
-  : Vibration & Settlement Monitors

The construction of the new school will occur within the existing site, specifically in a location that is clear of any obstructions. Considerable care has been taken to ensure that the construction activities are situated at a sufficient distance from neighboring properties. This precautionary measure aims to prevent any potential disruptions caused by excessive vibration and noise that could affect the surrounding areas.



NTS



# Questions