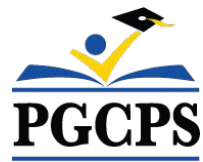




PGCPS . **ENGAGE . DESIGN . BUILD . COMMUNICATE** . PGCPS



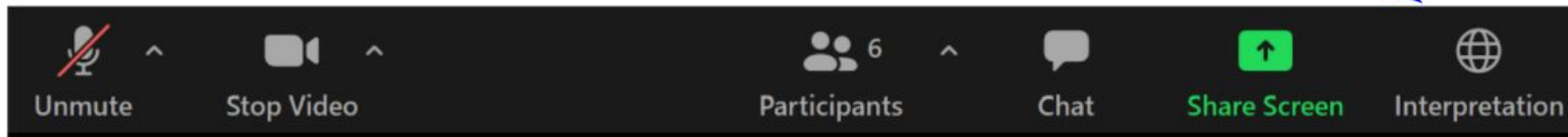
# WILLIAM WIRT MIDDLE SCHOOL

PROJECT UPDATE MEETING | OCTOBER 30th, 6:30 PM



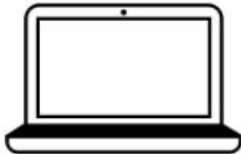
## SERVICIOS DE INTERPRETACIÓN *INTERPRETING SERVICES*

La interpretación simultánea  
está disponible en español.  
*Simultaneous interpretation is  
available in Spanish.*



# SERVICIOS DE INTERPRETACIÓN

## *INTERPRETING SERVICES*



**On a computer**-- At the bottom of the screen will be an interpretation globe. Click that globe and then select *Spanish*.

**En una computadora**-- En la parte baja de la pantalla habrá un globo de interpretación. Haga clic en ese globo y seleccione "Spanish."

---



**On a mobile device**-- At the bottom of the screen, tap the ellipses icon on the bottom right (...).

- Tap *Language Interpretation*.
- Tap *Spanish*.

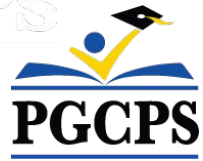
**En un dispositivo móvil**-- En la parte baja de la pantalla, toca el icono de elipses en la parte baja derecha (...).

- Toque *Language Interpretation*.
- Toque *Spanish*.



## We value your input.

- Please type your questions/comments in the Q&A area of Zoom.
- Questions and answers from this town hall will be posted on the school project page at <https://offices.pgcps.org/cip/>.



## Our Commitment

PGCPS is moving swiftly to deliver safe, state-of-the-art, and sustainable learning environments for our students, teachers, and communities.

Through a three-pronged approach, traditional Capital Improvement, Staged Renovations, and the nation's first Public School P3 Design-Build-Maintain approach, otherwise known as the Blueprint Schools Program, we're on track to deliver over 25 modernized school facilities in just 10 years.



## Agenda

- Team Introductions
- Project Scope and Phasing Review
- Project Timeline Review
- Construction Update
- Q&A



## Team Introductions

### PGCPS Department of Capital Programs

- **Jason Washington**, *Associate Superintendent of Supporting Services*
- **Shawn Matlock**, *Director*
- **Will Smith**, *Project Management Supervisor*
- **Henry Lewis**, *Project Manager*

### Crabtree, Rohrbaugh & Associates Architects

- **Seth Wentz**, *Project Architect*

### Keller Brothers

- **Justin Short**, *Project Executive*
- **Brad Meyer**, *Project Manager*
- **Cameron Orwashel**, *Assistant Project Manager*
- **Michael Bailey**, *Superintendent*
- **Tyler Jurvelin**, *Assistant Superintendent*



## Project Scope

The Replacement of the William Wirt Middle School for Prince George's County Public Schools in Riverdale, Maryland. The Project consists of the construction of a new school facility, associated site work, and the demolition of the existing school. The Project will be performed in four main phases that will generally be performed sequentially.



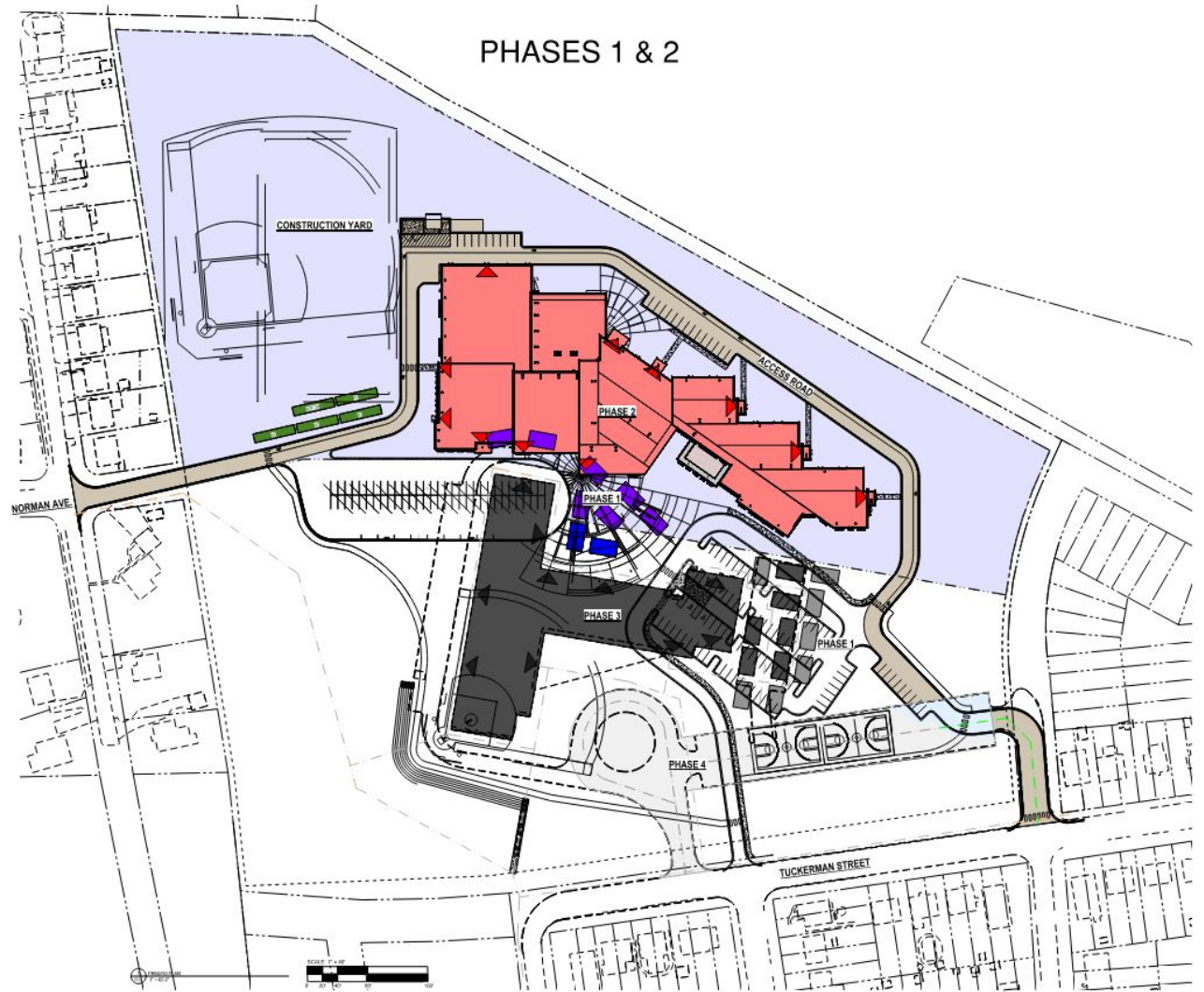


# Project Scope

## Project Phases

**Phase 1** consists of the relocation of the existing modular classrooms, installation of sediment and erosion controls, installation of new utilities to the new school building, and some site work.

**Phase 2** includes the construction of the new school building and is constructed in conjunction with the progression of Phase 1 site work. Upon completion of the new school and Phase 1 site work adjacent to the new building, the Owner can utilize the new facility and vacate the existing school building.



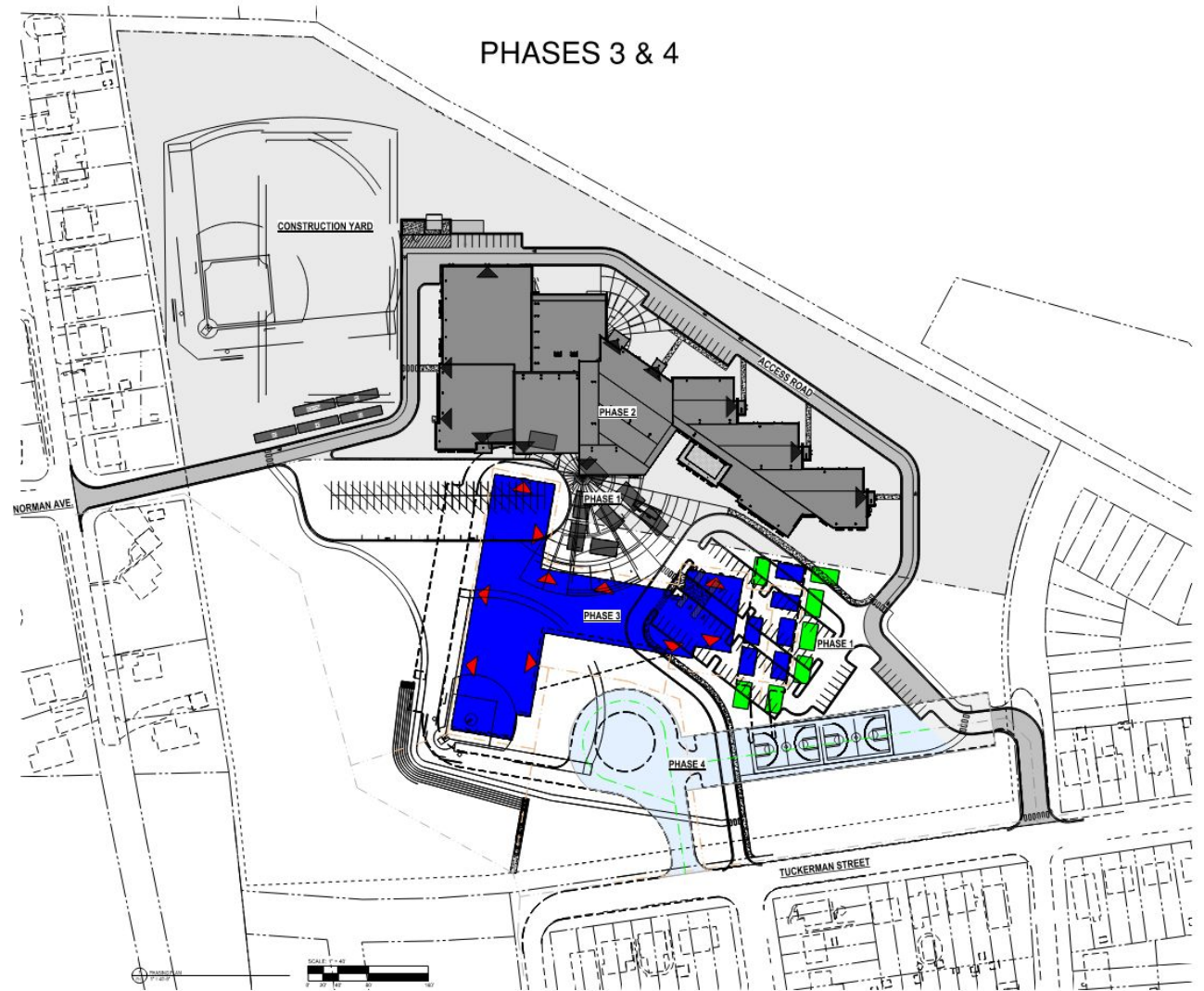


# Project Scope

## Project Phases

**Phase 3** consists of utility disconnects and demolition of the existing school building.

**Phase 4** includes the completion of all site work including completion of the installation of the stormwater system, bio-retention structures, a new ball field, amphitheater seating, new bus loop, newly paved surface play courts, fencing, and a new parking lot with access to Tuckerman Street.





# Site Plan





# Project Scope



*1st Floor Commons Area*



# Project Scope





# Project Scope



*Cafeteria*



*Typical Classroom*



# Project Scope



*Collaboration Space*



*2nd Floor Lobby*



# Project Timeline

<b>November 2023</b>	Permanent Power
<b>August 2023</b>	Phase 1 Substantial Completion
<b>April 2024</b>	Phase 2 Substantial Completion
<b>August 2024</b>	Phase 3 Substantial Completion
<b>January 2025</b>	Phase 4 Substantial Completion
<b>Spring 2025</b>	<b>Final Completion</b>





# Construction Overview

Major Completed Work	Work in Progress/Next Step	Next Steps
Structural steel and roofing installation.	Interior finishes have begun.	Commissioning activities.
Switchgear was installed, and is waiting on permanent power by Pepco .	MEP above ceiling rough-ins are ongoing.	Equipment start-ups throughout the building.
In-wall electrical and plumbing rough-ins.	Floor preparation and VCT installation have begun.	Continue interior finishes.
Sprinkler rough-ins.	Interior painting is ongoing.	Elevator adjusting and balancing.
Exterior Veneer and interior stone veneer.	Site work is ongoing.	Curtain wall assemblies.
Installation of rooftop equipment screens.	Ceiling grid installation is ongoing.	



# Construction Overview



*Drone Aerial*



# Construction Overview



*Exterior Metal Panels*



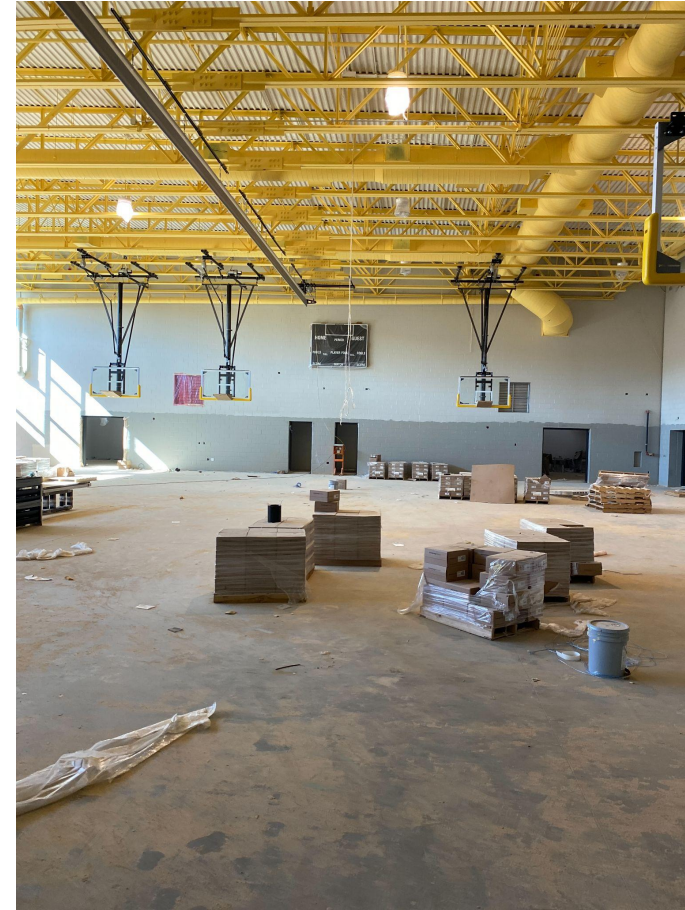
*Exterior Metal Panels*



# Construction Overview



*Metal Panels*



*Gym*



# Construction Overview



*Classroom*



*Classroom*



# Construction Overview



*Media Center*



*Casework Installation*



- Please type your questions/comments in the Q&A area of Zoom.
- Questions and answers from this town hall will be posted on the William Wirt MS project page at [www.pgcps.org/cip](http://www.pgcps.org/cip).
- If you have additional questions, please email them to [capital.programs@pgcps.org](mailto:capital.programs@pgcps.org).





# Thank You!

To submit additional questions and to view today's presentation, visit [www.pgcps.org/cip](http://www.pgcps.org/cip).