

Prince George's County Public Schools



Crabtree, Rohrbaugh & Associates
ARCHITECTURAL/ENGINEERING SERVICES

PRINCE GEORGE'S COUNTY
PUBLIC SCHOOLS
WILLIAM WIRT
MIDDLE SCHOOL
OCTOBER 7TH, 2019

PROJECT TEAM

Crabtree, Rohrbaugh & Associates Architectural, Interior Design, CA

John Beddia, AIA, LEED AP
Principal in Charge

Richard LeBlanc, AIA, LEED AP
Director of Design

Jeffrey Straub, AIA, REFP, LEED AP, CPD
Project Manager

Larry Levato, RA, LEED AP
Project Manager

Seth H. Wentz
Project Manager

John Pryor, RA
Project Architect

Nichole Seibert
Interior Design Project Manager

Danette Quave
Interior Design Project Manager

John Yarnall
Construction Administration

Lori Walls
Director of Client Relations

Global Engineering Solutions MEP, FP & Net Zero

Essi Najafi
Principal

Vassilis Skardis, PE
Sr. Mechanical Engineer

Farshad Majidian, PE
Sr. Electrical Engineer

Mark Wilson, CPD, LEED AP
Sr. Plumbing Engineer

Laleh Zargarinejad, PE
Sr. Fire Protection Engineer

Carroll Engineering Site/Civil Engineering

Craig Shannon, PE
Civil Engineer

Columbia Engineering, Inc. Structural Engineering

Randall Haist, PE
Principal

MK Consulting Engineers Landscape Architecture

David Locke, FASLA
Landscape Architect

Nyikos Foodservice

Jay Garcia, FCSI
Principal

Educational Systems Planning Technology

Bryan Jones
Multi-Media AV Designer

Forella Group Cost Estimating

Peter Forella
Principal

ECS Unlimited Environmental & Geotechnical

Gregory McIsaac, CPG
Environmental Department Manager

Metropolitan Acoustics Acoustics & Audio/Visual

Felicia Doggett
Principal Consultant

Prince George's
County Public
Schools

AGENDA

Objectives / Site Analysis

Review Site Design

Review Building Design

Project Schedule Update

EXISTING CHALLENGES

- BUILDING CAPACITY : 850
- STUDENT POPULATION: 1,200
 - POPULATION IS ANTICIPATED TO CONTINUE TO GROW
- BUILDING AGE: 1963
 - SYSTEMS NEED REPLACED
 - ROOF IS BEYOND LIFE & LEAKING
 - WINDOWS ARE BEYOND LIFE
 - SECURITY ISSUES
- SEVERAL MODULAR CLASSROOMS ARE IN NEED OF REPLACEMENT
- SITE SAFETY: ONLY ACCESS IS TUCKERMAN STREET

PROJECT GOALS

- SCHOOL SIZED FOR POPULATION
- SAFE AND SECURE BUILDING
- EFFICIENT SYSTEMS
- PROVIDE QUALITY EDUCATIONAL SPACES THAT SUPPORT PROGRAMS



PROPOSED SITE DESIGN

GRAPHIC LEGEND

▲ MAIN ENTRY / VISITOR ENTRY

▲ SECONDARY ENTRY / BUS ENTRY

▲ COMMUNITY USE ENTRY & PARKING

▲ REAR ENTRY

--- BUS DROP-OFF

--- PARENT DROP-OFF

▲ DELIVERIES

■ WASTE STORAGE

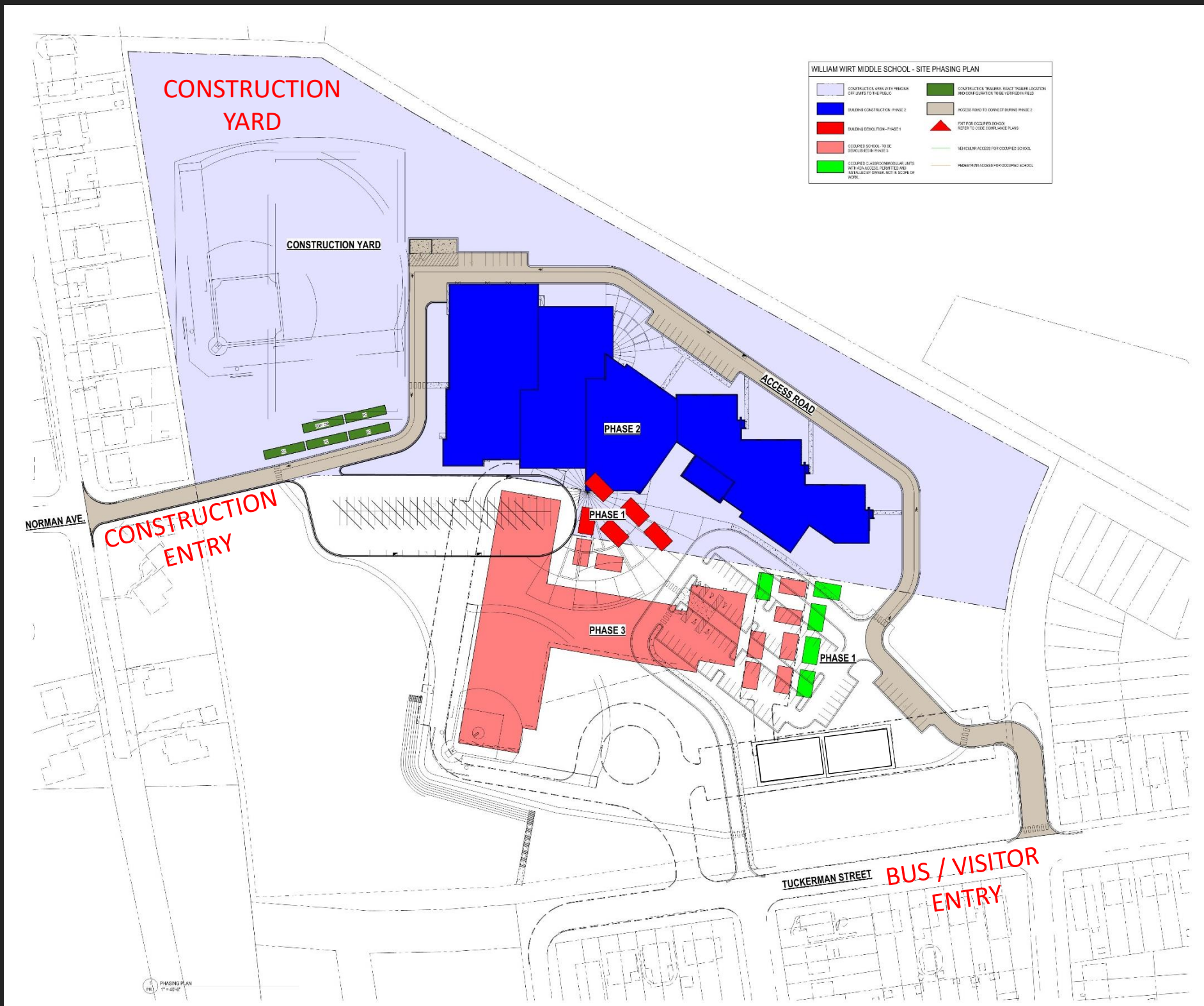
--- TRAFFIC GATE



PHASED CONSTRUCTION PLAN

CONSIDERATIONS:

- TYPICAL CONSTRUCTION HOURS 7am – 4pm
- NOISE IN COMPLIANCE WITH P.G. NOISE CONTROL ORDINANCE OR SEEK TEMPORARY WAIVERS FOR SPECIFIC ACTIVITIES
- DUST CONTROL MEASURES WILL BE REQUIRED INCLUDING WETTING THE SITE



In the interest of maintaining safe educational environments for our students, the floor plans that were included in the presentation on 10/07/2019 have been removed from the publicly shared document.

Thank you for your understanding.

Sincerely

PGCPS

Crabtree, Rohrbaugh & Associates



**MAIN ENTRY / GYM – VIEW
FROM SOUTHWEST**



MAIN ENTRY / GYMNASIUM - VIEW FROM SOUTHWEST



CLASSROOM WING - VIEW FROM NORTHEAST REAR



MAIN ENTRY / CLASSROOM WING - VIEW FROM SOUTHEAST



REAR ENTRY / CAFETERIA - VIEW FROM NORTH



MEDIA CENTER ENTRANCE 2ND FLOOR



CAFETERIA / PLATFORM



LOBBY 1ST FLOOR



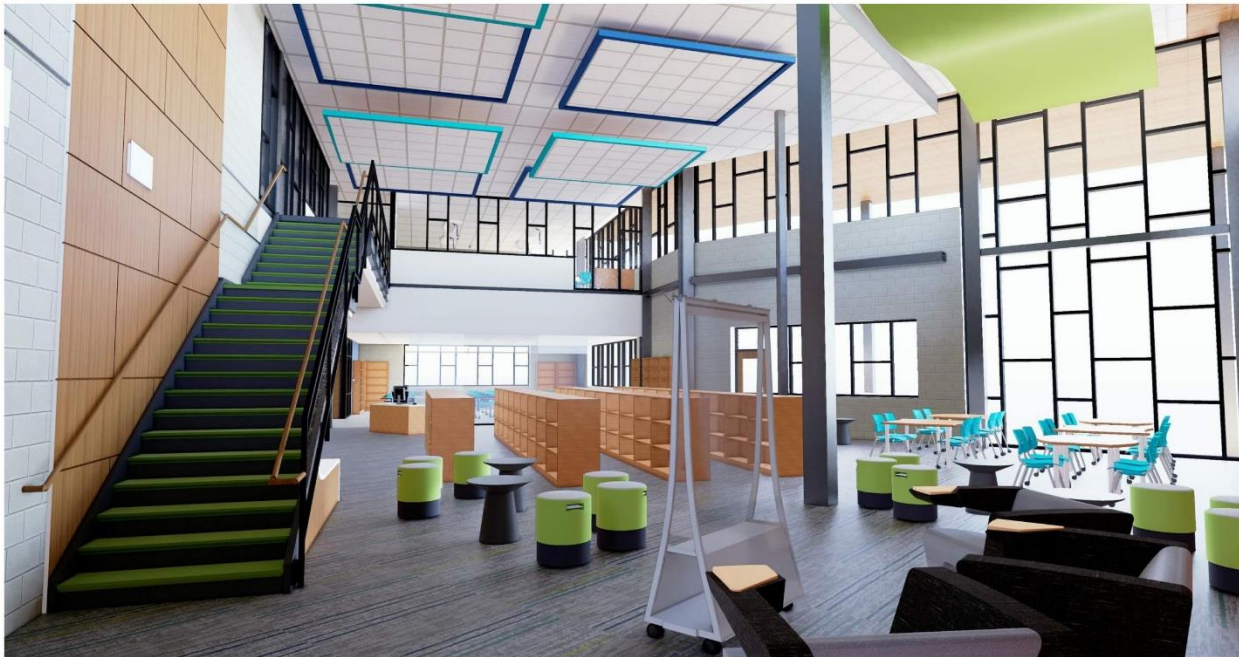
COLLABORATION AREAS



TYPICAL CLASSROOM



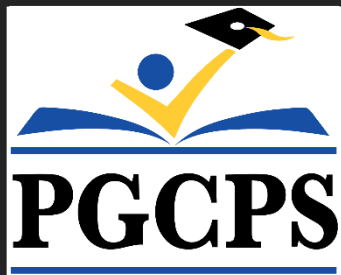
MEDIA CENTER LOOKING WEST



MEDIA CENTER LOOKING EAST



MEDIA CENTER LOOKING NORTH



Prince George's County Public Schools
www.pgcps.org



Crabtree, Rohrbaugh & Associates
www.cra-architects.com