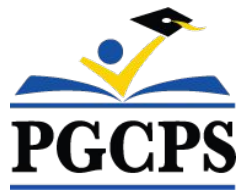




PGCPS . **ENGAGE . DESIGN . BUILD . COMMUNICATE** . PGCPS

# SUITLAND HIGH SCHOOL

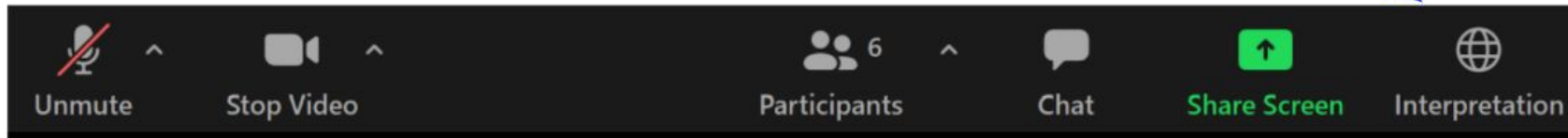
PROJECT UPDATE MEETING | JUNE 5th, 5:30 PM



# SERVICIOS DE INTERPRETACIÓN

## *INTERPRETING SERVICES*

La interpretación simultánea  
está disponible en español.  
*Simultaneous interpretation is  
available in Spanish.*



# SERVICIOS DE INTERPRETACIÓN

## *INTERPRETING SERVICES*



**On a computer**-- At the bottom of the screen will be an interpretation globe. Click that globe and then select *Spanish*.

**En una computadora**-- En la parte baja de la pantalla habrá un globo de interpretación. Haga clic en ese globo y seleccione "Spanish."

---



**On a mobile device**-- At the bottom of the screen, tap the ellipses icon on the bottom right (...).

- Tap *Language Interpretation*.
- Tap *Spanish*.

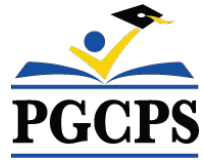
**En un dispositivo móvil**-- En la parte baja de la pantalla, toca el icono de elipses en la parte baja derecha (...).

- Toque *Language Interpretation*.
- Toque *Spanish*.



## We value your input.

- Please type your questions/comments in the Q&A area of Zoom.
- Questions and answers from this town hall will be posted at [www.pgcps.org/cip](http://www.pgcps.org/cip).



## Our Commitment

PGCPS is moving swiftly to deliver safe, state-of-the-art, and sustainable learning environments for our students, teachers, and communities.

Through a three-pronged approach, traditional Capital Improvement, Staged Renovations, and the nation's first Public School P3 Design-Build-Maintain approach, otherwise known as the Blueprint Schools Program, we're on track to deliver over 25 modernized school facilities in just 10 years.

## Agenda

- Team Introductions
- Project Overview
- Construction Update
- Community Engagement
- Q&A

# Team Introductions



**Dr. Charoscar Coleman**  
Chief Operating Officer



**Shawn Matlock**  
Director  
Department of Capital Programs

# Team Introductions

 PGCPS Proud Alum!



**Will Smith**  
Project Management Supervisor,  
PGCPS Capital Programs

 PGCPS Proud Alum!



**Sean Nickols**  
Project Manager,  
PGCPS Capital Programs



**Tom Wheeler**  
AE, Project Manager,  
cox graae + spack



**Rodney Howlett**  
AE, Construction Administration  
Lead  
cox graae + spack



**Brunson Cooper**  
Corenic Construction,  
President

 PGCPS Proud Parent!



**Carlos Flores**  
Project Executive,  
Turner Construction



**Latoya Stephens**  
Project Manager,  
Turner Construction



**Simon Hellyer**  
Project Superintendent,  
Turner Construction



**Frank Johnson**  
Project Engineer  
Turner Construction

 PGCPS Proud Alum!



**Manny Sampson**  
Community & Citizenship Manager,  
Turner Construction



# Project Overview

**Full replacement** of the existing 344,875 SF and 2,477 student Suitland High School Campus consisting of Comprehensive High School (CHS), Center for Visual and Performing (CVPA) Arts and Career Technical Education (CTE). **The proposed design is 389,108 sf with a capacity of 1,500 comprehensive and 500 CVPA students.** The new facility will be one new facility with the comprehensive and the CVPA school programs only. The CTE programs will be relocated to Crossland High School for school year 2022 - 2023, which will be designated as the new southern comprehensive CTE school for the county.



Auditorium Lobby



Learning Station



Arts Commons

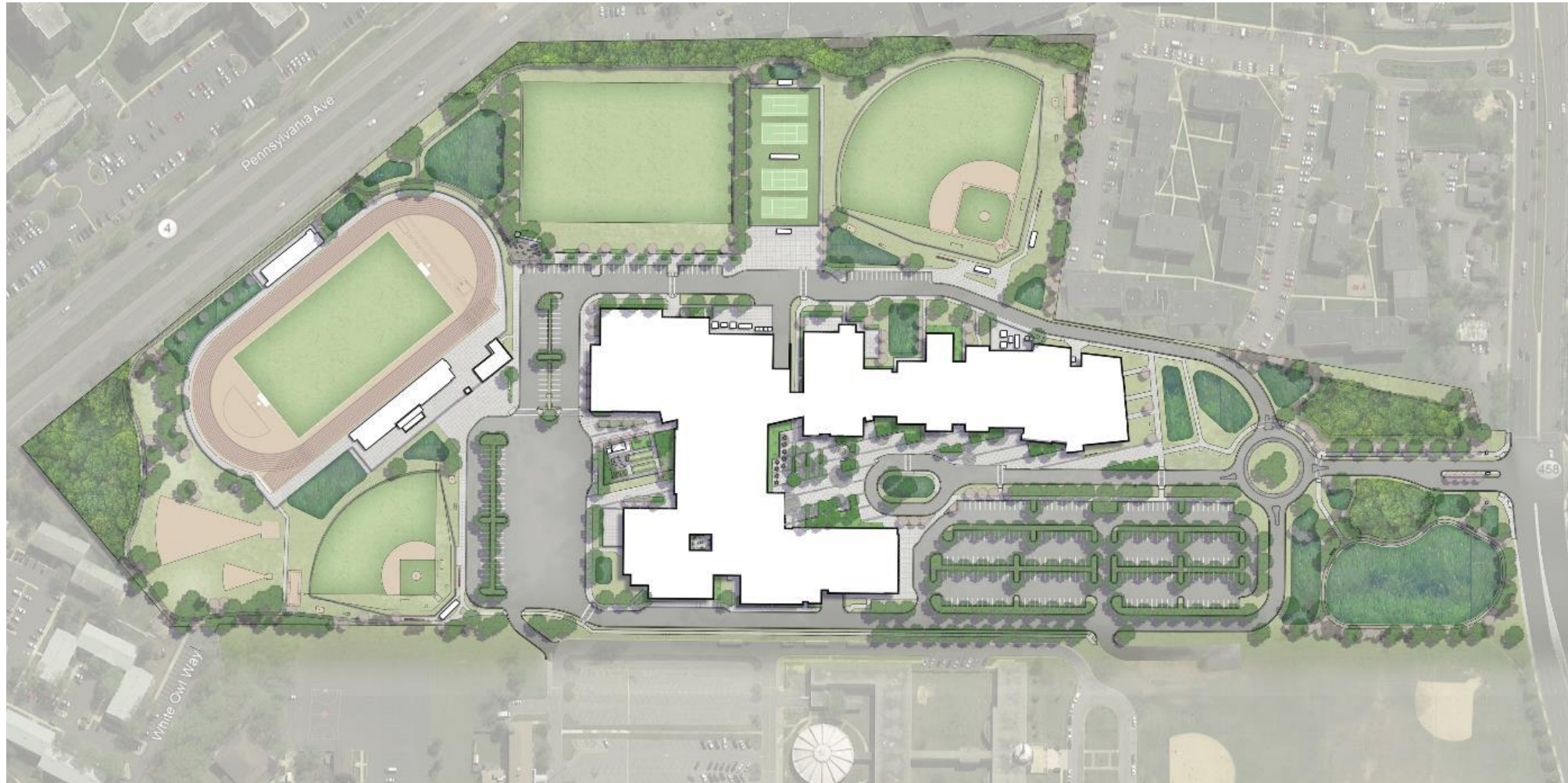


Dance Commons

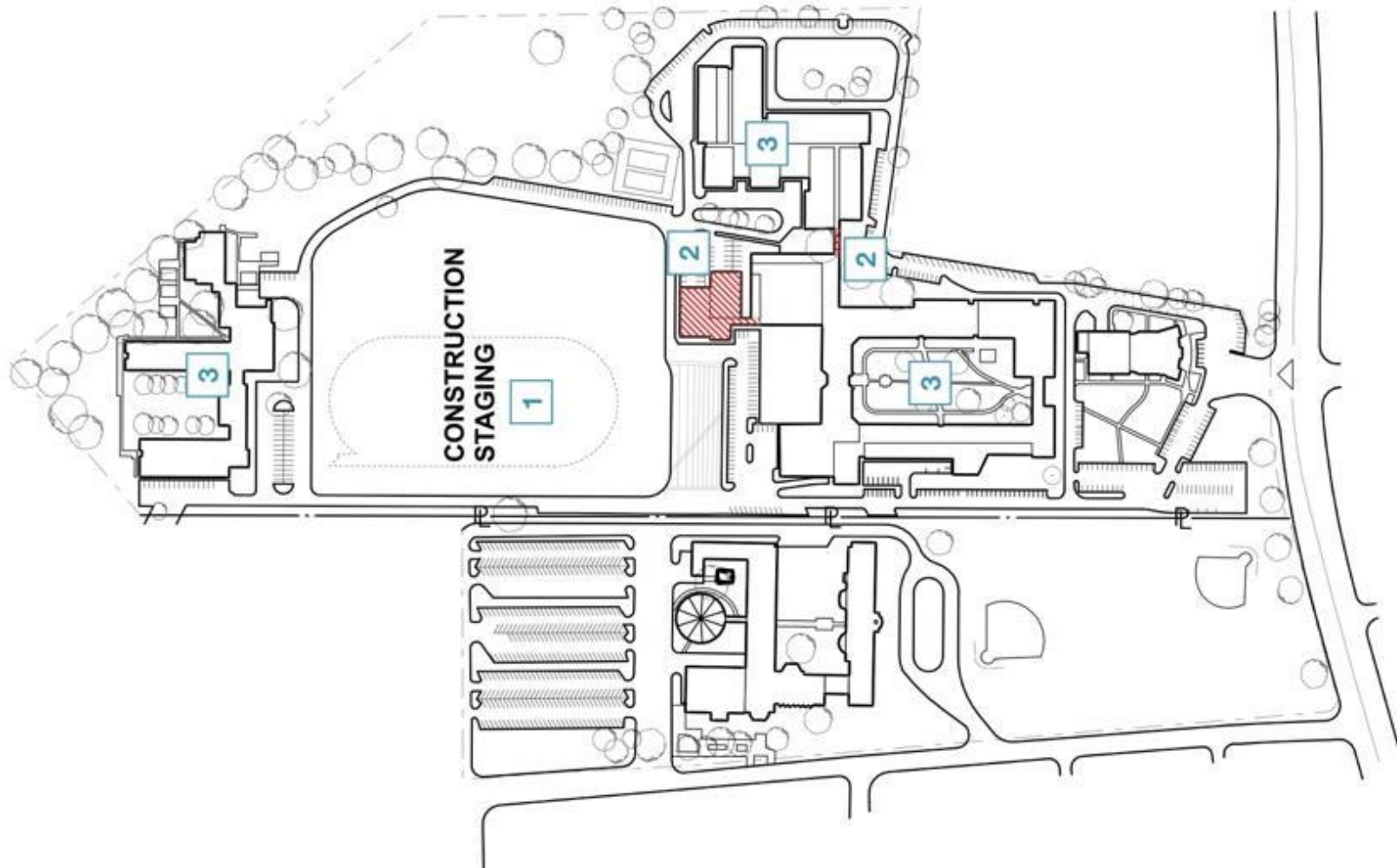
# Project Overview



# Project Overview



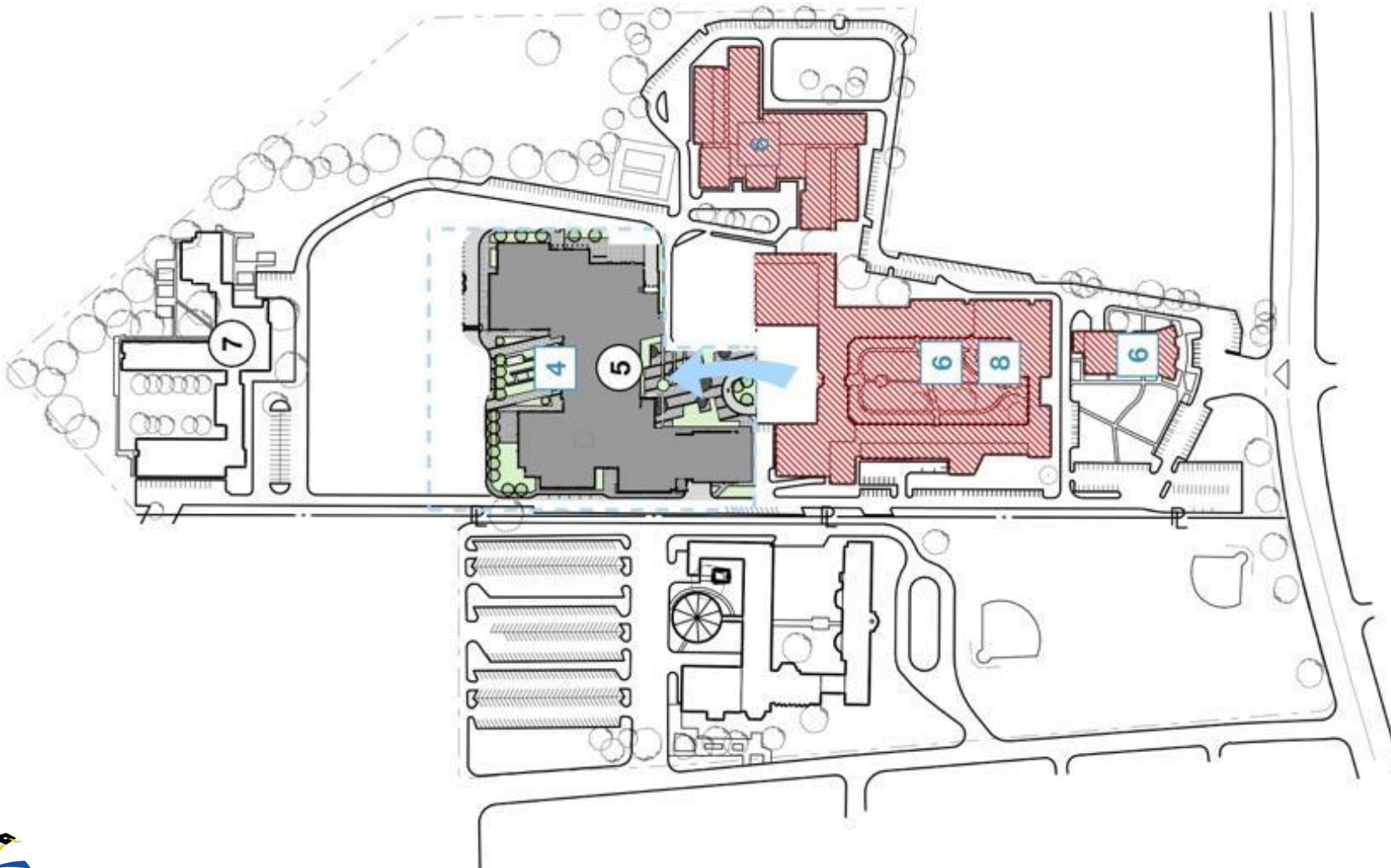
# Project Overview



## A PHASE 1

- 1 Enclose construction area
- 2 Demolish stadium, girl's gym and locker rooms & connector between CTE and high school
- 3 Students remain in high school, CTE and Annex building during phase 1 construction

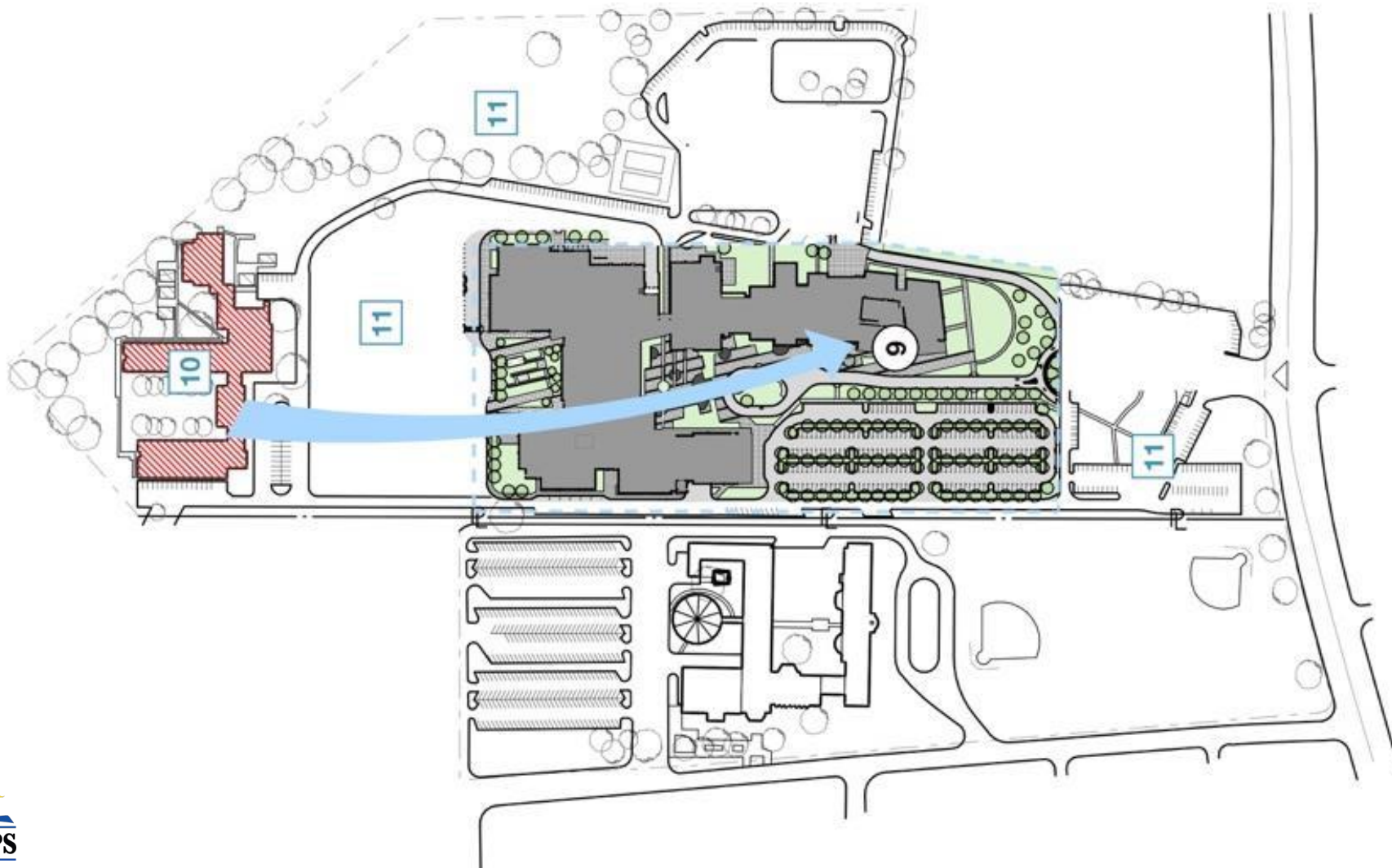
# Project Overview



## **B** PHASE 1 & 2

- 4** New high school and shared spaces building completed
- 5** High school students move out of the existing building into new building
- 6** Existing high school, CTE and auditorium is demolished
- 7** CVPA students remain in the Annex
- 8** New CVPA buildings are constructed

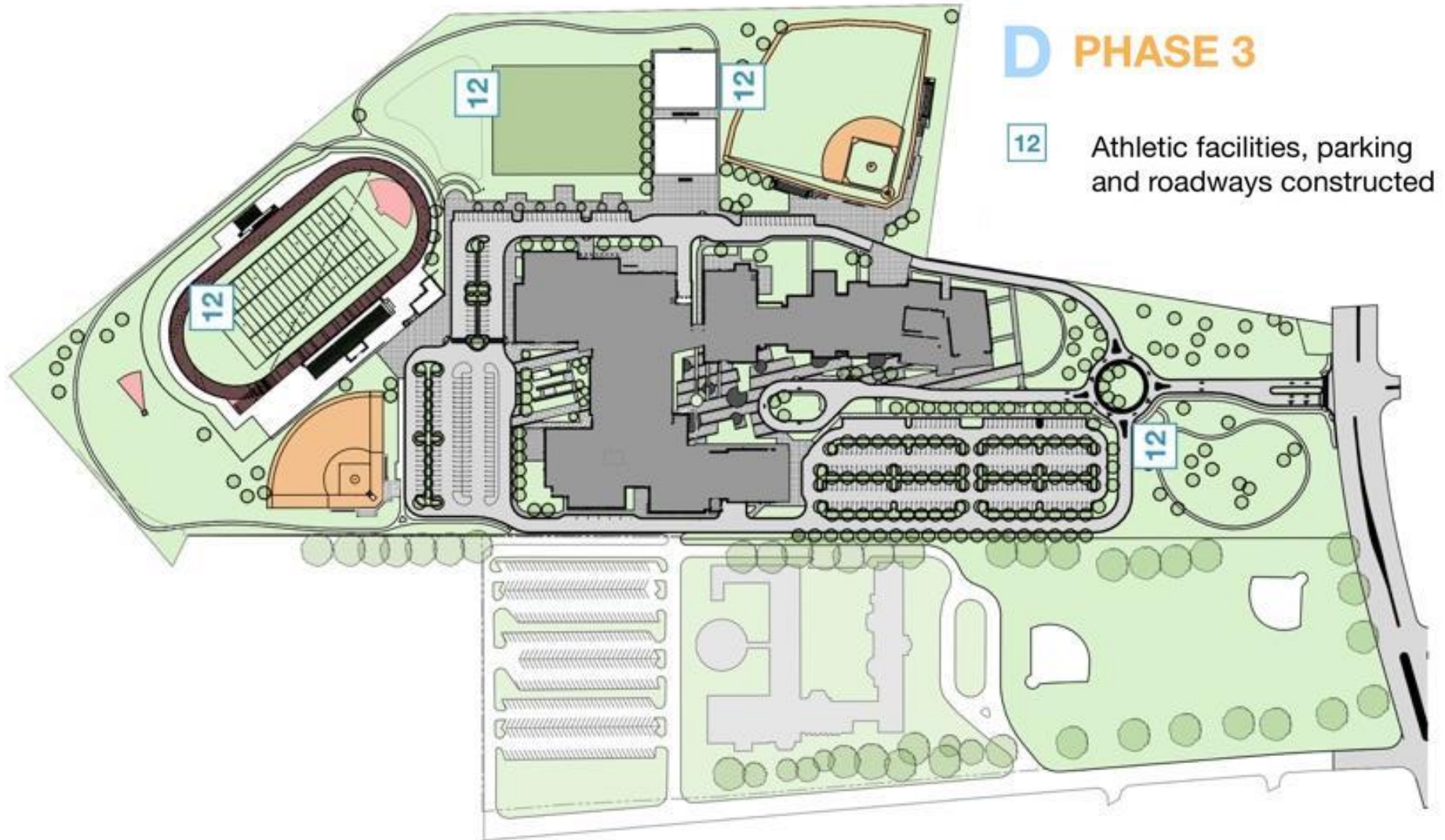
# Project Overview



## C PHASE 2 & 3

- 9 CVPA students move out of the Annex and into the new facilities
- 10 Annex is demolished
- 11 Remaining site features are removed

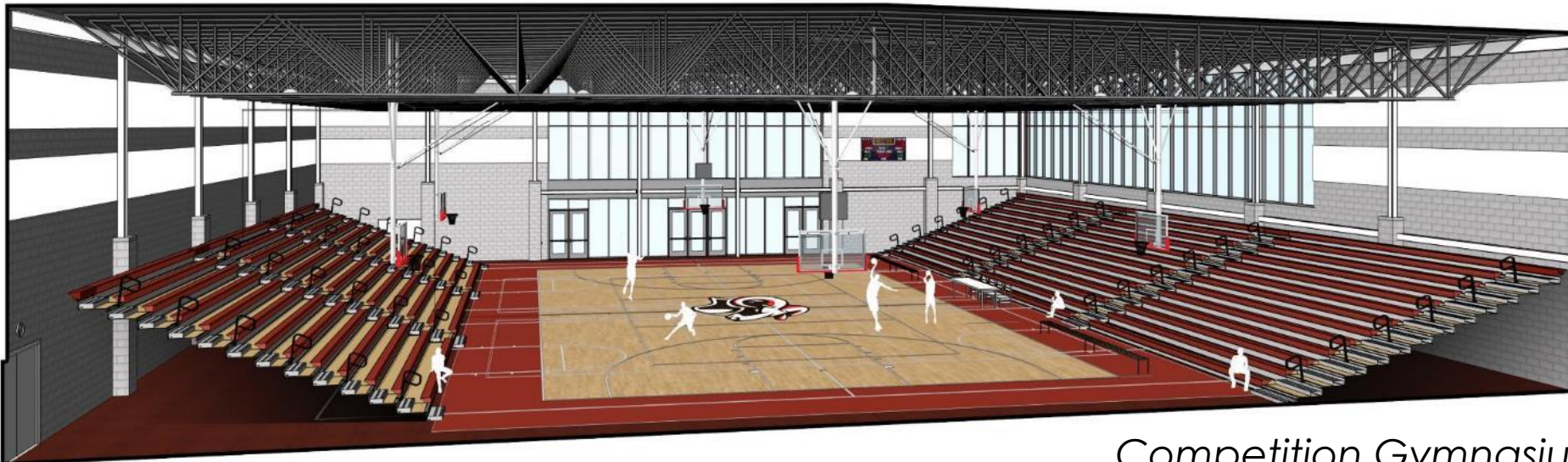
# Project Overview



# Project Overview



*Interior View @ Dining Commons*



*Competition Gymnasium*



# Project Overview

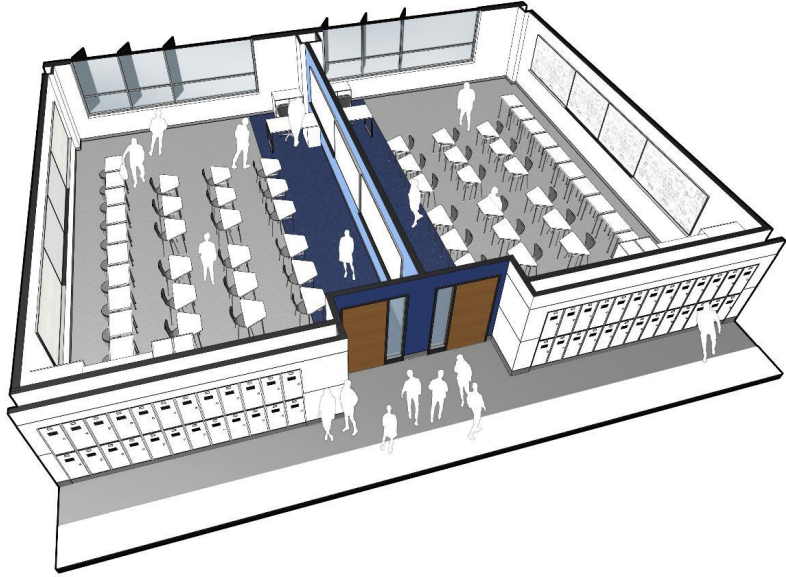


*Media Center*



*High School Auditorium Lobby*

# Project Overview

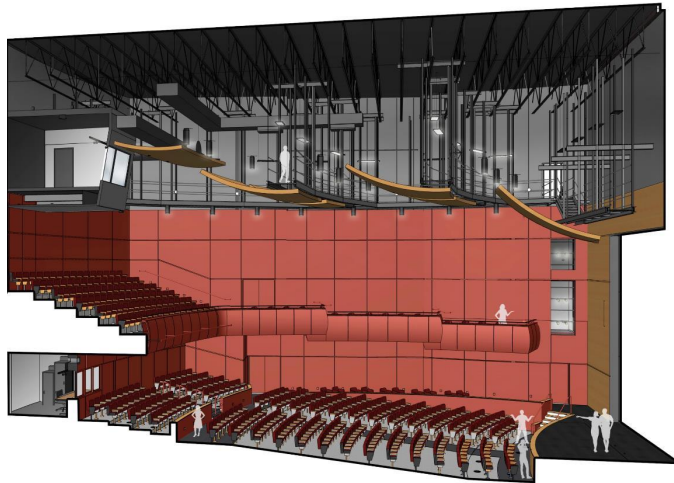


*Typical Classrooms*

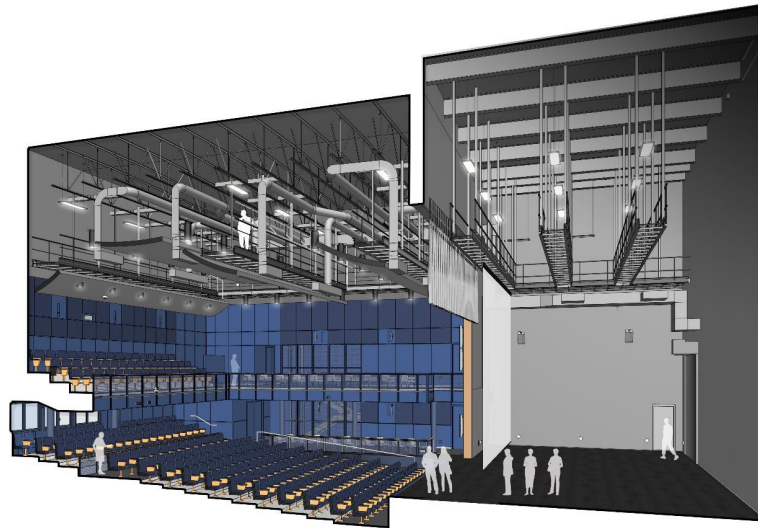
*Academic Commons*



# Project Overview



*High School Auditorium*



*Teaching Theater*



*Recital Hall*

# Project Overview



# Project Overview



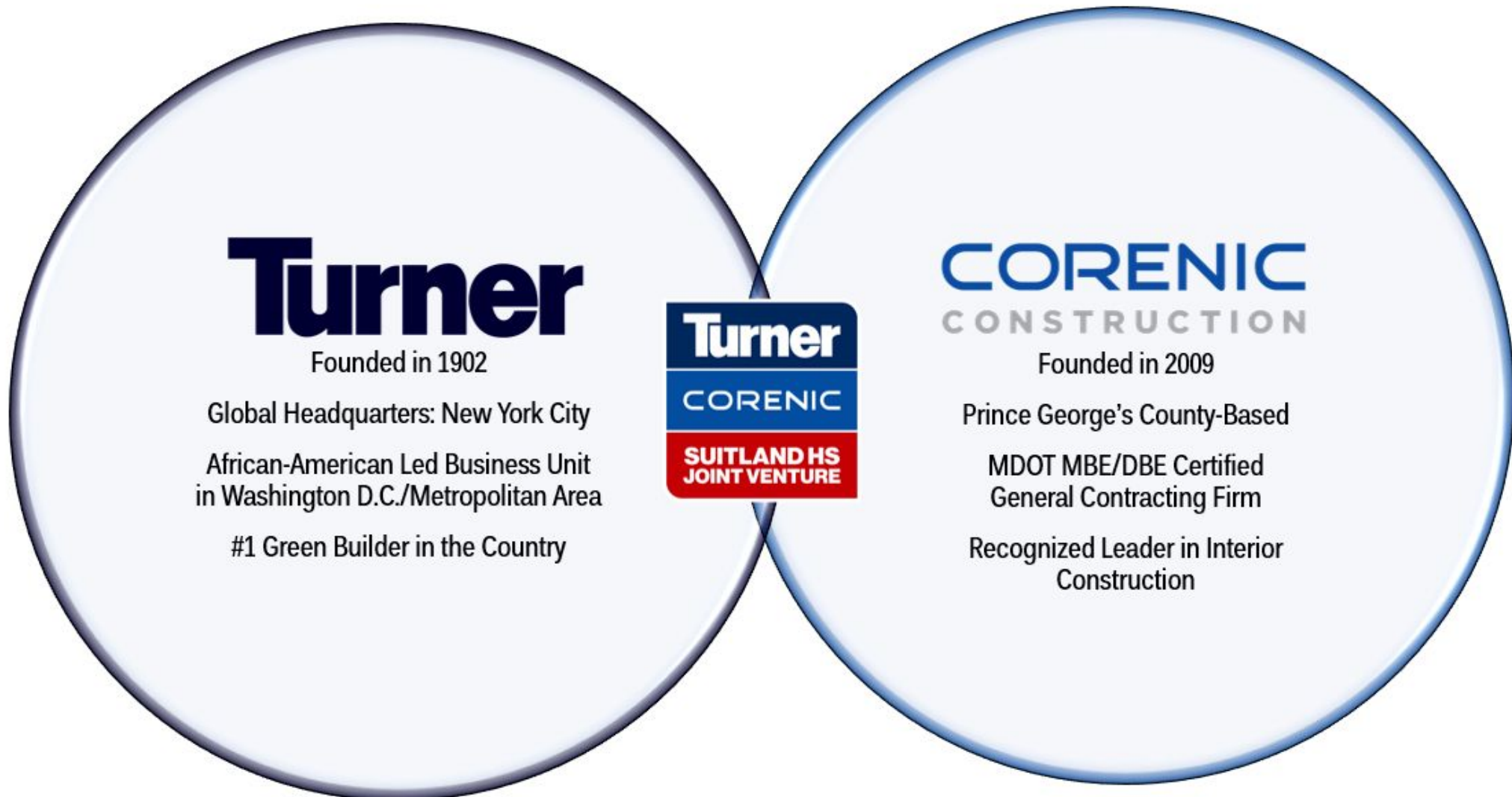
# Project Overview



# Project Overview

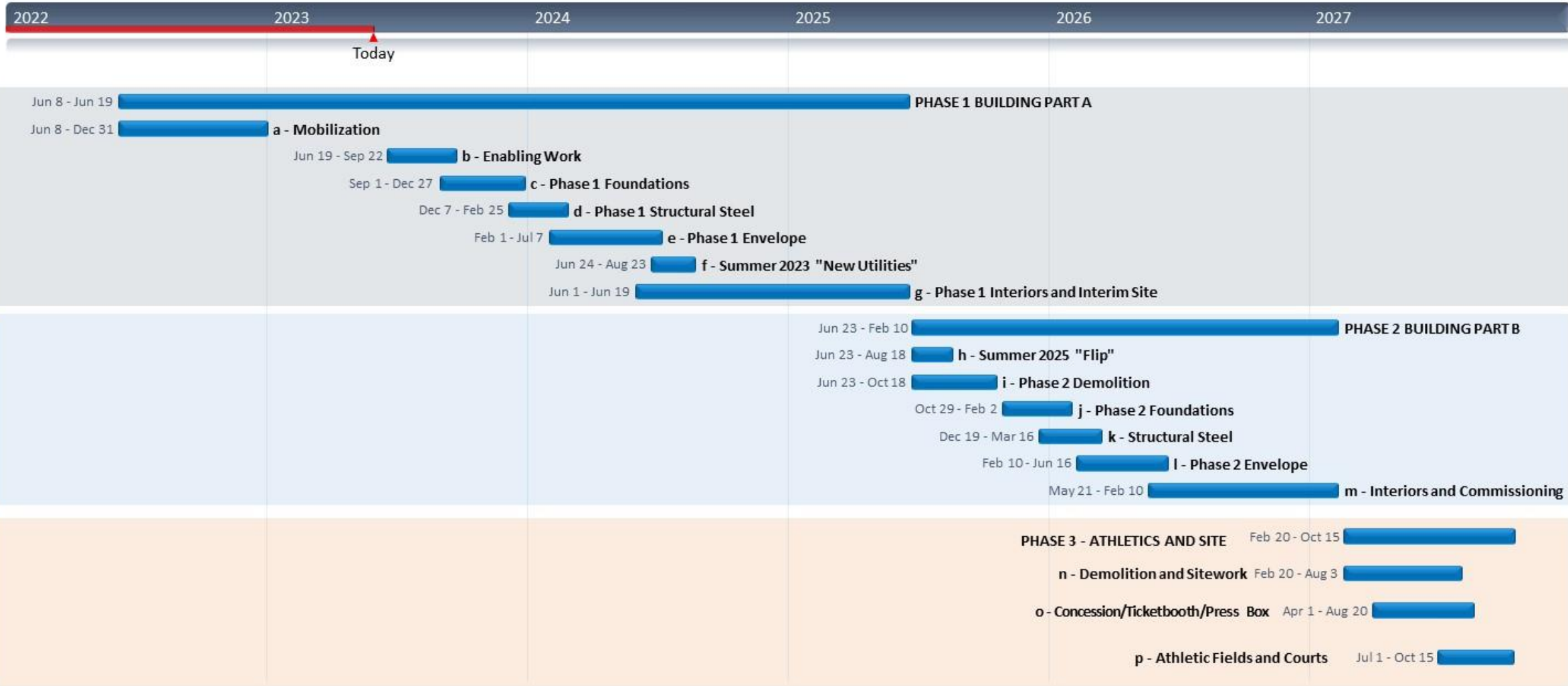


# Construction Update

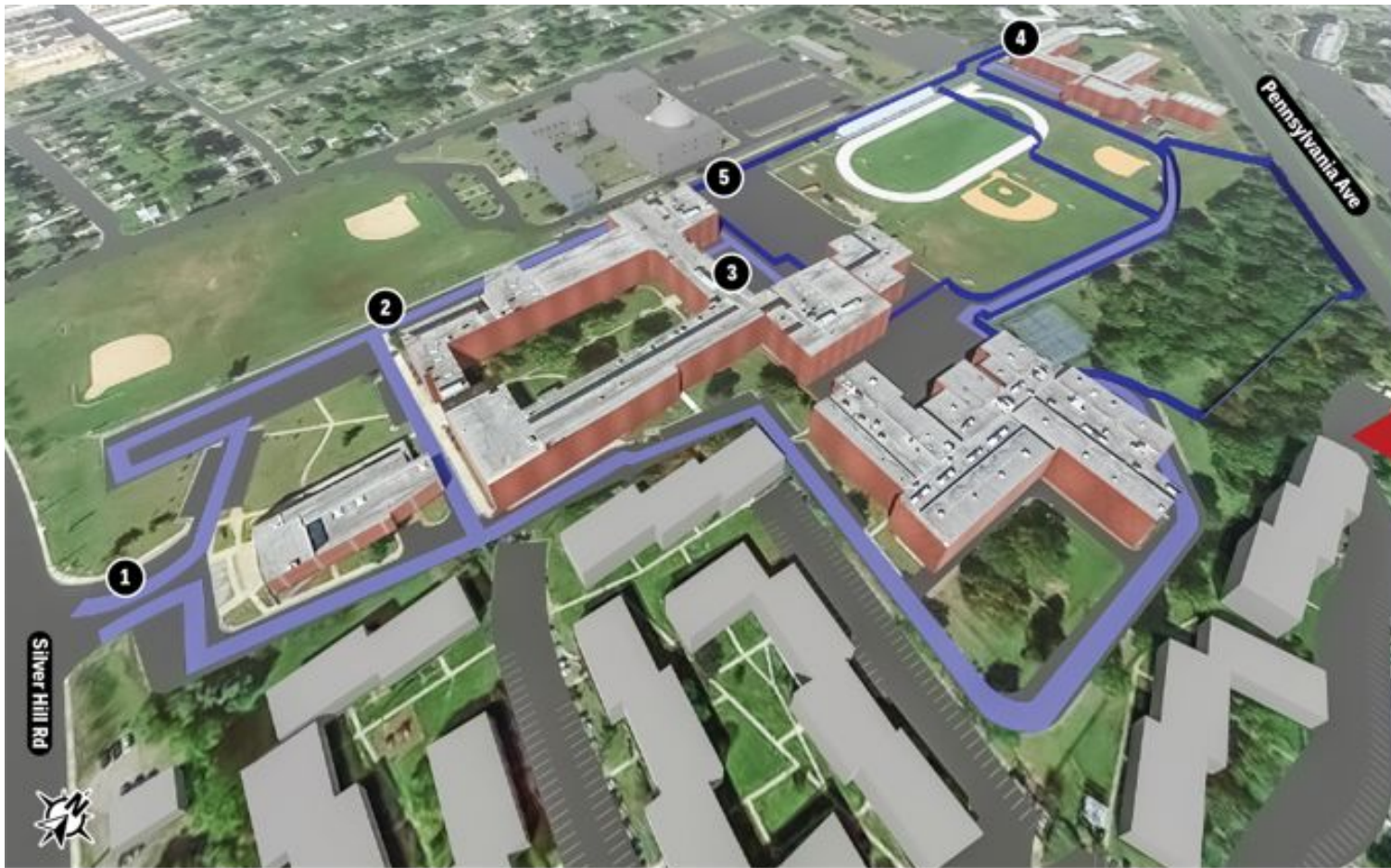




# Construction Update



# Construction Update: Phase 1 Overview



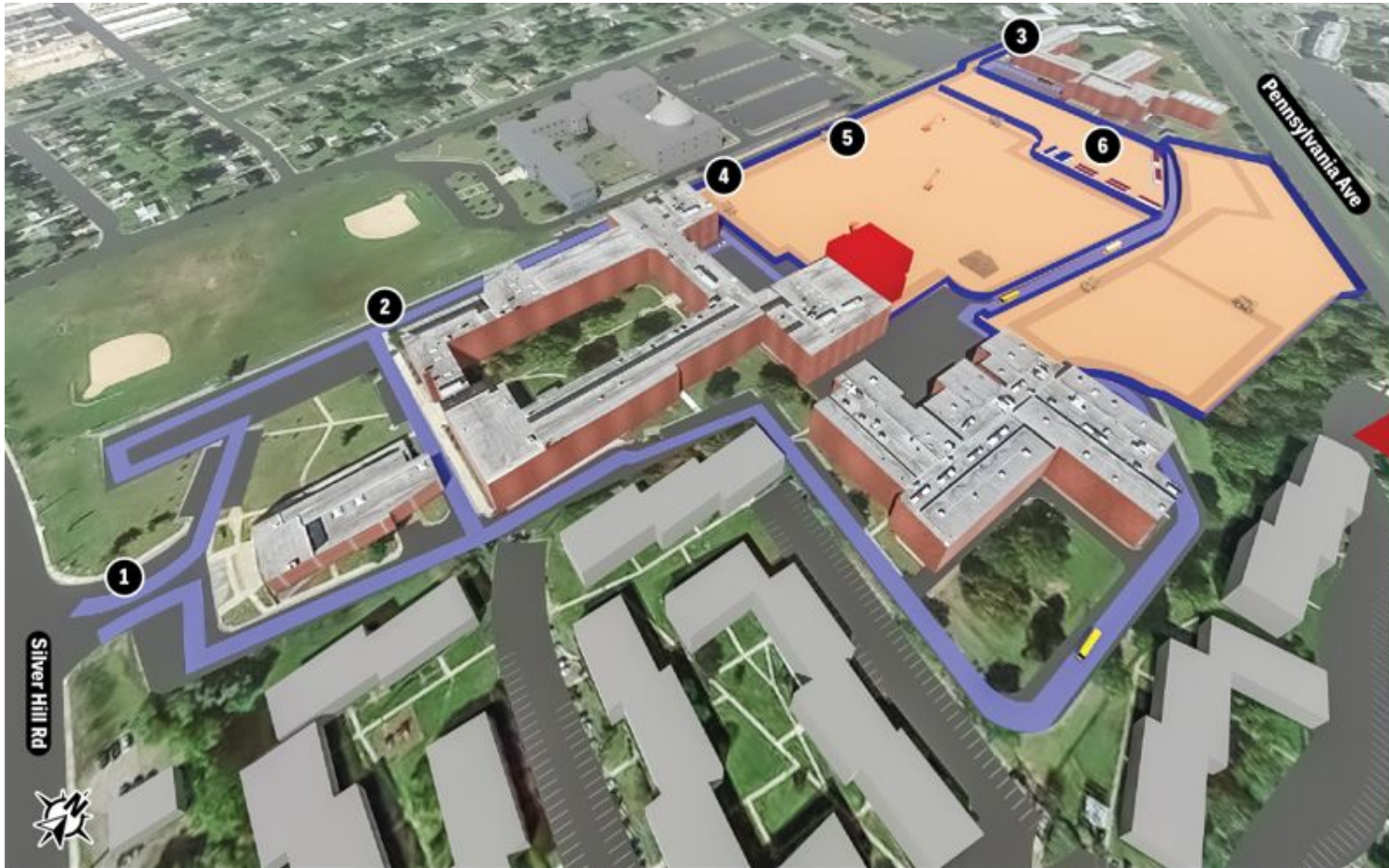
## KEY ACTIVITIES

- Establish Site office. Site Utility Investigations
- Site Surveys and Layout. E&S Controls
- Start clearing and grubbing
- Set up Big Room (Project Team)
- Set up Perimeter Fence, Gates and Covid-19 Procedures

## LEGEND

- 1.** School Entrance
- 2.** School Traffic Route
- 3.** Bus Staging Area
- 4.** Construction Entrance
- 5.** Construction Fence

# Construction Update: Phase 1 Overview



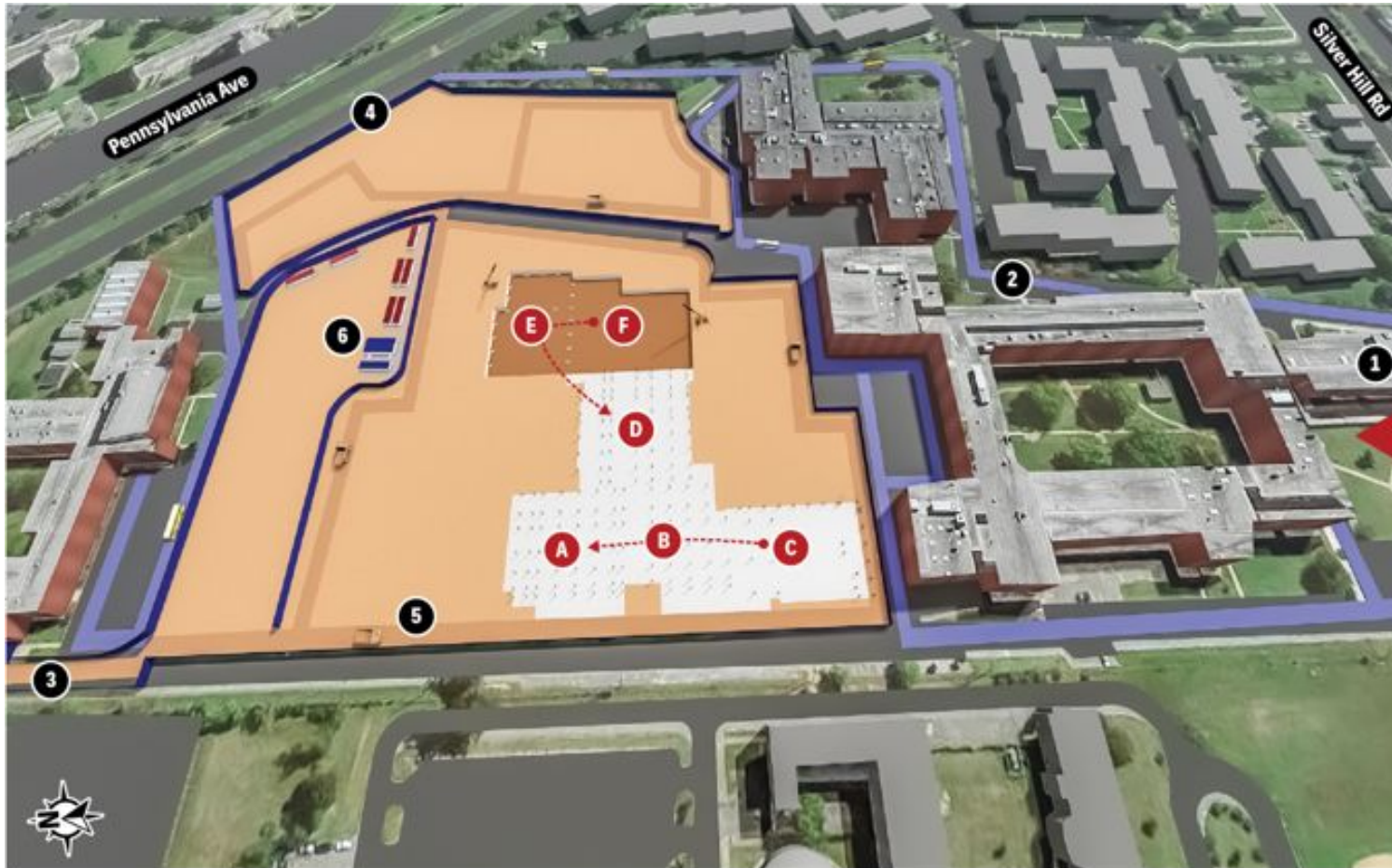
## KEY ACTIVITIES

- Construct PH 1 Storm water BMPS
- Establish temporary roads, lots, and drives
- Site Demolition at building pad
- Set up off-site Laydown Space
- Set up off-site Parking Area
- Underground Utility Locating

## LEGEND

- 1.** School Entrance
- 2.** School Traffic Route
- 3.** Construction Entrance
- 4.** Construction Fence
- 5.** Construction Traffic Route
- 6.** Construction Trailers and Construction Parking

# Construction Update: Phase 1 Overview



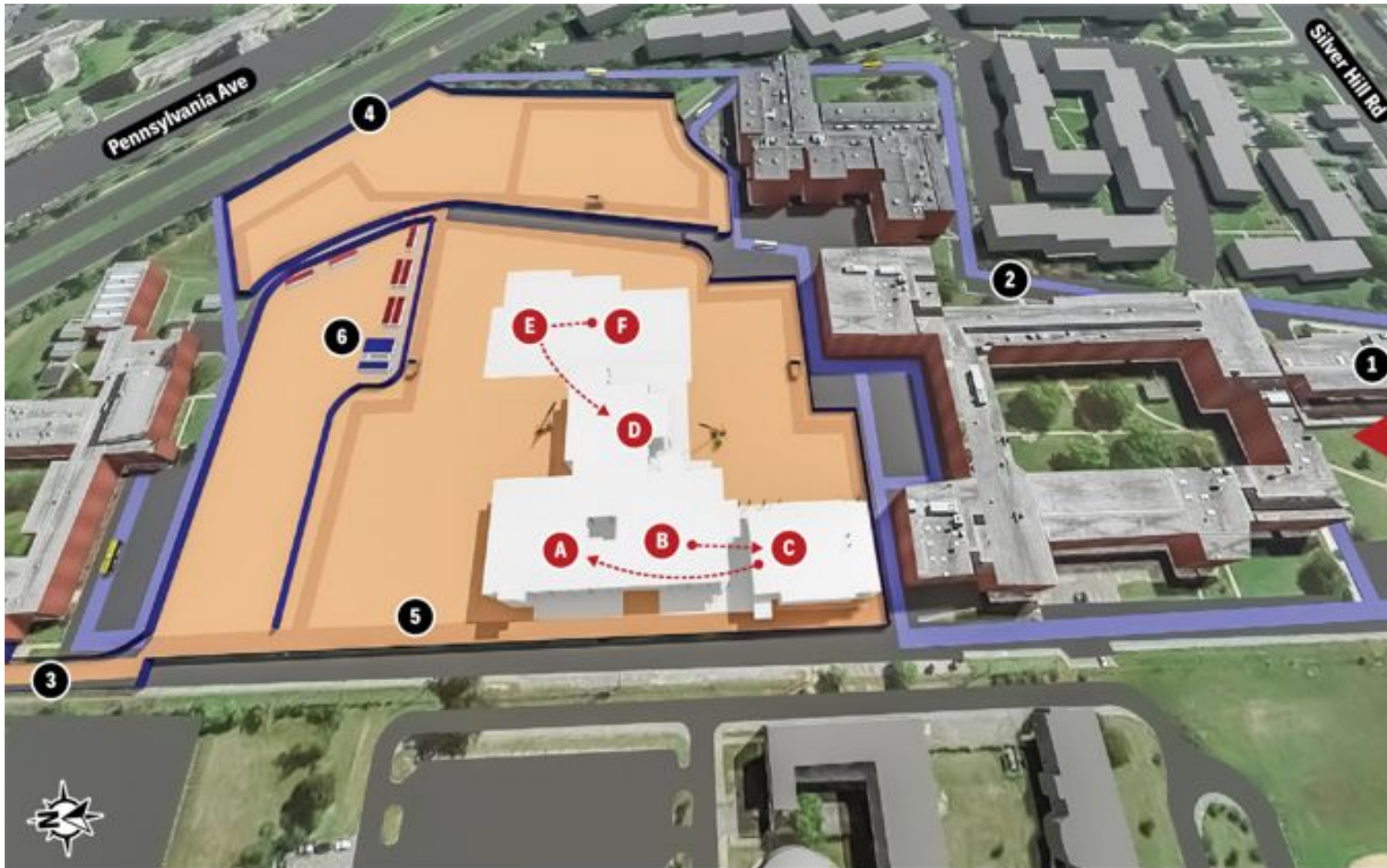
## KEY ACTIVITIES

- Foundation concrete, under slab utilities, concrete slab, steel structure
- Flow of Work C - B - A
- Flow of Work F - E - D

## LEGEND

1. School Entrance
2. School Traffic Route
3. Construction Entrance
4. Construction Fence
5. Construction Traffic Route
6. Construction Trailers and Construction Parking

# Construction Update: Phase 1 Overview



## KEY ACTIVITIES

- Erect steel structure
- Two crane locations anticipated
- Flow of Work F - E - D
- Flow of Work B - C - A

## LEGEND

1. School Entrance
2. School Traffic Route
3. Construction Entrance
4. Construction Fence
5. Construction Traffic Route
6. Construction Trailers and Construction Parking

# Construction Update

Major Completed Work	Work in Progress	Next Steps
Auxiliary Gym foundations have been demolished.	Procuring of Permits to allow for the Earthwork and Wet Utility installation.	Establish perimeter security fencing.
Backfill and grading at Auxiliary Gym has been completed.	Delivery of job progress cameras in the next 3 weeks.	Clearing and grubbing of trees between football field and Penn Ave.
New bus queuing area supporting Phase 1 has been established.	Consolidation and removal of all sports field equipment.	Establishing a temporary sediment pond
CHS/CTE Connector has been demolished to allow for the installation of new underground utilities.		Commence the installation of new Sanitary and Water lines.
Partial security fencing has been established.		

# Construction Update



# Communications & Engagement



## Communications

- Community Meetings: Spring and Fall
- Construction Notifications
- On-site Time Lapse Videos
- Capital Programs Newsletter

## Community Engagement

- Subcontractor Outreach
- Student Engagement Opportunities
- Groundbreaking and Topping Out
- Community and Dignitary Tours
- Alumni Outreach and Programming



# Communications & Engagement

## Recent Activities

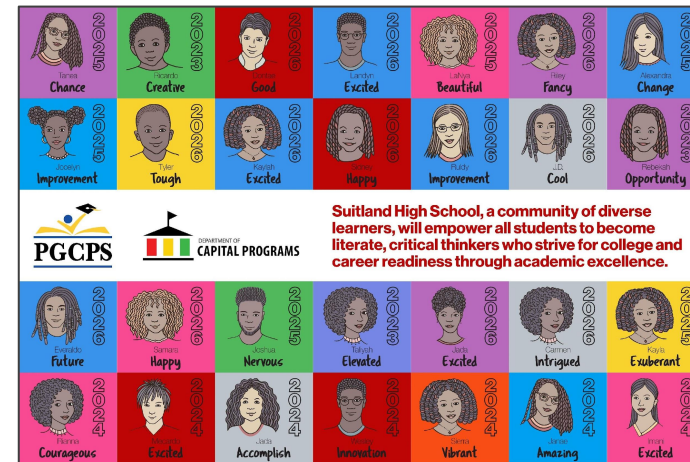
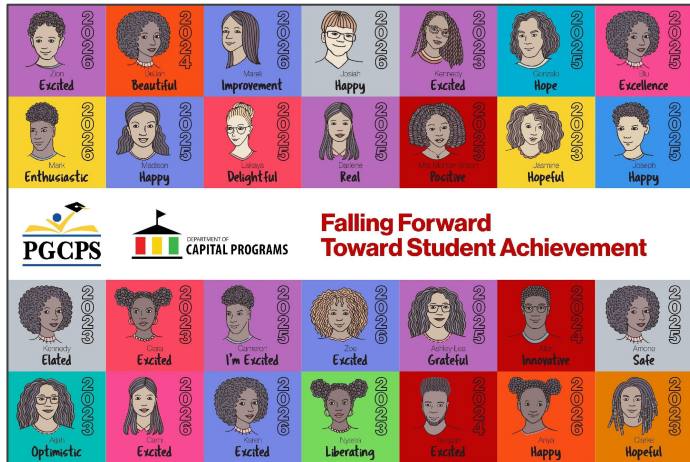
- MBE/LBE outreach at Burgers@ Apollo
  - Over 30 groups were in attendance to meet two of the Prime Contractors, Berg Demo and Kinsley Steel.
- Project Assemblies
  - Each grade level at Suitland High School received an assembly with project background and updates pertaining to their new school.
- Site Fence Design Activity
  - Students had the opportunity to design a site fence mural that will be displayed on the project perimeter
  - Resulted in 5 separate designs.

## Upcoming Activities

- MBE/LBE Outreach Event slated for late June, targeting partnerships with Prime Contractors in Mechanical (Shapiro & Duncan) and Electrical (Mona).
- More information to be announced!

# Communications & Engagement

## Site Fence Designs



## Q&A

- Please type your questions/comments in the Q&A area of Zoom.
- Questions and answers from this town hall will be posted on the Suitland HS project page at [www.pgcps.org/cip](http://www.pgcps.org/cip).
- If you have additional questions, please email them to [capital.programs@pgcps.org](mailto:capital.programs@pgcps.org).



# Thank You!

To submit additional questions and to view today's presentation, visit [www.pgcps.org/cip](http://www.pgcps.org/cip).