



Creative Collaboration  
Sustainable Solutions  
Engaging Environments

**Glenridge Middle School**  
**Project Planning Committee Meeting #1**  
July 24, 2018

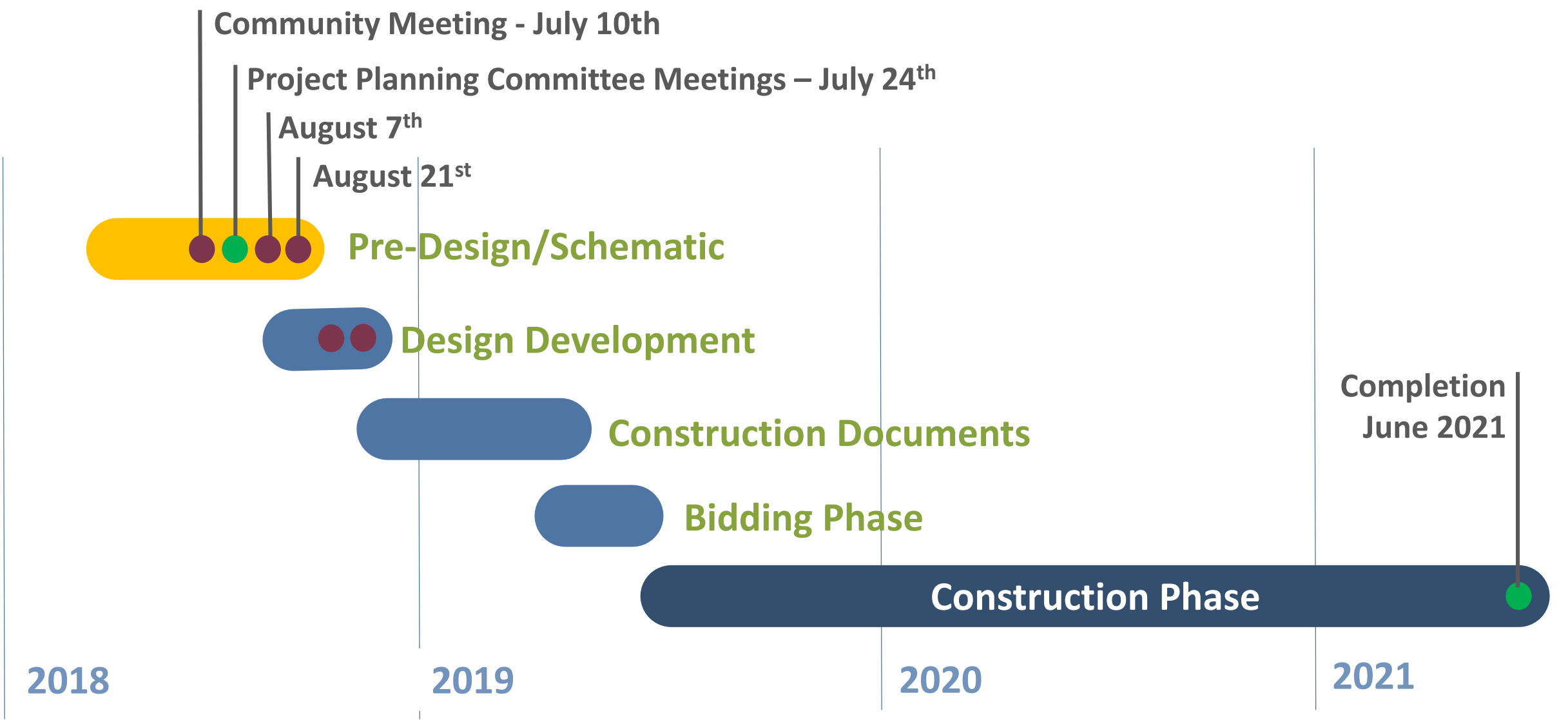


## Today's Agenda

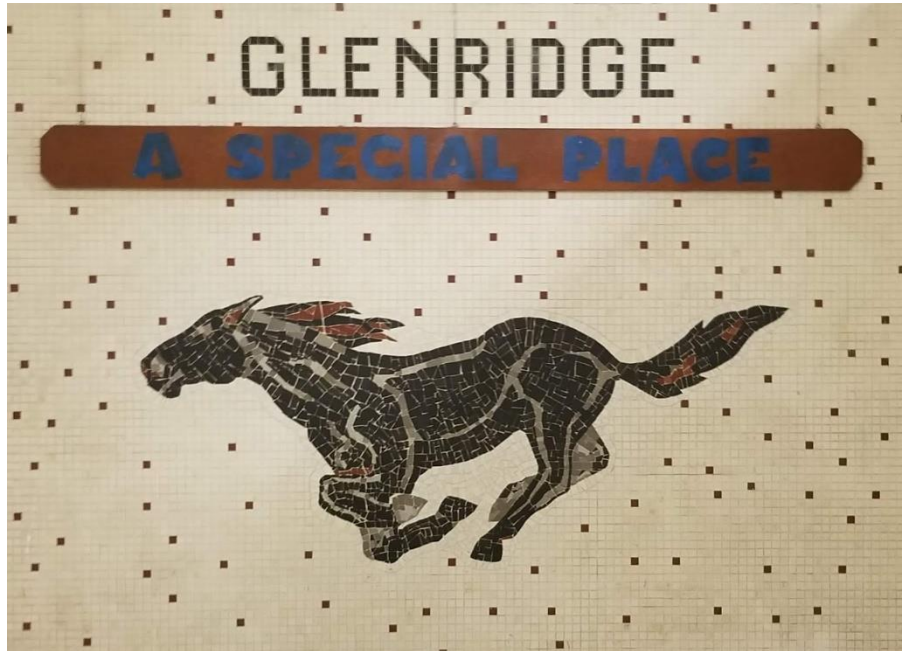
1. Welcome 5 min
2. Recap / Site Analysis 10 min
3. Review Concepts 10 min
4. Model Play 45 min
5. Share Back 15 min
6. Next Steps 5 min

Q+A

# Project Schedule



# What We Learned Last Time



**Q1** I WANT TO MAKE MIDDLE SCHOOL A SUCCESS!  
 SPACE FOR MOVEMENT, INTERACTED THROUGH CLASSROOMS & SEEMED CHALLENGING FOR CHILDREN WHO NEED ACTIVE & NOT PASSIVE LEARNERS. *Exploration*

**Q1** Questions -  
 1. I'm concerned about the impact. What is the impact in my neighborhood with this project?  
 2. I would like to see more open space sharing with the park, pond.

**Q1** Community having pride in the school, easy walkable access to school and unobstructed vehicle access to school.

**Q1** Laundry Mat. Research shows that studies with poor attendance increases an average of 16% for 90-95%. We need a laundry room!

**Q2** Cultural Diversity Adequ. Mtg.  
 → Suburban Area ~~area~~ with transit oriented residents

**Q1** A cohesive integration with the existing physical & its novel feature.

**Q1** Diversity, ~~nature~~ Nature parks

**Q3** *Methods*  
 Come of the crime from the other schools will follow them through the streets into our community!

**Q1** How can THIS N.S. enhance comm?  
 - ATTRACTIVE, OPEN BUILDING, TREES & LANDSCAPING.  
 - PARKING LOT NOT MAIN FEATURE

**Q1** Diversity - Arts  
 Maybe a Mural design at the School.  
 → ADA Compliance

**Q1** Space for parental and community engagement, pride in facility, nearby students able to walk to school for increased sense of community.

**Q1** What current Models in the County have you exploring?

# Stakeholder Engagement



*What one thing  
would make your  
new middle  
school a success?*

*What one thing  
would make your  
new middle  
school a success?*

*1*

- **Open to community use**
- **Cohesive integration with existing park**
- **Access to nature**
- **Access to indoor/outdoor spaces**
- **Don't remove park amenities, enhance them**
- **Easy walkable access and vehicle access**
- **Inviting to students, parents and staff**
- **Welcoming and open to community**
- **Space for movement + exploration**
- **Community resources/laundry room**

# Stakeholder Engagement



*What is unique about your community that should be considered in this project?*

*What is unique about your community that should be considered in this project?*

2

- Woodlawn is designed as a safe haven
- Diverse, intergenerational community
- Many changes from purple line impact
- Suburban area with transit-oriented residents
- Traffic patterns and road access
- Nature, parks, safe pathways
- Small neighborhood feel



# Stakeholder Engagement



*How can this new middle school help to enhance your community?*

*How can this new middle school help to enhance your community?*

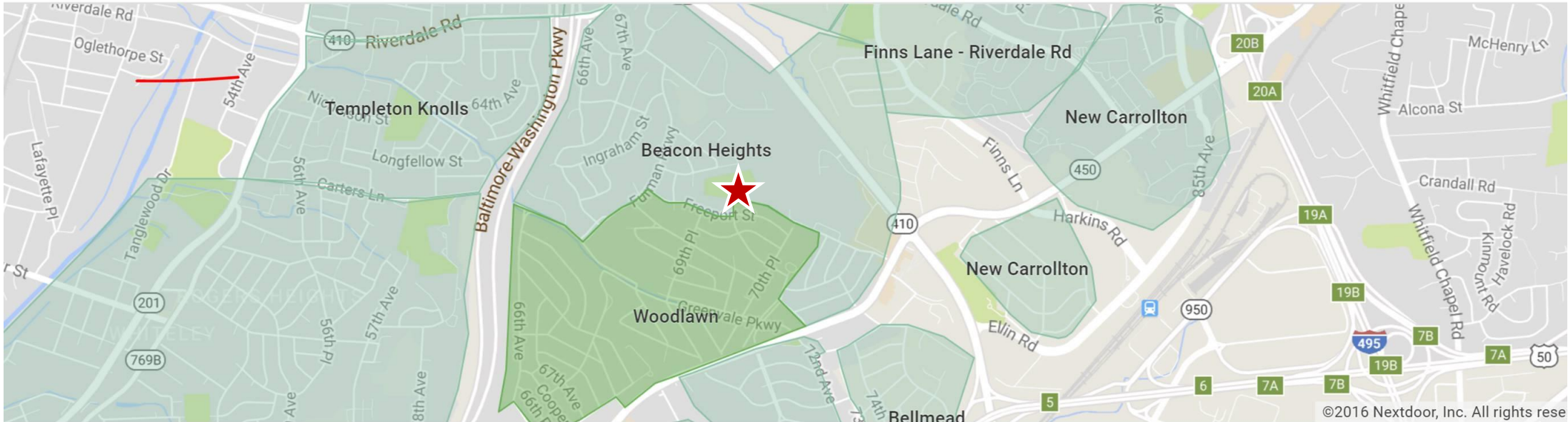
3

- Function as a community hub
- Open + accessible to the community
- Attractive, open building
- Helping teens receive the help they need to achieve their goals
- Space for parent + community engagement
- Pride in the new facility
- Integration of special education students
- Nature/Education/Health + Wellness
- Tree + landscaping, parking lot not main feature

*The new  
Glenridge  
Middle  
School will...*

1. Provide spaces and resources for teens to thrive and achieve their goals
2. Become a community hub that is open and accessible to its diverse neighborhood
3. Integrate with its Glenridge Park setting and provide opportunities to connect with nature
4. Be welcoming and inviting to all students, parents, staff and neighbors
5. Enhance a sense of pride in the community

Maryland / Hyattsville / Woodlawn



## Why neighbors love Woodlawn

Freeway access

Peaceful

Parks

Family friendly

Pleasant

Safe

Trees

Neighbors

Sidewalks

Location

Gathered from Nextdoor members

# Project Goals + Guiding Principles



...a school in the park

# Glenridge Park Site Analysis



## SITE OBSERVATIONS

1. BALD EAGLE NEST
2. PLAYGROUND AND PAVILION
3. ATHLETIC FIELD AND BASEBALL DIAMOND
4. BASKETBALL AND TENNIS COURTS
5. LOWER ENTRANCE AND PARKING LOTS
6. UPPER ENTRANCE AND PARKING LOT
7. GAZEBO AND OPEN SPACE

### WILDLIFE OBSERVED:

- BALD EAGLE
- TURTLES
- GROUNDHOG
- SWALLOWS

### MAINTENANCE CONCERNS:

- Construction times restricted by bald eagle nesting
- Sloped terrain restricts lawn maintenance

### ACCESSIBILITY ISSUES:

- Parking and traffic flow restricted by other local schools
- Slopes restrict ADA accessibility to majority of the site

## LEGEND

- SITE BOUNDARY
- - - 5 MINUTE WALK FROM PARKING
- ..... VEHICULAR CIRCULATION
- WATER/DRAINAGE AREA
- PEDESTRIAN CIRCULATION
- ACTIVE RECREATION FACILITY
- TREE CANOPY
- PASSIVE RECREATION FACILITY
- ★ WILDLIFE

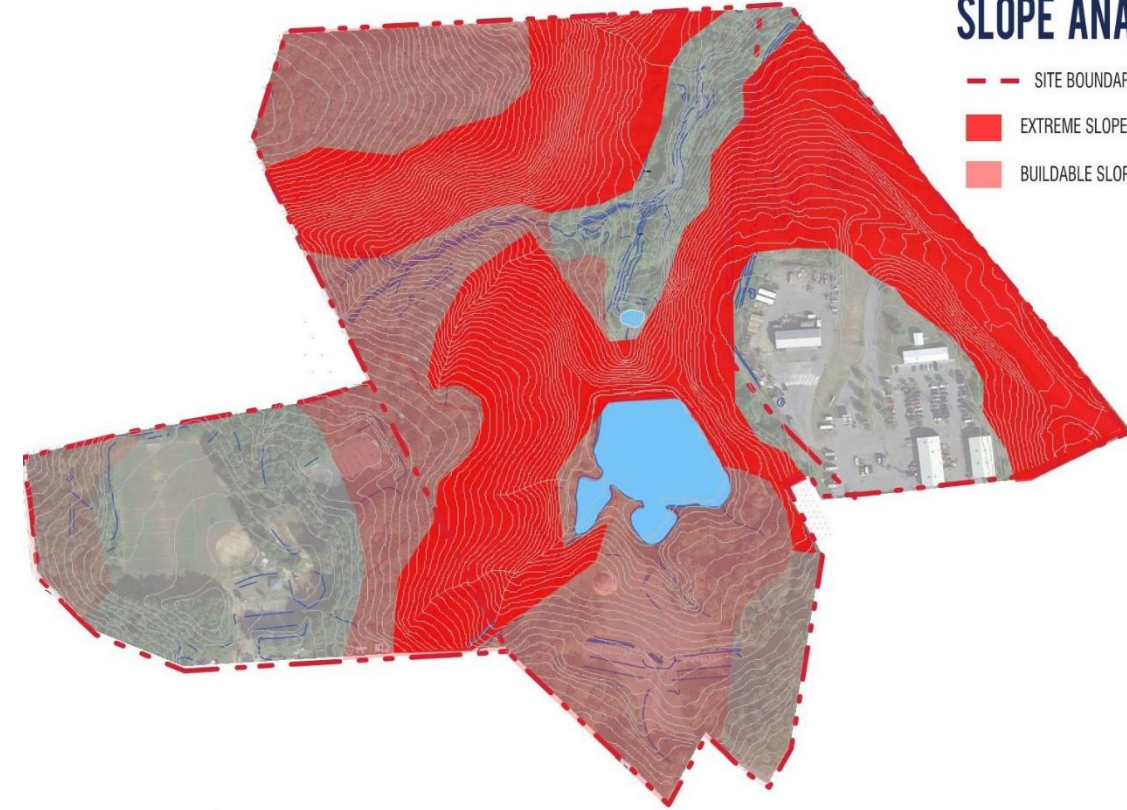
## SITE PHOTOS



# Glenridge Park Site Analysis

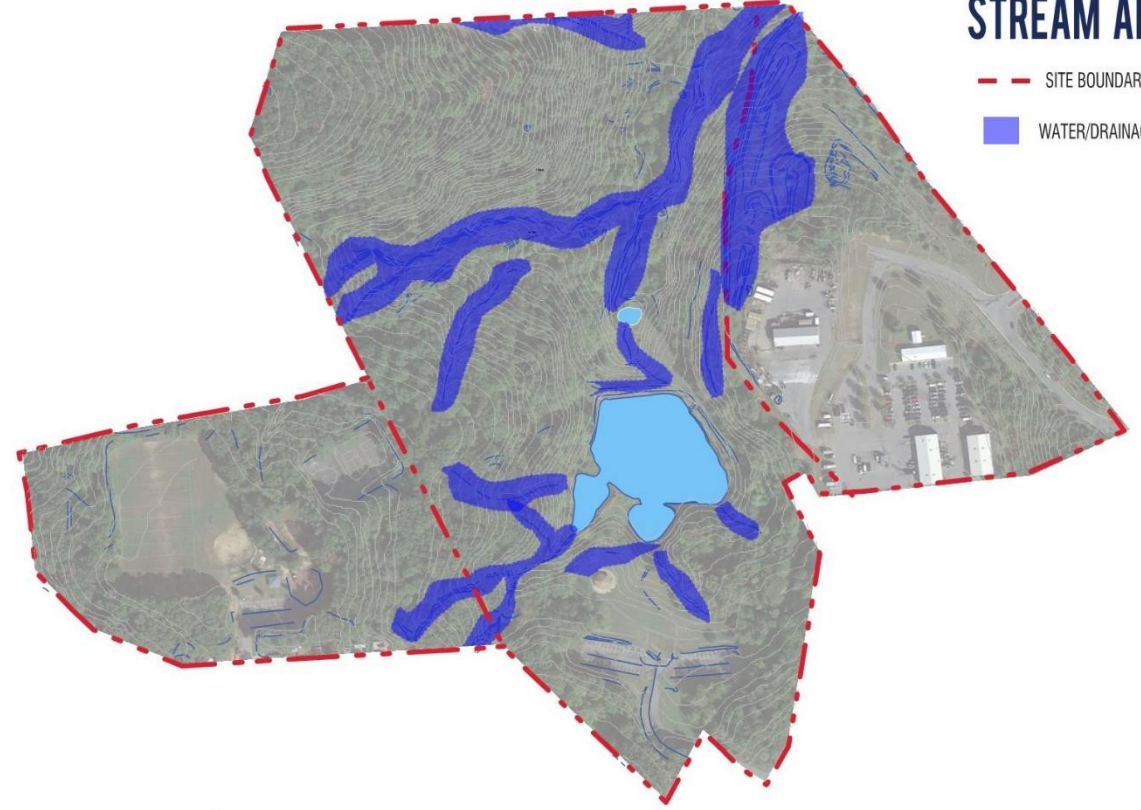
## SLOPE ANALYSIS

- SITE BOUNDARY
- EXTREME SLOPES (15-25%)
- BUILDABLE SLOPE (5-15%)



## STREAM ANALYSIS

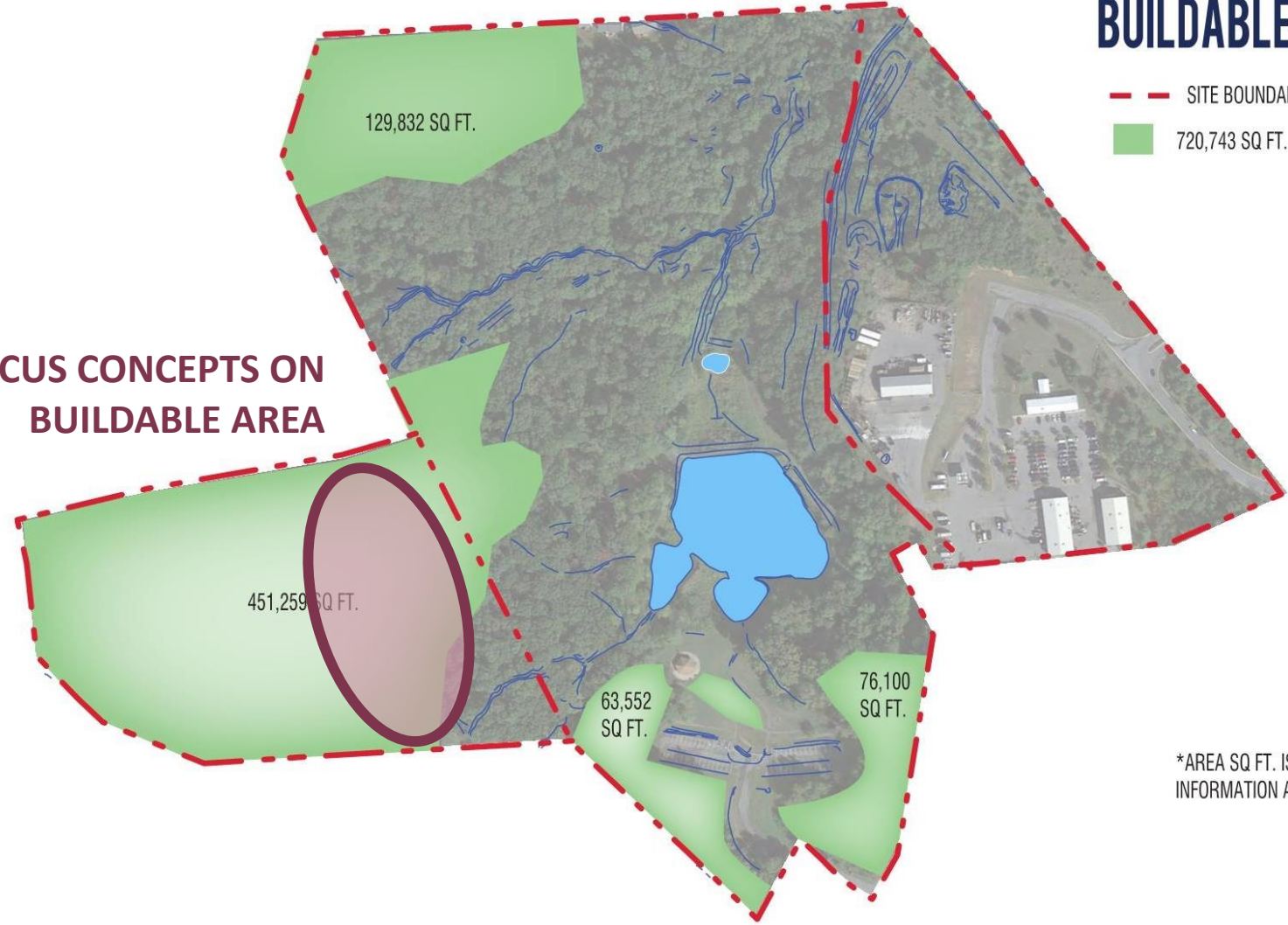
- SITE BOUNDARY
- WATER/DRAINAGE AREA



# Glenridge Park Site Analysis

## BUILDABLE AREA ANALYSIS

**FOCUS CONCEPTS ON  
BUILDABLE AREA**



--- SITE BOUNDARY

■ 720,743 SQ. FT. AVAILABLE SITE AREA

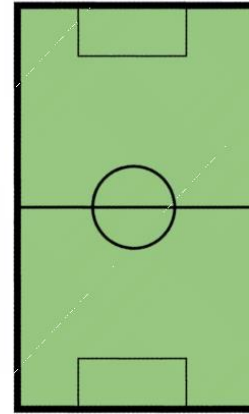
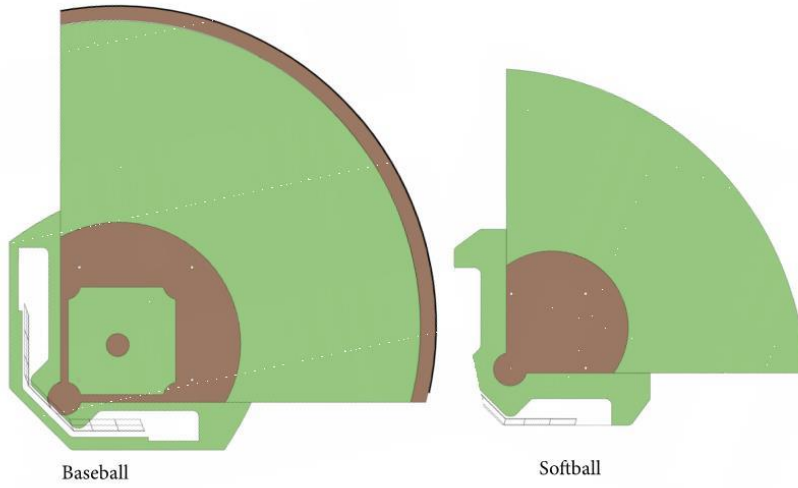
\*AREA SQ. FT. IS AN ESTIMATE BASED ON CURRENT INFORMATION AND IS SUBJECT TO CHANGE.



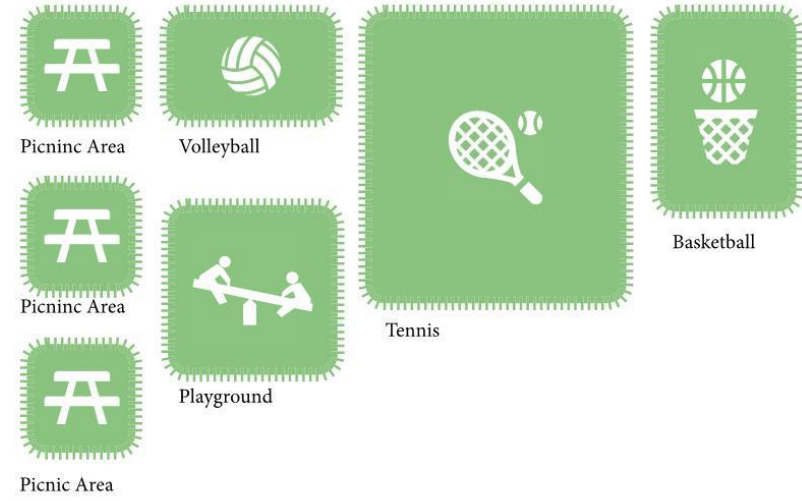


# Kit of Parts - Site

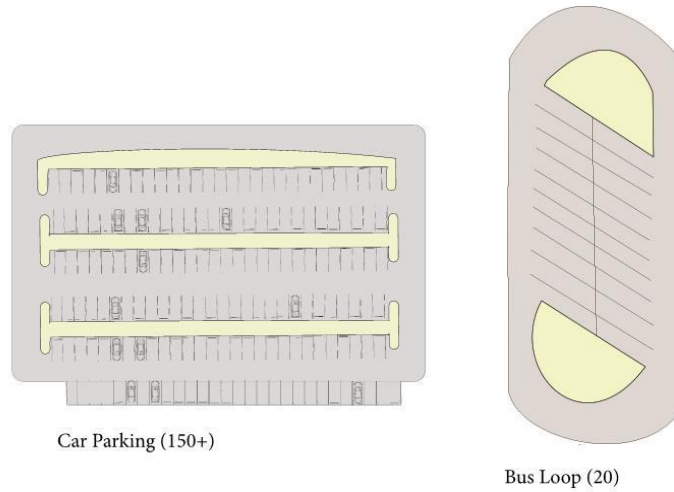
## MIDDLE SCHOOL ATHLETICS



## PARK PROGRAM



## CARS AND BUSES



## MIDDLE SCHOOL PROGRAM



# Glenridge Site

## Proposed Concepts - Overview



1 BAR



2 CASCADE



3 CLUSTER

# Design Concepts



**1** BAR



**2** CASCADE



**3** CLUSTER

<b>SITE ACCESS</b>	Bus – Gallatin Car - Flintridge	Bus – Flintridge Car - Gallatin	Bus – Flintridge Car - Flintridge
<b>MASSING</b>	Compact footprint 4-story bar	1-story public + 3-story academic	2-story public + 3-story academic
<b>ACADEMIC WING</b>	1 floor per grade	1 floor per grade	3 clusters per grade
<b>COMMON SPACES</b>	Separate Dining and Media	Terraced Dining and Media	Combined Dining and Media

# Glenridge Site

## Scheme 1 | Bar Overall



# Glenridge Site

Scheme 1 | Bar  
Level 0

## + PROS

- Compact footprint minimizes park impact
- Gym located on tennis court pad
- Tall dining/music volumes into grade
- Efficient 3-story academic wing
- Separate entrances for cars + busses

## - CONS

- 4-story building: access + supervision
- Solar orientation not ideal



# Glenridge Site

Scheme 1 | Bar

Level 1



# Glenridge Site

Scheme 1 | Bar

Level 2





# Glenridge Site

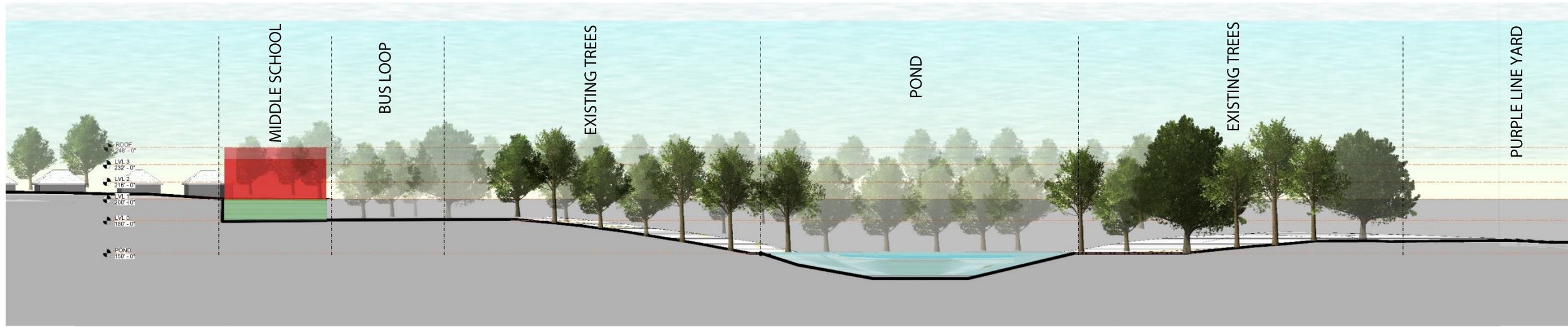
Scheme 1 | Bar

Level 3



# Glenridge Site

## SECTION | Bar



Section 2  
1" = 30'-0"

# Glenridge Site

## Scheme 1 | Bar

### Precedents



# Glenridge Site

## Scheme 2 | Cascade

### Overall







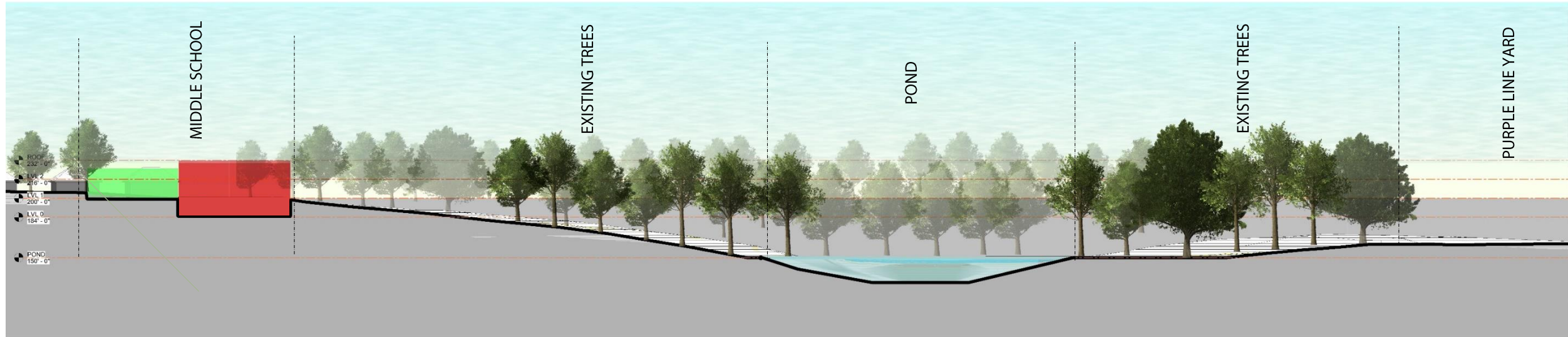
# Glenridge Site

Scheme 2 | Cascade  
Level 2



# Glenridge Site

## SECTION | Cascade



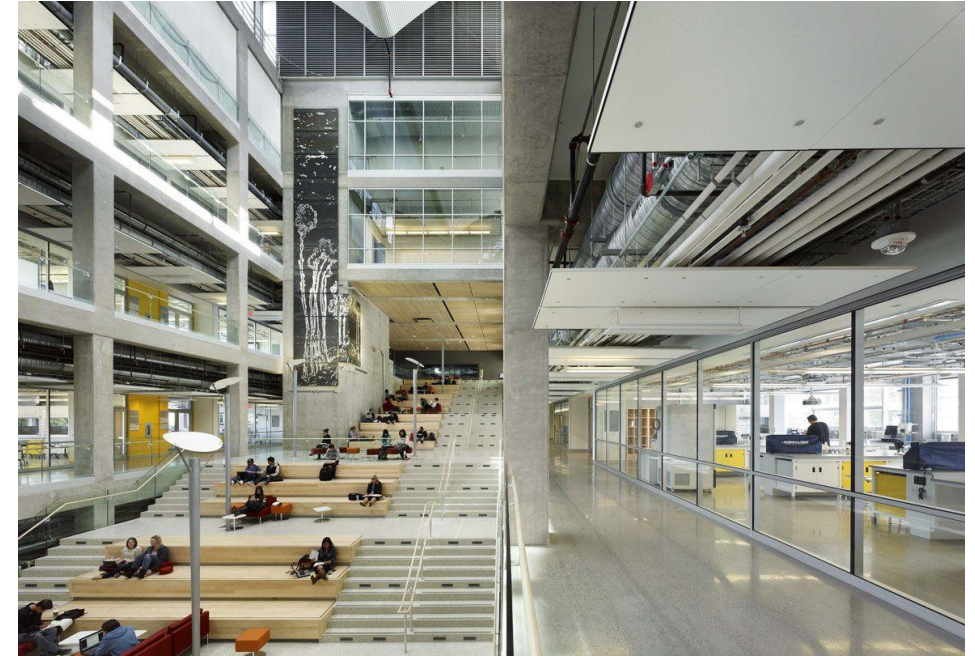
Section 2  
1" = 30'-0"



# Glenridge Site

## Scheme 2 | Cascade

### Precedents



# Glenridge Site Scheme 3 | Cluster Overall



# Glenridge Site

Scheme 3 | Cluster  
Level 0

## + PROS

- Academic clusters oriented with contours
- Accommodates larger parking area
- Central combined dining/media commons
- Views from academic wings

## - CONS

- Single site entrance for cars + busses
- Gym lower level than field
- Academic wing proximity to commons



# Glenridge Site

Scheme 3 | Cluster  
Level 1



# Glenridge Site

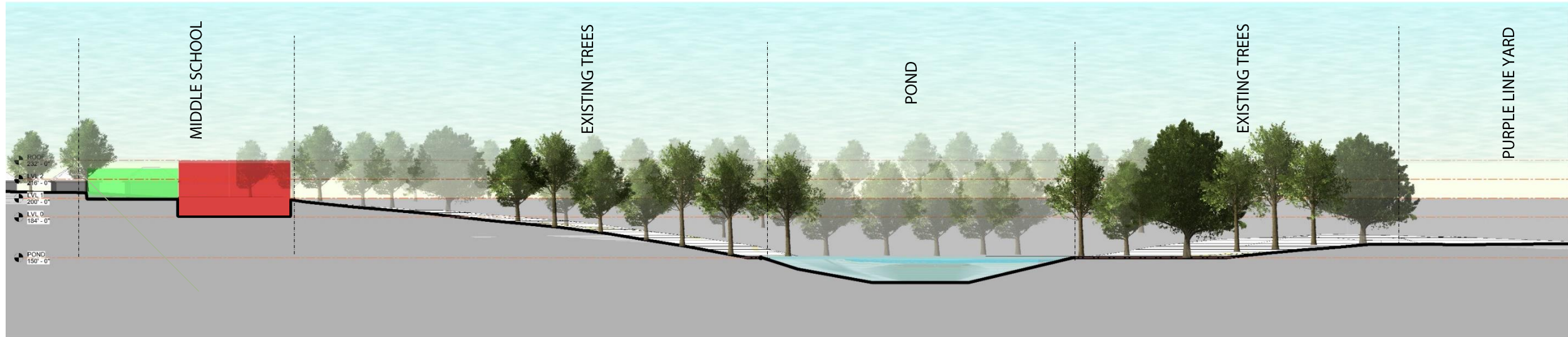
## Scheme 3 | Cluster

### Level 2



# Glenridge Site

## SECTION | Cluster



Section 2  
1" = 30'-0"

# Glenridge Site

## Scheme 3 | Cluster

### Precedents



# Glenridge Site

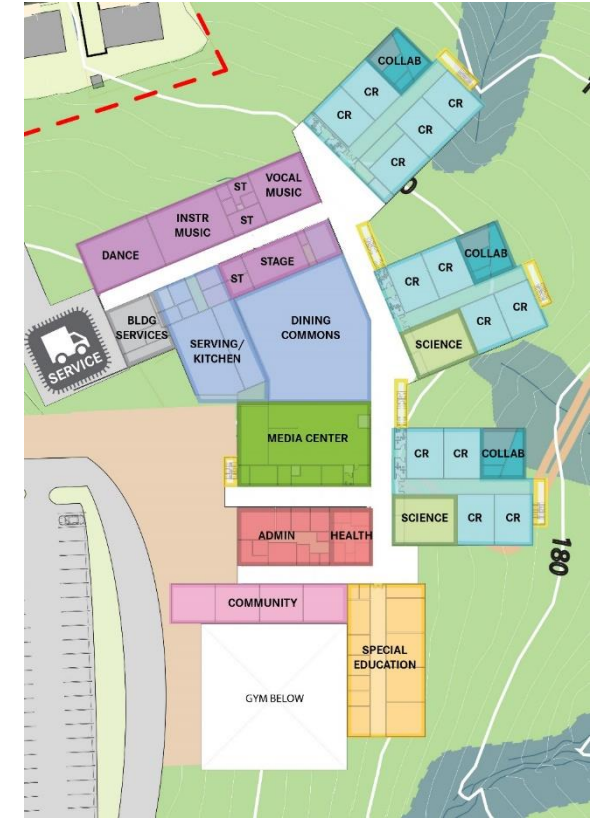
## Proposed Concepts - Review



1 BAR



2 CASCADE



3 CLUSTER



A serene landscape featuring a calm pond in the foreground, surrounded by tall reeds and grasses. In the background, a green lawn leads to a wooden gazebo, with a dense forest of bare trees under a soft, overcast sky.

**Q+A**

**Any questions?**