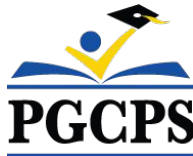




PGCPS . **ENGAGE . DESIGN . BUILD . COMMUNICATE** . PGCPS



DREW-FREEMAN MIDDLE SCHOOL

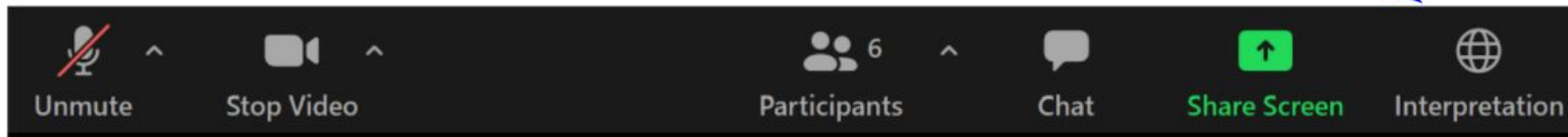
CONSTRUCTION UPDATE MEETING | MAY 4th, 7:00 PM



PRINCE GEORGE'S COUNTY
EDUCATION & COMMUNITY PARTNERS

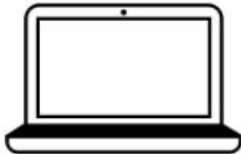
SERVICIOS DE INTERPRETACIÓN *INTERPRETING SERVICES*

La interpretación simultánea
está disponible en español.
*Simultaneous interpretation is
available in Spanish.*



SERVICIOS DE INTERPRETACIÓN

INTERPRETING SERVICES



On a computer-- At the bottom of the screen will be an interpretation globe. Click that globe and then select *Spanish*.

En una computadora-- En la parte baja de la pantalla habrá un globo de interpretación. Haga clic en ese globo y seleccione "Spanish."



On a mobile device-- At the bottom of the screen, tap the ellipses icon on the bottom right (...).

- Tap *Language Interpretation*.
- Tap *Spanish*.

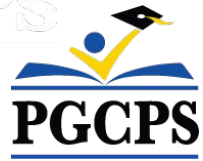
En un dispositivo móvil-- En la parte baja de la pantalla, toca el icono de elipses en la parte baja derecha (...).

- Toque *Language Interpretation*.
- Toque *Spanish*.



We value your input.

- Please type your questions/comments in the Q&A area of Zoom.
- Questions and answers from this town hall will be posted on pgcpsblueprintschools.com.



Our Commitment

PGCPS is moving swiftly to deliver safe, state-of-the-art, and sustainable learning environments for our students, teachers, and communities.

Through a three-pronged approach, traditional Capital Improvement, Staged Renovations, and the nation's first Public School P3 Design-Build-Maintain approach, otherwise known as the Blueprint Schools Program, we're on track to deliver over 25 modernized school facilities in just 10 years.



Agenda

- Team Introductions
- Construction Overview
- Operations Update
- Q&A

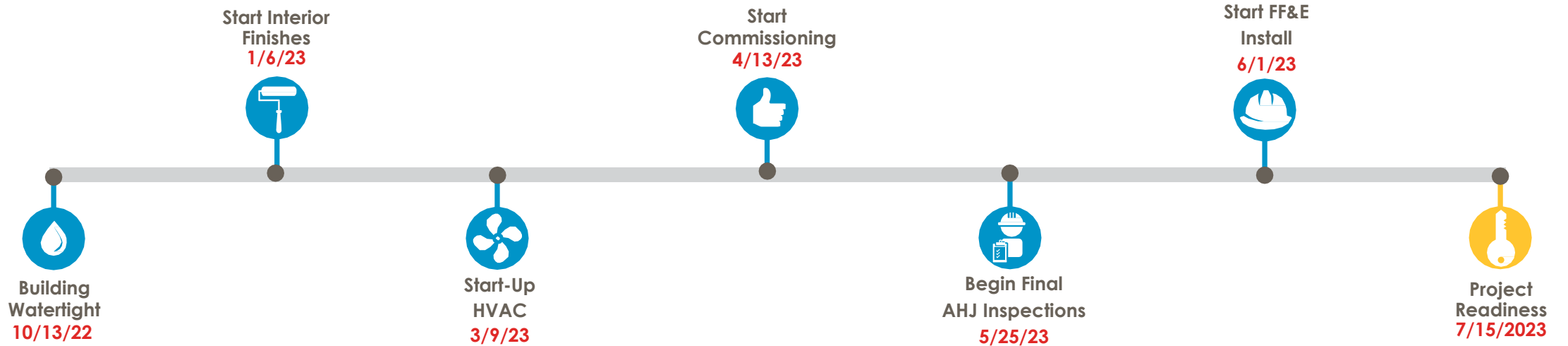


Team Introductions

- **Jason Washington**, *Director, Blueprint Schools*
- **Christian Broyles**, *Project Executive, Gilbane Building Co.*
- **Mark Blanchard**, *Project Manager, Gilbane Building Co.*
- **Amber Brown**, *Project Manager, Brailsford & Dunlavy*
- **Natasha Kyler**, *Principal, Drew-Freeman Middle School*



Construction Overview



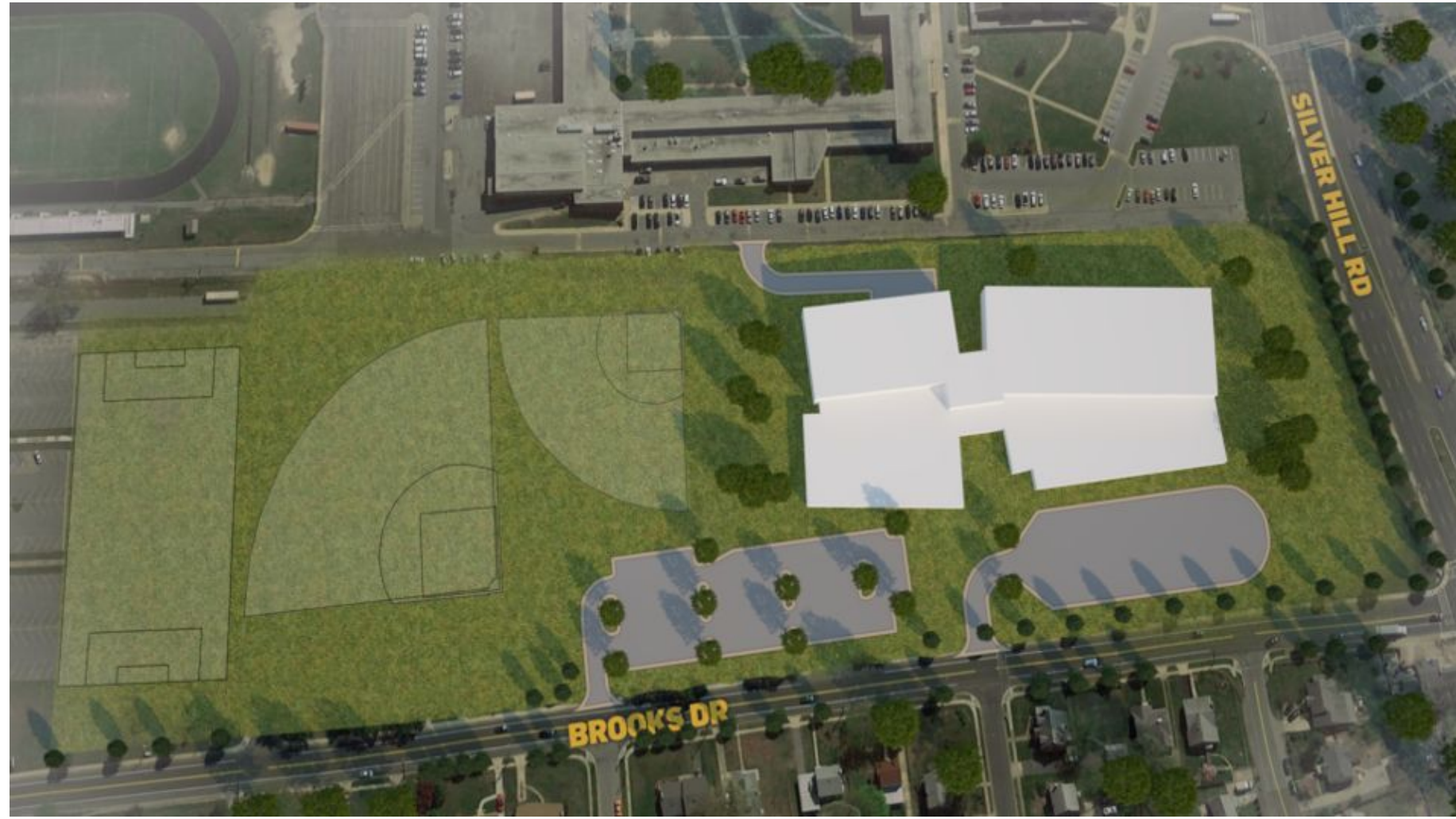


Construction Overview

Major Completed Work	Work in Progress	Next Steps
Major equipment installed: RTU's, electrical switchgear and generators, boilers, HVAC chillers, and elevators.	Final paint throughout the building.	Power up and running of all RTUs is ongoing.
Interior walls completed, painting, and glass.	Bathroom tile in gang toilets.	Installation of all lockers is ongoing.
Learning Stairs structure.	Installation of ceiling tiles	Installation of all sidewalks to be completed.
Ceilings, lighting, and VCT and Ceramic tile flooring in academic areas.	Begin acclimating wood flooring for installation	Installation of landscaping and plantings is ongoing.
Exterior storefront and entrance canopy.		Installation of wood flooring is ongoing.
Turf playing fields		Final paint throughout the building to continue.
Installation of gym equipment – scoreboard, basketball hoops.		Installation of interior glazing to be completed.



Construction Overview





Construction Overview



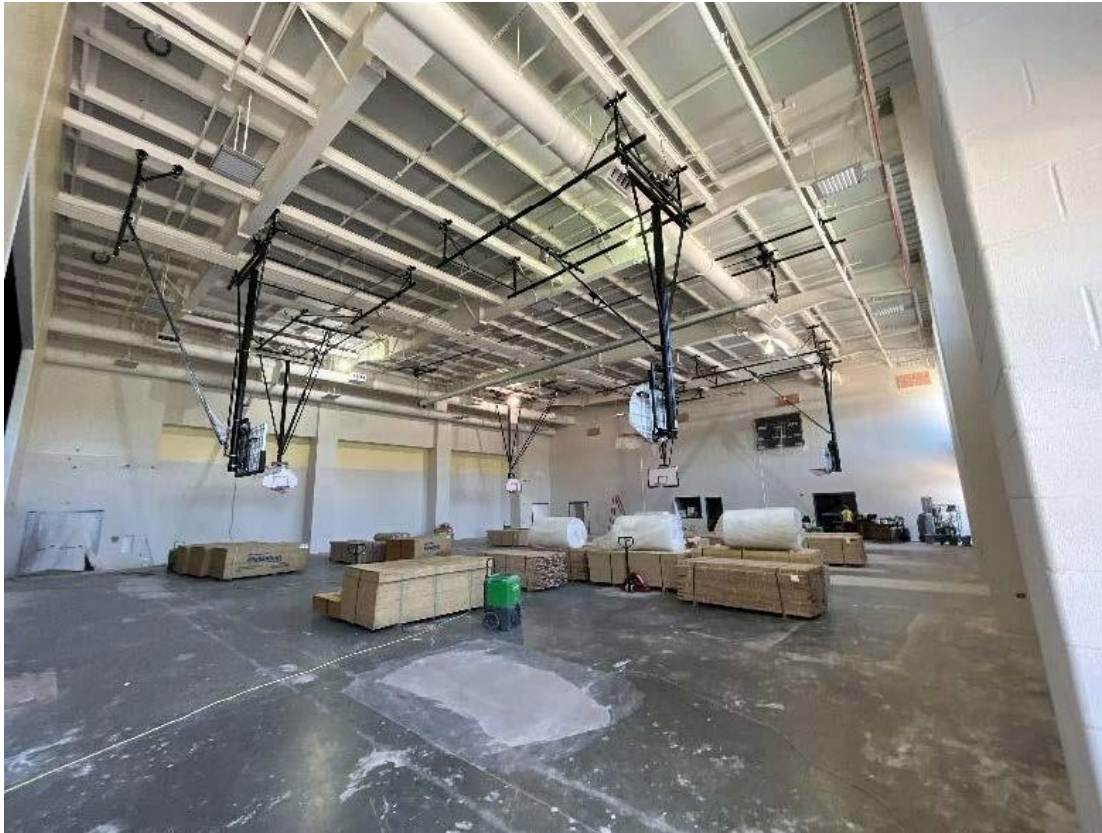
*Stormwater Management /
Bioretention*



Group Toilet - Ceramic Tile, VCT Install



Construction Overview



Gymnasium Floor Prep, Basketball Hoop Install



Group Toilet - Ceiling Close In, Plumbing Fixture Install



Construction Overview



Media Common



Dining & Learning Stair



Collaboration Space



Operations Update

School Programming

- The bell schedule and uniform policy will remain the same.
- Additional programming decisions will be made and communicated by the school's principal closer to the beginning of the school year.

Muralist

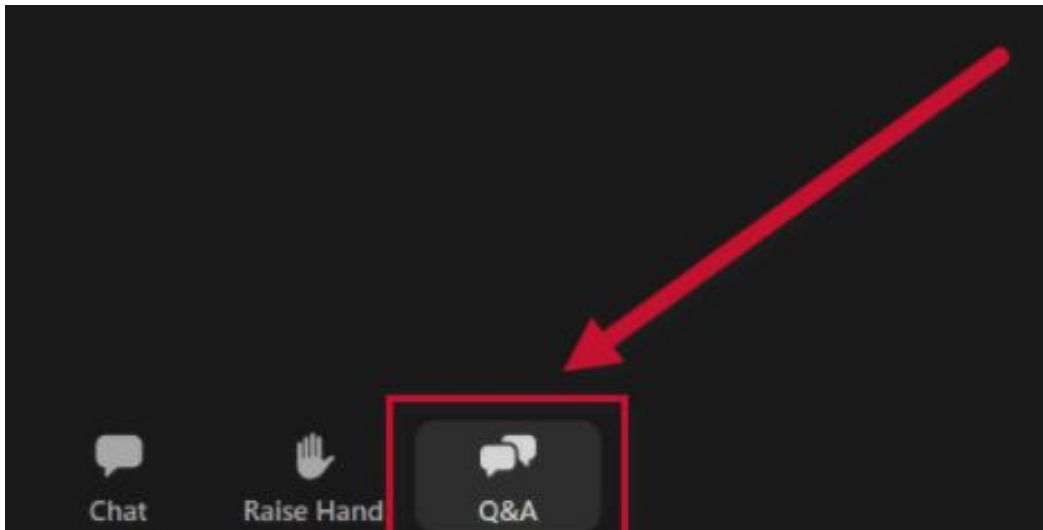
- The muralist for Drew-Freeman Middle School will be Brandon Donahue. Mr. Donahue is an award-winning multi-disciplinary artist whose work is rooted in community engagement. Mr. Donahue also works as an Assistant Professor of Art at the University of Maryland.
- To learn more about Mr. Donahue and view his work, visit his website at brandonjaquezdonahue.com.

Community Investment Project

- The selection of the community investment project will begin after the beginning of the school year. More information will be shared closer to that time.



- Please type your questions/comments in the Q&A area of Zoom.
- Questions and answers from this town hall will be posted on the Blueprint Schools page at bit.ly/PGCPSBlueprint.
- If you have additional questions, please send them through the Blueprint Schools Question Form at bit.ly/Blueprint-QA.





Thank You!

To submit additional questions and to view today's presentation, visit bit.ly/PGCPSBlueprint.