

# Prince George's County Public Schools Alternative Construction Finance Program Town Hall

Drew-Freeman Middle School    December 9, 2020



PRINCE GEORGE'S COUNTY  
EDUCATION & COMMUNITY PARTNERS

# Town Hall Agenda



## **1. Welcome/Meeting Logistics**

2. Program Overview
3. Community Engagement Process
4. Community Investment Program
5. Project Overview
6. Project Design
7. Q&A



## Meeting Logistics: **We Value Your Input**

### Translation

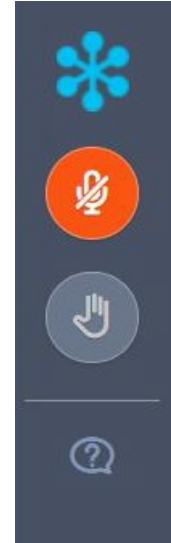
This presentation is available in both Spanish and French on the program website

[www.pgcpsschoolsnow.com](http://www.pgcpsschoolsnow.com) by December 31<sup>st</sup>.

### Submit a Question or Comment

At any time in the meeting, use the Question function in the GoTo Webinar toolbar. →

The team will answer questions throughout the session and at the end of the presentation.



### Participate in Poll Questions

When prompted, submit your response by selecting an option in the GoTo Webinar window.

One



Two

Three

11/16

# Welcome: Today's Presenters

---



**Jason Washington**  
**PGCPS**  
Director of Alternative  
Construction Finance  
Program

Owner



**Tammie Yeadon**  
**Brailsford & Dunlavey**  
Communications  
Manager

Program Coordinator



**Michael Ricketts**  
**Gilbane**  
Senior Design-Build  
Executive

Construction



**Yvette Stevens**  
**Gilbane**  
Director of  
Economic Inclusion  
& Community Affairs



**Bill Bradley**  
**Stantec Architecture**  
Principal Architect

Design



**Kathy Dixon**  
**KDA Architects**  
Founder and  
Principal Architect



# Town Hall Agenda



1. Welcome/Meeting Logistics

**2. Program Overview**

**3. Community Engagement Process**

4. Community Investment Program

5. Project Overview

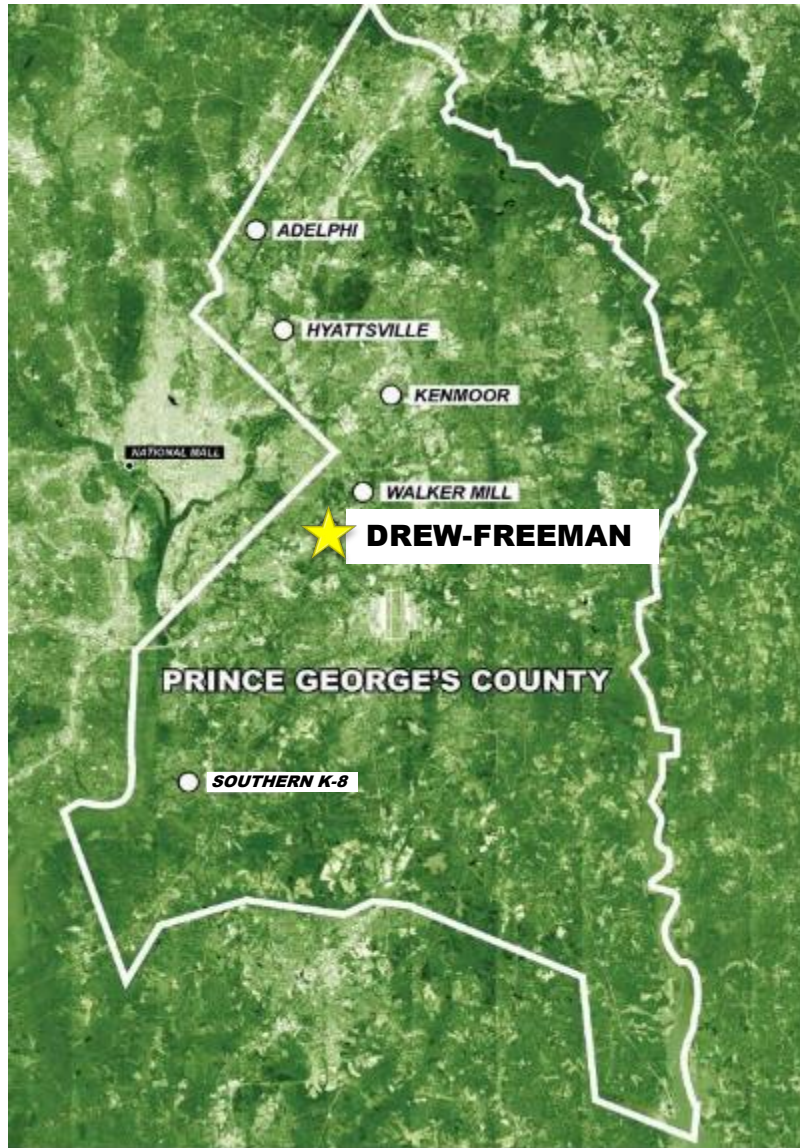
6. Project Design

7. Q&A



## Program Overview: **Background**

---



### **Design-Build-Finance-Maintain (DBFM) Program**

- Six New Schools
  - Five - 1,200 student middle schools
  - One - 2,000 student K-8
- Currently in the Exclusive Negotiation Agreement Period
- 3 Year Design-Build Phase (2020 – 2023)
- 30 Year Building Maintenance Period (2023 – 2053)



# Program Overview: **Community Engagement Process**



## **Town Hall Meetings**

- ✓ On-going town halls provided for each school community.
- ✓ Presentations will include project and community impact updates.
- ✓ Participants' questions are addressed during the meeting; all follow-up materials/additional info is provided on the program website:  
**[www.pgcpsschoolsnow.com](http://www.pgcpsschoolsnow.com)**



## **Project Planning Committees (PPC)**

- ✓ PPC teams are representative of individual school communities, selected and led by school principals.
- ✓ PPCs will use their community and school-based expertise to inform design and actively participate in each phase of the design-build period.
- ✓ Feedback loop provides opportunities for PPCs to provide guidance and support the advancement of the school design.



## **Community Investment**

- ✓ PGCECP will provide monthly MBE/CBB outreach and pre-certification events.
- ✓ Community investment opportunities and program updates will be shared at town halls, with the PPCs and on the program website.



# Town Hall Agenda

- 
1. Welcome/Meeting Logistics
  2. Program Overview
  3. Community Engagement Process
  - 4. Community Investment Program**
  5. Project Overview
  6. Project Design
  7. Q&A





# Community Investment Program: **Employment, Business, Educational, Community Service**

---



## **Employment**

Program 'job bank'

Internships & Apprenticeships



## **Business Opportunities**

MBE/CBB/CBSB Firms

Mentor-Protégé Program



## **Educational Programs**

Scholarships, ACE Program

CTE Involvement



## **Community Service**

### **Projects**



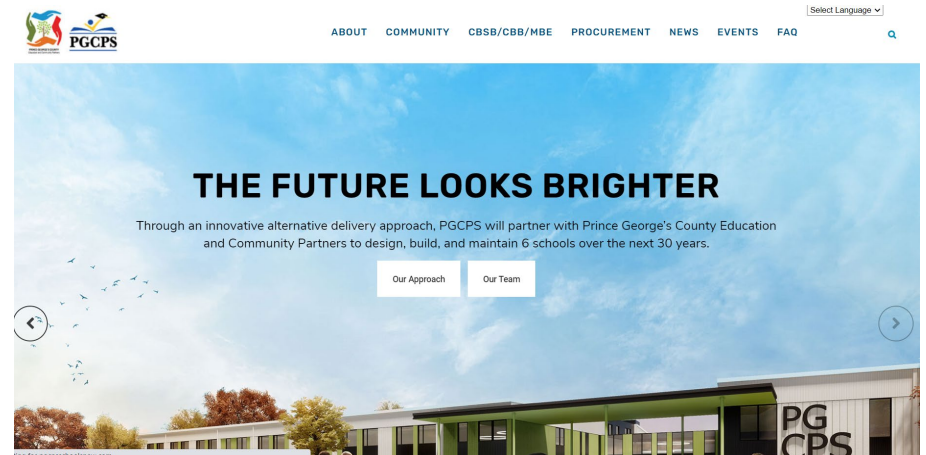
## CBB/CBSB/MBE Requirements

- 30% MBE
  - 20% CBB
- Maximize Local Business

## Participation

- Bid package breakdown
- Contractor matchmaking

[www.pgcpsschoolsnow.com](http://www.pgcpsschoolsnow.com)






## Community Investment Program: **Community Services and Amenities**

---



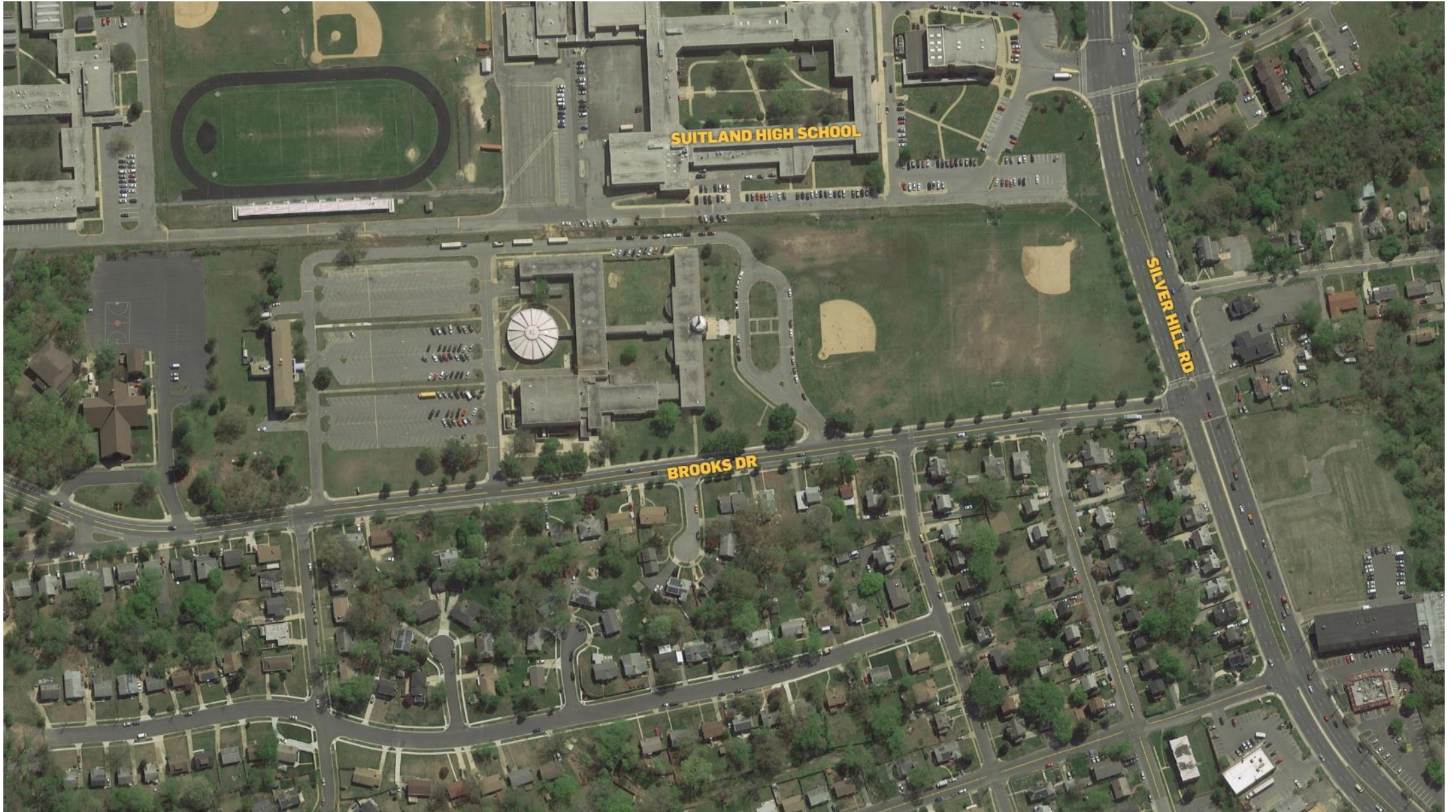
- 'Customized' services/amenities plan for each individual community
- Work with communities & stakeholders to identify desired services/amenities
- Individual school project teams will volunteer time, tools, materials, resources
- Example Services:
  - Food, Clothing, School Supply Drives
  - Habitat for Humanity project
  - Rebuilding Together project

# Town Hall Agenda

- 
1. Welcome/Meeting Logistics
  2. Program Overview
  3. Community Engagement Process
  4. Community Investment Program
  - 5. Project Overview**
  6. Project Design
  7. Q&A




# Project Overview: **Drew-Freeman**





# Town Hall Agenda

- 
1. Welcome/Meeting Logistics
  2. Program Overview
  3. Community Engagement Process
  4. Community Investment Program
  5. Project Overview
  - 6. Project Design**
  7. Q&A



# Project Design:



## Drew Freeman Middle School







## Project Design:





# Project Design:





# Project Design:

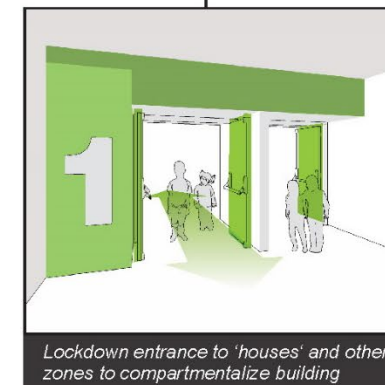
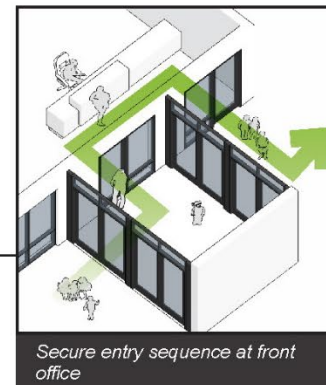
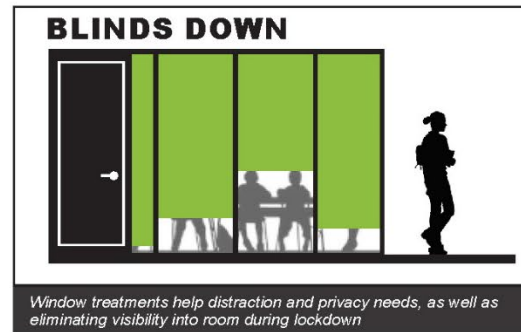
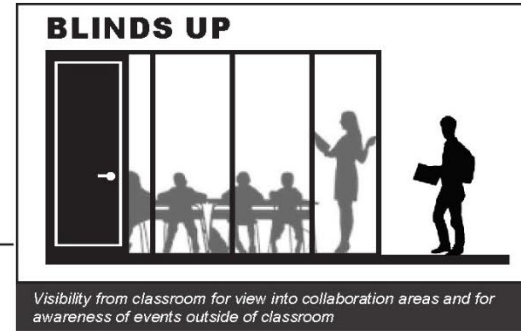
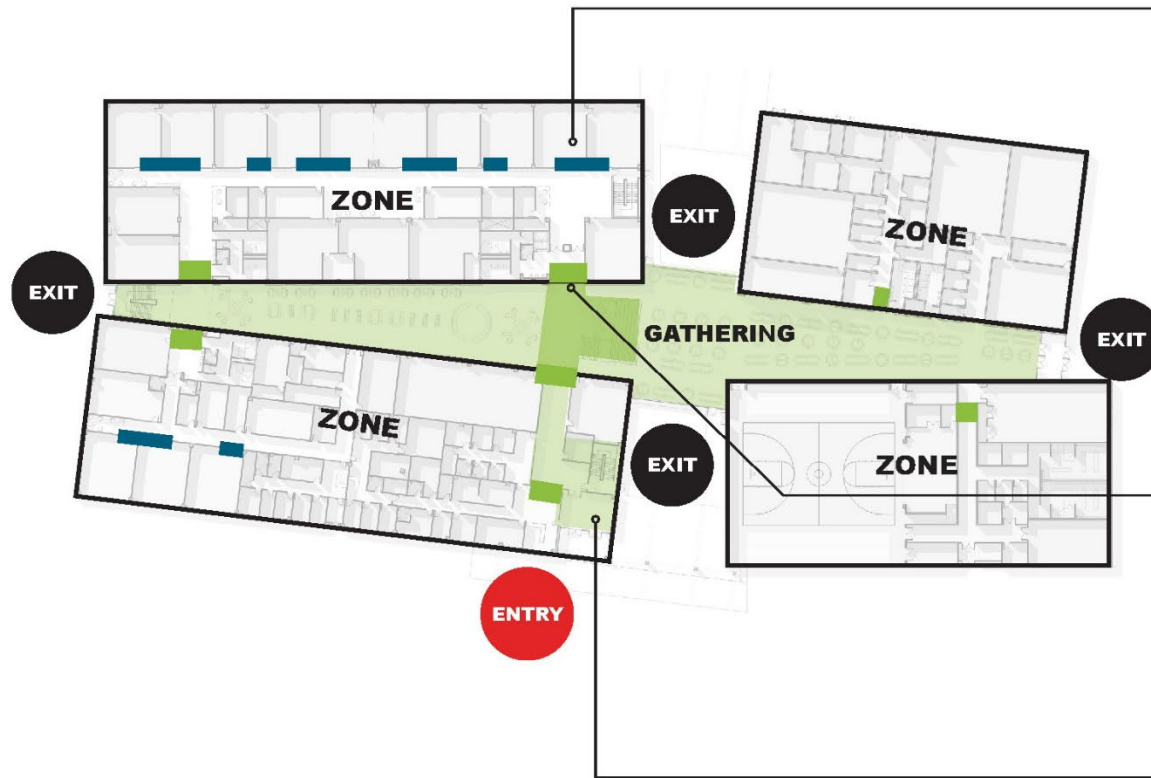




# Project Design:

## SECURITY CONSIDERATIONS

The building has multiple layers of safety and security. The secure vestibule requires visitors to check in with the front office before being granted access to the building. The academic areas can be isolated from more public areas by closing doors at entrances to "houses". Under normal school conditions, the doors to the 'houses' remain in an held-open position for easy circulation and an inviting entrance into each academic area. However, doors to the academic areas can be locked should the need arise without compromising emergency exiting routes. Classroom areas with glazing into collaboration areas are equipped with blinds should the occupants feel the need to obstruct the view into the room.





# Project Design:





## Project Design:





# Project Design:





## Next Steps

---

### Stay Informed

- **Town Hall Meeting** presentation materials, including translation and Q&A, will be posted by December 31<sup>st</sup>:  
[www.pgcpsschoolsnow.com](http://www.pgcpsschoolsnow.com).
- **Meeting Frequency:** every other month
- **Next Meetings:** February 2021 (exact dates TBD)

### PGCPS Boundary Studies

Comprehensive School Boundary Initiative Community Conversations:

- Thurs, Jan 7
- Sat, Jan 9 (in Spanish)
- Tues, Jan 12
- Wed, Jan 13

The Boundary Initiative web portal will launch Friday, Dec 4<sup>th</sup> and will be accessible from:

<https://offices.pgcps.org/schoolboundaries/>

### Upcoming Program Events

- MBE/CBB outreach event Thursday, Dec 10<sup>th</sup>  
<https://pgcpsschoolsnow.com/events>
- Project Planning Committee Engagement (school-based meetings)



# THANK YOU

Questions: [jason.washington@pgcps.com](mailto:jason.washington@pgcps.com)



PRINCE GEORGE'S COUNTY  
EDUCATION & COMMUNITY PARTNERS