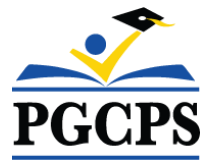




PGCPS . **ENGAGE . DESIGN . BUILD . COMMUNICATE** . PGCPS



# COLIN L. POWELL K-8 ACADEMY

PROJECT UPDATE MEETING | FEBRUARY 9, 2023, 6:30 PM

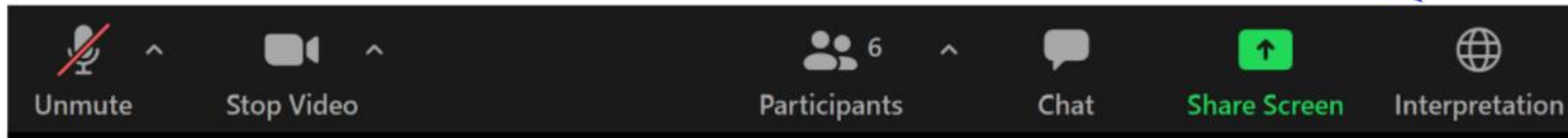


PRINCE GEORGE'S COUNTY  
EDUCATION & COMMUNITY PARTNERS

# SERVICIOS DE INTERPRETACIÓN

## *INTERPRETING SERVICES*

La interpretación simultánea  
está disponible en español.  
*Simultaneous interpretation is  
available in Spanish.*



# SERVICIOS DE INTERPRETACIÓN

## *INTERPRETING SERVICES*



**On a computer**-- At the bottom of the screen will be an interpretation globe. Click that globe and then select *Spanish*.

**En una computadora**-- En la parte baja de la pantalla habrá un globo de interpretación. Haga clic en ese globo y seleccione "Spanish."

---



**On a mobile device**-- At the bottom of the screen, tap the ellipses icon on the bottom right (...).

- Tap *Language Interpretation*.
- Tap *Spanish*.

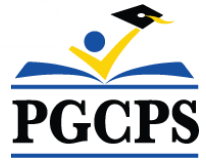
**En un dispositivo móvil**-- En la parte baja de la pantalla, toca el icono de elipses en la parte baja derecha (...).

- Toque *Language Interpretation*.
- Toque *Spanish*.



## **We value your input.**

- Please type your questions/comments in the Q&A area of Zoom.
- Questions and answers from this town hall will be posted on [pgcpsblueprintschools.com](http://pgcpsblueprintschools.com).



## **Our Commitment**

PGCPS is moving swiftly to deliver safe, state-of-the-art, and sustainable learning environments for our students, teachers, and communities.



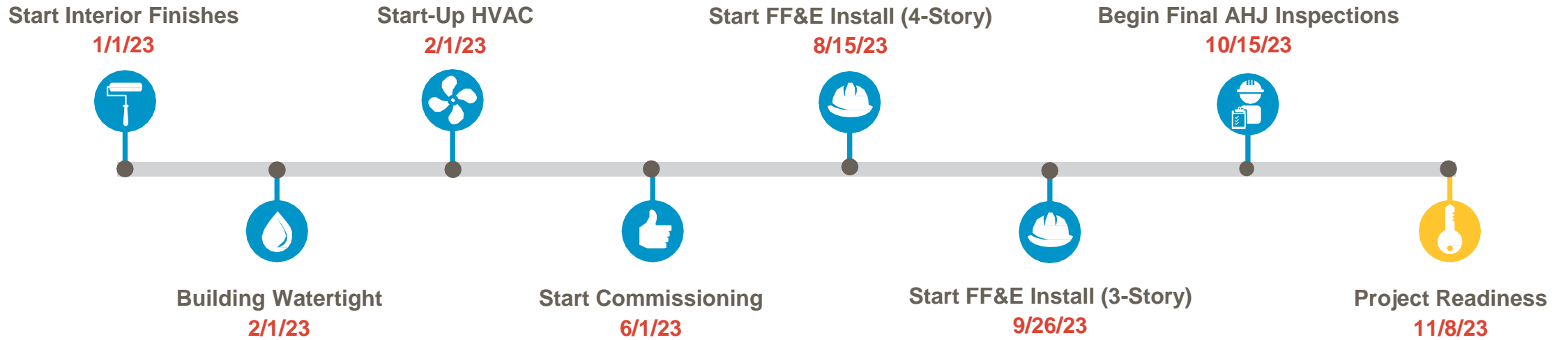
## Agenda

- Team Introductions
- Operations Update
- Construction Update
- Special Education Overview
- Upcoming Meetings
- Q&A

# Operations Overview

- **School Leadership:** Principal position is being prioritized by PGCPS HR, with expectations that a selection will be made by late spring. Once hired, the Program will work closely with the Principal and new administrative staff to finalize operational needs and logistics for the school.
- **Mural RFP:** Muralist selection has been completed! The selected artists will be required to meet with the community and school-based staff to inform the inspiration and direction of mural. More to come!
- **Community Asset Program:** Supporting school leadership in providing a determined community asset.

# Construction Update

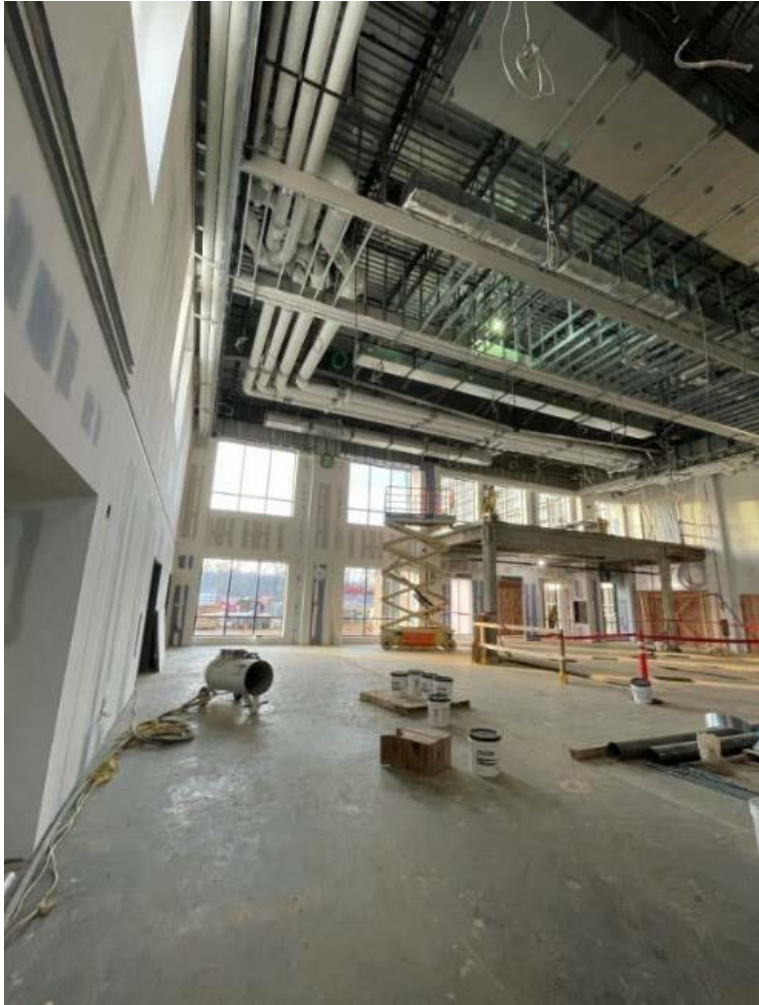




# Construction Update

Completed Work	Work in Progress	Next Steps
Start-up of temporary heat in the 4-story tower completed.	Installation of exterior storefront at the 3-story tower in progress.	Installation of exterior storefront is ongoing.
Installation of exterior metal wall panels at the 3-story tower completed.	Overhead MEP rough-in on level 3 of the 3-story tower in progress.	Delivery of first roof top units (RTU) to begin.
Spray fireproofing at the west entrance completed.	Light fixture installation in the main gym in progress.	Finishing drywall and prime paint in 4-story tower is ongoing.
In-wall Mechanical Electrical Plumbing (MEP) rough-in on level 4 of the 4-story tower completed.	In-wall inspections on level 3 of the 4-story tower in progress.	In-wall MEP rough-in on level 2 of the 3-story tower to begin.
Interior stud wall framing on levels 1 and 2 of the 3-story tower completed.	In-wall MEP rough-in on level 1 of the 3-story tower in progress.	Installation of gym equipment to begin.
In-wall final close-in inspection on level 2 of the 4-story tower completed.	Hanging drywall on levels 2 and 3 of the 4-story tower in progress.	Installation of kitchen ceramic tile to begin.
Completion of ductwork at roof top unit (RTU) and installation of RTU curbs completed.	Turning over elevators for construction use in progress.	Grading at east parking area to begin.
Installation of gas piping completed.	Installation of dining/media learning stairs in progress.	
	Final inspections for permanent power in progress.	

# Construction Update



*Dining Area*



*2nd Floor (4-Story Tower).*

# Construction Update



*Main Electrical Room - Switchgear*



*West Entrance*

# Special Education



**Trinell M. Bowman**  
*Associate Superintendent,  
Department of Special Education*



**Mark Andrews**  
*Business Operations Coordinator  
Department of Special Education*

# Special Education Core Services



- Ensure children and students with disabilities are provided with appropriate special education services.
- Ensure high-quality professional learning opportunities to improve teaching and enhance student learning.
- Provide resources to families to enable them to engage meaningfully in their child's growth and development.

# Special Education Strategic Plan



A four-year strategic plan was developed in 2019 to provide accountability, direction and expectations for PGCPS to improve academic achievement for students with disabilities.

The plan focuses on three goal areas:

- Goal 1:** Enhancing the delivery of special education services;
- Goal 2:** Implementing an integrated system of general supervision, monitoring of the implementation of Individualized Education Program (IEP); and
- Goal 3:** Providing professional learning and coaching to build teacher capacity to support the implementation of evidence-based practices and specially designed instruction.

## Special Education Strategic Plan

# Special Education Strategic Plan Update



## PGCPS - Department of Special Education Strategic Plan Update - Hanover Research 2022

# Special Education Services at Colin Powell, K-5

- General education class settings with supports and services provided by special education resource teachers, related service providers, or other staff members as appropriate.

- Models of service delivery may include pull-out services in a resource room, push-in services in the general education classroom or co-teaching (special educator/related service and general educator).

- Specially designed instruction will be provided as indicated in each student's Individualized Education Program (IEP).

- Instruction will be provided based on the grade level Maryland College and Career-Ready Standards to include accommodations and modifications to the general education curriculum as outlined in the IEP.

- The focus is to support academic, independence or social skills within the grade-level curriculum and provide direct instruction in identified IEP goal areas.

- All related services (i.e. speech, occupational therapy, etc.) will be provided as indicated in the student's IEP.



## Special Education Services at Colin Powell, 6-8

- Special education teachers/related service providers may **co-teach** with a general educator, **provide small group instruction** inside the general education setting. Some students may access the **academics resource course** which provides students with instructional supports and skill development. Curriculum incorporates instructional strategies based on **student learning styles** to address areas such as: **social skills, communication, self advocacy, interpersonal, self-awareness, test taking skills, reading/mathematics interventions and executive functioning skills.**

- All **related services** (i.e. speech, occupational therapy, etc.) and **specially designed instruction** will be provided as indicated in the student's IEP.



- Instruction will be provided based on grade level standards to include **accommodations and modifications** to the general education curriculum as outlined in the IEP.

- **Beginning at age 14**, students are provided with **transition services** to assist the student in the attainment of skills necessary to reach his or her postsecondary goals.

# Special Education Services at Colin Powell: Autism Program

PGCPS provides specially designed instruction for students with autism spectrum disorder across the K-12 continuum. This instruction is provided in inclusive settings based on the Maryland College and Career-Ready Standards.

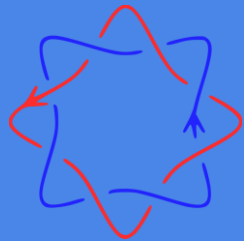
If a student requires additional support not available within the neighborhood school, an autism program may be considered by the school team.

Within PGCPS autism programs, students are educated inside and outside the general education classroom using evidence-based strategies to build capacities in the core deficits of autism.

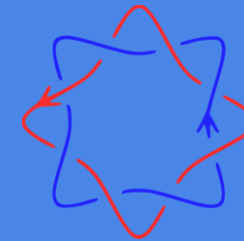
Through targeted instruction in social skills, self awareness, self regulation, and executive function students can effectively gain needed skills and fully participate in educational opportunities.

Evidence based practices include: visual supports, task analysis, modeling, reinforcement, cognitive behavioral instructional strategies, and direct instruction.

The Autism Program at Colin Powell will include the following resources: sensory calming room, access to social-emotional curriculum, crisis intervention resource teacher, board certified behavior analyst and program coordinator.



**If you have questions, email [camille.johnson@pgcps.org](mailto:camille.johnson@pgcps.org)**



# Upcoming Meetings

## Upcoming Meeting Dates

- March 9, 2023
- April 13, 2023
- May 11, 2023

## Future Meeting Focus Areas (requests have been extended)

- Department of Public Works and Transportation
- PGCPS Regional Office
- PGCPS Department of Transportation

# Q&A

Please type your questions/comments in the Q&A area of Zoom. Questions and answers from this town hall will be posted on [www.pgcpsblueprintschools.com](http://www.pgcpsblueprintschools.com).



**Thank You!**

**To submit additional questions and to view today's presentation, visit [www.pgcpsblueprintschools.com](http://www.pgcpsblueprintschools.com)**