

# Cherokee Lane Elementary School Concept Design Presentation

Project Planning Committee Meeting

March 19, 2019



## Meeting Agenda

- **Welcome and Introductions**
- **Test Fit Study Purpose**
- **Review Concept**
- **Educational Specifications**
- **Project Timeline**

---

# Site Plan

---



# Site Plan



# Site Plan



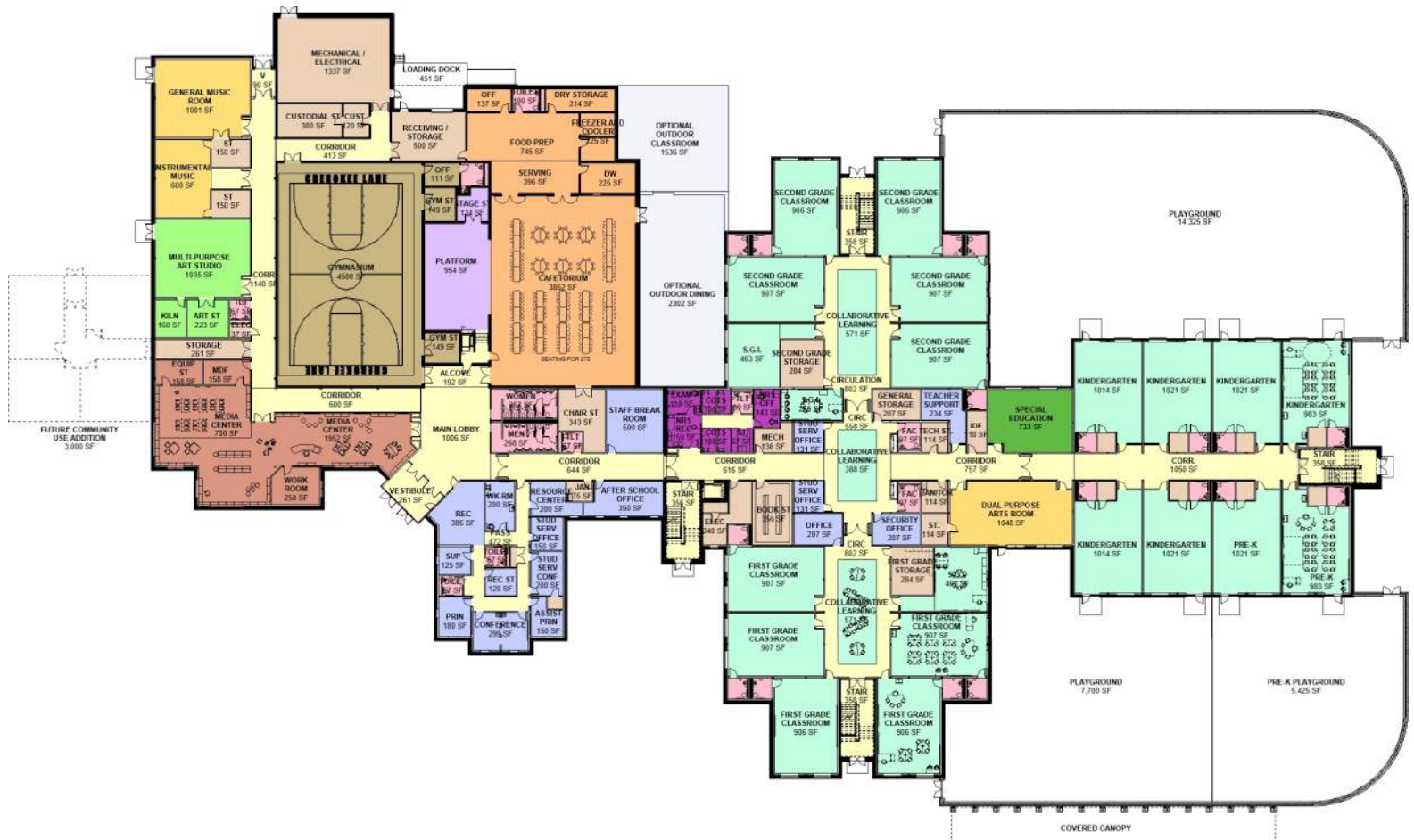
## **Educational Specifications**

- **General Planning Considerations**
- **Educational Technology**
- **Safety and Security**
- **Sustainability Criteria**
- **State Rated Capacity**
- **Space Requirements**

---

# Floor Plans

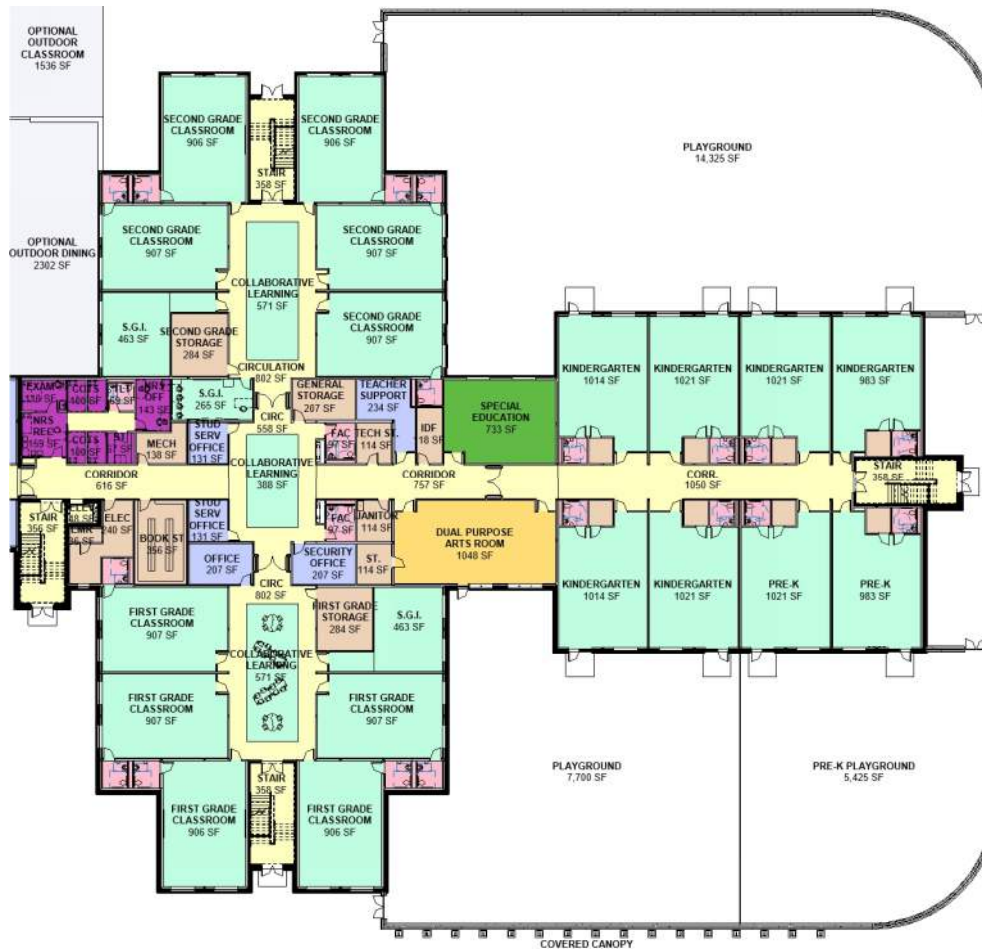
---



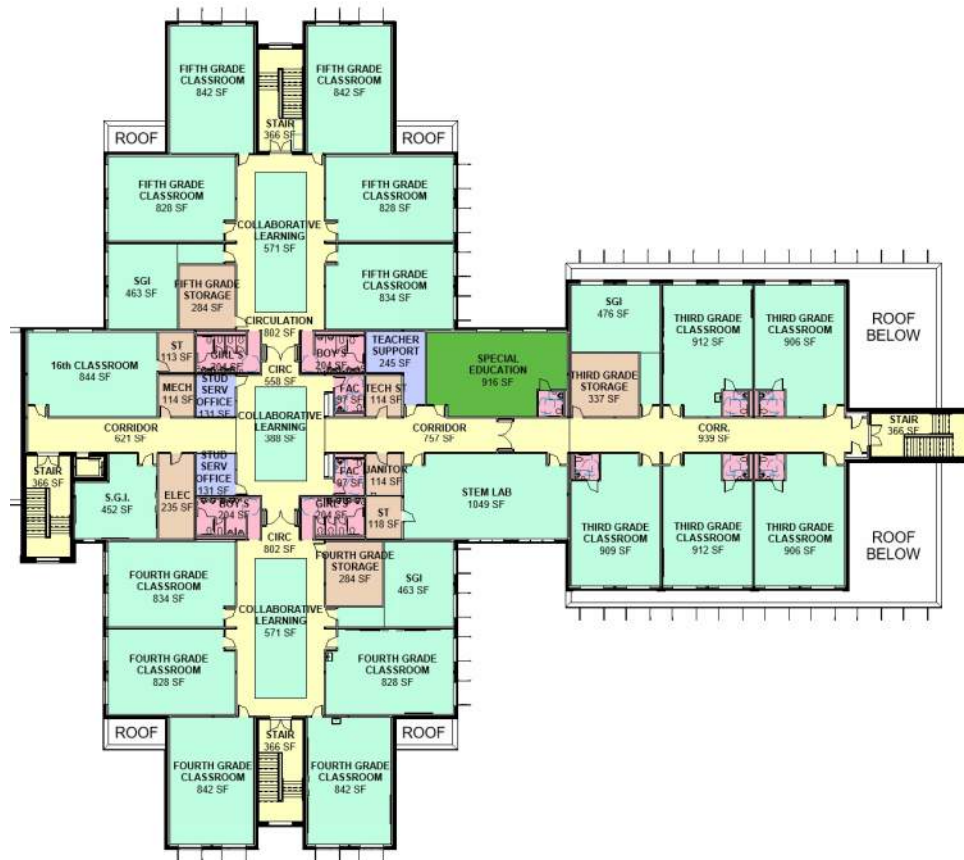
# Overall First Floor Plan







# Partial First Floor Plan – 2-story



# Overall Second Floor Plan – 2-story

---

# Program/ Design Comparison

---

Academic Core Area			
Ed Spec Net SF	Proposed Net SF	Proposed Room Usage	Delta
950	884	16th Classroom	66
0	113	16th Classroom Storage	-113
0	571	Collaborative Learning	-571
0	388	Collaborative Learning	-388
0	571	Collaborative Learning	-571
0	571	Collaborative Learning	-571
0	388	Collaborative Learning	-388
0	571	Collaborative Learning	-571
900	828	Fifth Grade Classroom	72
900	828	Fifth Grade Classroom	72
900	834	Fifth Grade Classroom	66
900	842	Fifth Grade Classroom	58
900	842	Fifth Grade Classroom	58
950	906	First Grade Classroom	44
950	906	First Grade Classroom	44
950	907	First Grade Classroom	43
950	907	First Grade Classroom	43
950	907	First Grade Classroom	43
900	828	Fourth Grade Classroom	72
900	828	Fourth Grade Classroom	72
900	834	Fourth Grade Classroom	66
900	842	Fourth Grade Classroom	58
900	842	Fourth Grade Classroom	58
1,100	1,021	Kindergarten	79
1,100	1,021	Kindergarten	79
1,100	1,021	Kindergarten	79
1,100	1,021	Kindergarten	79
1,100	1,014	Kindergarten	86
1,100	1,014	Kindergarten	86

1,100	983	Pre-K	117
1,100	983	Pre-K	117
250	463	S.G.I.	-213
250	463	S.G.I.	-213
250	463	S.G.I.	-213
250	463	S.G.I.	-213
250	461	S.G.I.	-211
250	476	S.G.I.	-226
950	906	Second Grade Classroom	44
950	906	Second Grade Classroom	44
950	907	Second Grade Classroom	43
950	907	Second Grade Classroom	43
950	907	Second Grade Classroom	43
800	733	Special Education	67
800	919	Special Education	-119
1,100	1,049	STEM Lab	51
0	118	STEM Storage	-118
150	131	Student Services Office	19
150	131	Student Services Office	19
150	131	Student Services Office	19
150	131	Student Services Office	19
250	234	Teacher Support	16
250	245	Teacher Support	5
100	114	Tech Storage	-14
100	114	Tech Storage	-14
100	0	Tech Storage	100
950	906	Third Grade Classroom	44
950	906	Third Grade Classroom	44
950	909	Third Grade Classroom	41
950	912	Third Grade Classroom	38
950	912	Third Grade Classroom	38
<b>38,600</b>	<b>40,933</b>	<b>Subtotal</b>	<b>-2,333</b>

# Program/Design Comparison

Administration Space			
Ed Spec Net SF	Proposed Net SF	Proposed Room Usage	Delta
150	150	Assistant Principal	0
300	300	Conference	0
200	200	Parent Resource Center	0
0	472	Passage	-472
180	180	Principal	0
125	120	Records Storage	5
500	500	Staff Break Room	0
200	200	Student Services Conference	0
0	25	Student Services Storage Room	-25
0	16	Coat Closet	-16
150	150	Student Services Office	0
125	125	Supplies	0
300	356	Text Book Storage	-56
50	67	Toilet	-17
50	67	Toilet	-17
400	386	Waiting / Reception	14
200	200	Work Room	0
<b>2,930</b>	<b>3,514</b>	<b>Subtotal</b>	<b>-584</b>

Health Suite Space			
Ed Spec Net SF	Proposed Net SF	Proposed Room Usage	Delta
100	100	Cots	0
100	100	Cots	0
125	110	Exam	15
100	143	Nurse Office	-43
170	159	Nurse Reception	11
0	103	Passage	-103
40	67	Storage	-27
50	69	Toilet	-19
<b>685</b>	<b>851</b>	<b>Subtotal</b>	<b>-166</b>

### Maintenance and Custodial Space

Ed Spec Net SF	Proposed Net SF	Proposed Room Usage	Delta
120	120	Custodial Office	0
300	300	Custodial Storage	0
500	500	Receiving/Storage	0
<b>920</b>	<b>920</b>	<b>Subtotal</b>	<b>0</b>

### Media Center Space

Ed Spec Net SF	Proposed Net SF	Proposed Room Usage	Delta
2,250	1,952	Library Commons	298
700	700	Technology Teaching	0
200	158	Equipment Storage	42
150	158	Head End Room	-8
250	250	Work Room	0
<b>3,550</b>	<b>3,218</b>	<b>Subtotal</b>	<b>332</b>

### Performing Arts Space

Ed Spec Net SF	Proposed Net SF	Proposed Room Usage	Delta
1,000	1,000	General Music Room	0
1,000	1,048	Dual Purpose Arts Room	-48
0	114	Dual Purpose Arts Storage	-114
600	600	Instrumental Music Room	0
150	150	General Storage	0
150	150	Instrument Storage	0
1,000	954	Platform	46
150	134	Platform Storage	16
0	123	Platform Access (Lift or Ramp)	-123
<b>4,050</b>	<b>4,273</b>	<b>Subtotal</b>	<b>-223</b>

### Physical Education Space

Ed Spec Net SF	Proposed Net SF	Proposed Room Usage	Delta
4,500	4,500	Gymnasium	0
200	200	Dept. Office	0
150	149	Storage	1
150	149	Storage	1
<b>5,000</b>	<b>4,998</b>	<b>Subtotal</b>	<b>2</b>

### Visual Arts Space

Ed Spec Net SF	Proposed Net SF	Proposed Room Usage	Delta
1,000	1,005	Multi-purpose Studio	-5
100	160	Kiln	-60
200	223	Art Storage	-23
<b>1,300</b>	<b>1,388</b>	<b>Subtotal</b>	<b>-88</b>

### Student Dining and Food Service Space

Ed Spec Net SF	Proposed Net SF	Proposed Room Usage	Delta
3,975	3,852	Cafeteria/Commons	123
340	343	Chair Storage	-3
750	745	Food Prep	5
400	396	Serving Area	4
200	214	Dry Food Storage	-14
225	225	Freezer & Cooler	0
150	225	Dishwashing	-75
100	137	Office	-37
100	100	Toilet/Locker	0
<b>6,240</b>	<b>6,237</b>	<b>Subtotal</b>	<b>3</b>



Building Support Areas			
Ed Spec Net SF	Proposed Net SF	Proposed Room Usage	Delta
25,000	1,338	Mechanical / Electrical	
	261	Main Entrance Vestibule	
	1,006	Main Lobby	
	192	Alcove near Gym / Cafetrium	
	600	Corridor near Media Center	
	1,140	Corridor near Art / Music	
	416	Corridor to Receiving and Mechanical	
	90	Rear Vestibule near Music	
	636	Corridor to Staff Break Room	
	616	Corridor near Nurse	
	558	Circulation at Collaborative Intersection	
	802	Circ at Collab Learn First Grade	
	802	Circ at Collab Learn Second Grade	
	757	Corridor near Dual Purpose Arts Room	
	1,050	Corridor at Kindergarten Wing	
	356	Stair A First Floor	
	358	Stair B First Floor	
	358	Stair C First Floor	
	358	Stair D First Floor	
	48	Elevator First Floor	
	36	Elevator Machine Room	
	240	Electrical Room near Elevator	
	118	IDF near Special Ed	
	114	Janitor near Dual Purpose Arts	
	37	Electrical Closet near Art Storage	

	67	Toilet near Art Storage	
	267	Women near Main Lobby	
	268	Men near Main Lobby	
	67	Toilet near Chair Storage	
	70	Janitor near Chair Chair Storage	
	97	Faculty Toilet (central to building)	
	97	Faculty Toilet (central to building)	
	366	Stair A Second Floor	
	366	Stair B Second Floor	
	366	Stair C Second Floor	
	366	Stair D Second Floor	
	48	Elevator Second Floor	
	621	Second Floor Corridor near Elevator	
	558	Circulation at Collaborative Intersection	
	802	Circ at Collab Learn Fourth Grade	
	802	Circ at Collab Learn Fifth Grade	
	756	Second Floor Corridor near Spec Ed	
	939	Corridor at Third Grade Wing	
	235	2nd Flr Electrical Room near Elevator	
	114	2nd Flr Mech Rm near Elevator	
	204	Boy's Toilets at Fourth Grade	
	204	Girl's Toilets at Fourth Grade	
	204	Boy's Toilets at Fifth Grade	
	204	Girl's Toilets at Fifth Grade	
	97	Second Floor Faculty Toilet	
	97	Second Floor Faculty Toilet	
	114	Second Floor Janitor Closet	
	8,815	Walls (Floor Plan Area)	
<b>25,000</b>	<b>29,498</b>	<b>Subtotal</b>	<b>-4,498</b>

# Program/Design Comparison

Extra Rooms			
Ed Spec Net SF	Proposed Net SF	Proposed Room Usage	Delta
	350	After School Office	
	261	Storage (Future Corridor to Addition)	
	207	General Storage (central to building)	
	207	Security Office (central to building)	
	207	Additional Office (central to building)	
	284	First Grade Storage	
	284	Second Grade Storage	
	337	Third Grade Storage	
	284	Fourth Grade Storage	
	284	Fifth Grade Storage	
<b>0</b>	<b>2,705</b>	<b>Subtotal - Extra Program Rooms</b>	<b>-2,705</b>
	72	Passage to First Grade SGI	
	72	Passage to Second Grade SGI	
	81	Passage to Third Grade SGI	
	72	Passage to Fourth Grade SGI	
	72	Passage to Fifth Grade SGI	
<b>0</b>	<b>369</b>	<b>Subtotal - Extra Building Support</b>	<b>-369</b>

Grand Totals			
Ed Spec Net SF	Proposed Net SF	Proposed Room Usage	Delta
38,600	40,933	Academic Core Area	
2,930	3,514	Administration Space	
685	851	Health Suite Space	
920	920	Maintenance and Custodial Space	
3,550	3,218	Media Center Space	
4,050	4,273	Performing Arts Space	
5,000	4,998	Physical Education Space	
6,240	6,237	Dining and Food Service Space	
1,300	1,388	Visual Arts Space	
0	2,705	Extra Rooms - Program	
<b>63,275</b>	<b>69,037</b>	<b>TOTAL Building Net Square Footage</b>	<b>-5,762</b>
25,000	29,498	Building Support Areas	
0	369	Extra Rooms - Building Support	
<b>88,275</b>	<b>98,904</b>	<b>TOTAL Gross Square Footage</b>	<b>-10,629</b>

---

# Elevations/ Renderings

---



## Existing Buck Lodge Middle School



Partial Proposed Elevation – Front Entrance



Overall Proposed Elevation



Partial Proposed Elevation – Classroom wing



Overall Proposed Elevation



Proposed View of Front Entrance



## Proposed View of Classrooms



- **Test Fit Study**
- **Design Process**
- **Construction Administration Process**

	2019												2020											
	1st Qtr			2nd Qtr			3rd Qtr			4th Qtr			1st QTR			2nd QTR			3rd QTR			4th QTR		
	Jan	Feb	Mar	Apr	May	Jun	July	Aug	Sept	Oct	Nov	Dec	Jan	Feb	Mar	Apr	May	June	July	Aug	Sept	Oct	Nov	Dec
Schematic Design	█																							
Design Development				█																				
Construction Documents						█																		
Bidding								█																
Construction										█														
Punchlist																			█					
Move-In																				█				

## Proposed Project Schedule



Questions or Comments?

Prince George's County Public Schools  
Cherokee Lane Elementary School

The logo for Gilbert Architects Inc. features the word "gilbert" in a lowercase, serif font, with "Architects Inc." in a smaller, sans-serif font below it. The text is white and set against a dark green square background.

gilbert  
Architects Inc.

A small sign for Gilbert Architects Inc. is mounted on the brick wall of the building. It features the word "gilbert" in a lowercase, serif font, with "Gilbert Architects, Inc." in a smaller, sans-serif font below it.

gilbert  
Gilbert Architects, Inc.

*Partners in Progress*

Prince George's County Public Schools  
Cherokee Lane Elementary School