



Blueprint Schools Program Quarterly Report #8 December 2022



www.pgcpsblueprintschools.com



Angela D. Alsobrooks
County Executive

PGCPS Blueprint Schools

Quarterly Report #8

Table of Contents

Executive Summary | 3

Project Profiles | 4

Program Progress | 7

Construction Progress | 7

Construction Updates by Site | 7

Community Impact | 11

Blueprint Schools Program Newsletter | 11

Community Updates | 11

Closing Statement | 12

Appendix | 13

EXECUTIVE SUMMARY

The Blueprint Schools Program (the “Program”) enters its final Winter of construction with focus on continuing to build out interiors, erecting drywall, closing up walls, installing interior utilities, and preparing for the completion of each school.

One major objective of the Program was to create an economic development platform that would increase local participation through both procurement and employment opportunities. Utilizing the public-private partnerships delivery model has allowed for true participation through dollars spent and jobs created, rather than just relying on broad, unspecific declarations and goals.

Below are some of the Program’s most recent economic impact highlights. As of November 1, 2022:

- **\$125,218,761 have been spent on MBEs.** This amount represents 29% of the 30% minimum requirement set forth in the Project Agreement.
- **\$58,074,168 have been spent on CMBEs.** This amount represents 46% of the total amount spent on MBEs.
- **\$78,834,941 have been spent on CBBs.** This amount represents 18% of the total program value.
- **Over 1 million work hours have been logged through the Program.** It is anticipated that over 1.5 million hours will be logged when work concludes.
- **25+ local businesses have taken part in three Mentor-Protege Cohorts** convened by the Program.
- **The Program has conducted 13 business outreach programs.**
- **The Program has conducted two (2) matchmaking events.**

In the next few months, the Program will ramp up its local participation outreach efforts for the Services portion (30 years) of the Program with Honeywell. Participation requirements reset at school occupancy. Prince George’s County Education and Community Partners (PGCECP) is responsible for ensuring all economic inclusion requirements are met for the duration of our 30-year Blueprint Schools facility maintenance agreement.

The economic impact the Program has had on Prince George’s County’s local businesses is an undeniable success. We will continue to provide as many opportunities for Prince George’s residents and business owners as possible. Moreover, we’re committed to ensuring all six Blueprint Schools are complete and ready to accept students next academic year.

Jason Washington, Director
Office of Alternative Infrastructure Planning and Development

PROJECT PROFILES

Sonia Sotomayor Middle School at Adelphi



Project Status: Construction
Neighborhood: Adelphi
Address: 8820 Riggs Rd,
 Adelphi, MD 20783
Grade Configuration: 6-8
Capacity: 1,200
Square Footage: 144,800 sq. ft.
Principal: TBA

Area 2 Associate Superintendent:

- Dr. David G. Curry, Jr.

County Council Representative (District 2):

- Wanika B. Fisher

State Legislative Representatives (District 47):

- Senator Malcolm Augustine
- Delegate Diana Fennell
- Delegate Julian Ivey

School Board Representative (District 3):

- Pamela Boozer-Strother

Drew-Freeman Middle School



Project Status: Construction
Neighborhood: Suitland,
 Arnold Heights
Address: 2600 Brooks Dr.,
 Hillcrest Heights, MD 20746
Grade Configuration: 6-8
Capacity: 1,200
Square Footage: 144,800 sq. ft.
Principal: Natasha Kyler

Associate Superintendent:

- Dr. David G. Curry, Jr.

County Council Representative (District 7):

- Krystal Oriadha

State Legislative Representatives (District 24):

- Senator Joanne C. Benson
- Delegate Andrea Fletcher Harrison
- Delegate Faye Martin Howell
- Delegate Jazz M. Lewis

School Board Representative (District 7):

- Kenneth Harris II

PROJECT PROFILES *(continued)*

Hyattsville Middle School	
	
<p>Project Status: Construction Neighborhood: Hyattsville, West Riverdale, University Park Address: 6001 42nd Ave., Hyattsville, MD 20781 Grade Configuration: 6-8 Capacity: 1,200 Square Footage: 162,610 sq. ft. Principal: Chanita Stamper</p>	<p>Associate Superintendent:</p> <ul style="list-style-type: none"> ● Dr. David G. Curry, Jr. <p>County Council Representative (District 2):</p> <ul style="list-style-type: none"> ● Wanika B. Fisher <p>State Legislative Representatives (District 22):</p> <ul style="list-style-type: none"> ● Senator Paul G. Pinsky ● Delegate Anne Healey ● Delegate Alonzo T. Washington ● Delegate Nicole A. Williams <p>School Board Representative (District 3):</p> <ul style="list-style-type: none"> ● Pamela Boozer-Strother

Kenmoor Middle School	
	
<p>Project Status: Construction Neighborhood: Palmer Park, Kentland, Glenarden Address: 2501 Kenmoor Dr, Landover, MD 20785 Grade Configuration: 6-8 Capacity: 1,200 Square Footage: 144,800 sq. ft. Principal: Rebecca Turner</p>	<p>Associate Superintendent:</p> <ul style="list-style-type: none"> ● Dr. David G. Curry, Jr. <p>County Council Representative (District 5):</p> <ul style="list-style-type: none"> ● Jolene Ivey <p>State Legislative Representatives (District 24):</p> <ul style="list-style-type: none"> ● Senator Joanne C. Benson ● Delegate Andrea Fletcher Harrison ● Delegate Faye Martin Howell ● Delegate Jazz M. Lewis <p>School Board Representative (District 4):</p> <ul style="list-style-type: none"> ● Shayla Adams-Stafford

PROJECT PROFILES *(continued)*

Colin L. Powell K-8 Academy



Project Status: Construction
Neighborhood: Tantallon, Fort Washington
Address: 12200 Fort Washington Rd., Fort Washington, MD 20744
Grade Configuration: K-8
Capacity: 2,000
Square Footage: 233,865 sq. ft.
Principal: TBD

- Associate Superintendents:**
- Dr. Kasandra G. Lassiter
 - Dr. David G. Curry, Jr.
- County Council Representative (District 8):**
- Edward Burroughs
- State Legislative Representatives (District 26):**
- Senator Obie Patterson
 - Delegate Veronica L. Turner
 - Delegate Kriselda Valderrama
 - Delegate Jay Walker
- School Board Representative (District 9):**
- Lolita E. Walker

Walker Mill Middle School



Project Status: Construction
Neighborhood: Walker Mill
Address: 800 Karen Blvd., Capital Heights, MD 20743
Grade Configuration: 6-8
Capacity: 1,200
Square Footage: 144,800 sq. ft.
Principal: Erin Cribbs

- Associate Superintendent:**
- Dr. David G. Curry, Jr.
- County Council Representative (District 6):**
- Wala Blegay, Vice-Chair
- State Legislative Representatives (District 25):**
- Senator Melony Griffith
 - Delegate Darryl Barnes
 - Delegate Nick Charles
 - Delegate Karen R. Toles
- School Board Rep (District 6):**
- Branndon D. Jackson

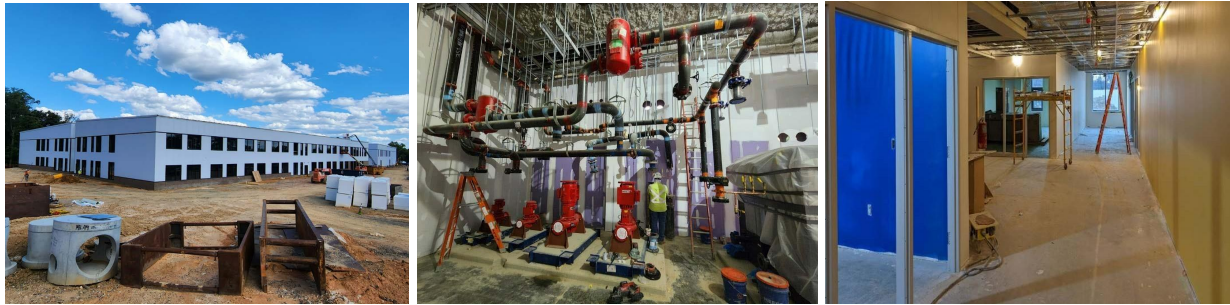
PROGRAM PROGRESS

Construction Progress

Construction activities continue at all six school sites. The Program has published sixteen (16) issues of the Blueprint Schools News & Updates newsletter and continues to disseminate construction activity notices as needed throughout each impacted community.

Construction Updates by Site

Sonia Sotomayor Middle School at Adelphi



Completed Activities	30-Day Look-Ahead
Retaining wall at the northeast loading dock completed.	<ul style="list-style-type: none"> ● Interior stud wall framing in sector 2G is ongoing. ● MEP ceiling rough-ins in sectors 2K and 2G are ongoing. ● Installation of the site underground utilities is ongoing. ● Installation of interior door frames is ongoing. ● Installation of the canopy steel structure and TPO roofing is ongoing. ● Painting of classrooms in sectors 1A and 1B and all CMU walls is ongoing. ● Installation of electrical generator and HVAC chiller to begin.
Curb and gutter installation and paving at the vehicular parking area completed.	
Installation of exterior metal wall panels and spray fireproofing in all other areas completed.	
Foundations and steel for the main entrance canopy completed.	
Retaining wall at the southeast parking area and underground electrical duct bank completed.	
Site underground water piping installation of the storm water detention system completed.	

Colin L. Powell K-8 Academy (formerly Southern K-8)



Activity	30-Day Look-Ahead
All concrete slabs on metal deck and secondary steel girt framing completed.	<ul style="list-style-type: none"> ● Installation of storefront frames and glass at the 4-story tower to begin. ● Spray fireproofing on level 3 of the 3-story tower to begin. ● Asphalt paving at Swan Creek Road widening to begin. ● Overhead MEP rough-in on level 2 of the 4-story tower to continue. ● Installation of exterior metal wall panels and hollow metal door frames is ongoing. ● Interior stud wall framing on level 4 of the 4-story tower is ongoing.
Secondary steel girt framing, spray fireproofing, overhead MEP rough-ins, and exterior metal wall panels at the 4-story tower completed.	
Asphalt paving, curbs, gutters, and sidewalks at the west parking area completed.	
Exterior metal wall panels and installation of storefront frames and glazing at east and north areas completed.	
Installation of all exterior brick masonry completed.	
Completed installation of RTU roof curbs completed.	

Drew Freeman Middle School



Activity	30-Day Look-Ahead
Concrete curb and gutters completed.	<ul style="list-style-type: none"> ● Installation of light fixtures on level 1 of sector 1A to begin.

Base paving of all parking lots and the loading dock completed.	<ul style="list-style-type: none"> ● Insulating and closing of interior walls on level 2 of sector 1 to begin. ● Priming and painting and installation of ceiling grid on level 1 of sector 1B to begin. ● Rough-in fire protection in sector 2G and on level 2 of sector 1 is ongoing. ● Installation of ceramic tile in restrooms on level 1 of sector 1 to begin. ● Pouring of concrete sidewalks is ongoing.
All exterior window installations throughout the building completed.	
All exterior brick in sectors 1 and 2 completed.	
Spray fireproofing and TPO roofing in sectors 1 and 2 completed.	
Interior wall blocking completed.	

Hyattsville Middle School



Activity	30-Day Look-Ahead
Entrance canopy AVB completed.	<ul style="list-style-type: none"> ● MEP, sprinkler, and telecom overhead rough-ins, testing, and insulation are ongoing. ● Base asphalt paving at the lower lot to begin. ● Rough-ins at main mechanical and electrical rooms are ongoing. ● One-siding walls at kitchen and performance rooms to begin. ● Prime paint and first coat at classrooms and corridors in sector 1B to begin. ● ACT ceiling grid installation at sector 1A tower is ongoing. ● Light fixture and ceiling device installation at sector 1A tower to begin.
Grading and undercutting and underground site utilities under parking lots completed.	
Underground gas utilities at north end of site completed.	
RTU roof curbs completed.	
Concrete curbs and gutters at lower parking lot completed.	
Water testing at exterior storefronts completed.	

Kenmoor Middle School



Activity	30-Day Look-Ahead
Installation of underground chilled water piping, interior building gas line, and exterior metal panels completed.	<ul style="list-style-type: none"> ● Electrical in-wall rough-ins in sector 2B to be completed. ● Underground storm pipes MH 24 – MH 25 – MH 27 to begin. ● Temporary heat installation to begin. ● Asphalt base paving at bus parking lot to begin. ● Drywall close-in Sector 2B to begin. ● Prime and paint Sector 1A to begin. ● Hard ceiling inspection and close-in Sector 1B to be completed.
Dry close-ins throughout the building completed.	
All stairs except for the main learning stairs completed.	
Interior door frame installation completed.	
Installation of exterior aluminum storefront entrances completed.	
BGE transformer and final connection completed.	

Walker Mill Middle School



Activity	30-Day Look-Ahead
Hanging of drywall throughout the building completed.	<ul style="list-style-type: none"> ● Installation of light fixtures on level 1 of sector 1B to begin. ● Installation of underground site utilities throughout the project site is ongoing. ● First coat interior paint and ceiling grid installation on level 1 of sector 1A to begin. ● Installation of soil nail retaining wall to be completed. ● Hanging and finishing of walls and prime paint on level 2 of Sector 1B is ongoing. ● Elevator adjuster at sector 1 media center to begin. ● One side hang walls in the sector 2K kitchen to begin.
Installation of welded door frames, exterior windows, and TPO roofing throughout sector 1 completed.	
Installation of stairs 1 and 3 completed.	
Installation of storefront doors at all exterior completed.	
Caulking of exterior windows completed.	
Stormtech detention system in the west parking lot completed.	

COMMUNITY IMPACT

Blueprint Schools Program Newsletter

The *Blueprint Schools News & Updates* newsletter continues to serve as a great resource to stakeholders for program updates, construction updates, and Community Investment Program highlights. To date, sixteen (16) issues have been released to over 790 subscribers with an average open rate of 48.3%.

COMMUNITY UPDATES

The Program conducted Construction Town Halls in early October for each of the impacted communities, providing an update on the design and construction progress, showing the final renderings and answering community questions regarding the occupancy of the schools, sustainability goals, and further community impacts and enhancements that will be associated with each of the schools. Further, the Program will continue conducting monthly Community Town Hall

meeting with the Colin L. Powell Academy community to ensure concerns and issues are being addressed in a timely manner.

CLOSING STATEMENT

There is much work still to be done but our commitment stays absolutely the same, delivering the dynamic, world-class facilities for our Prince George’s County Public School students by school year 2023-2024.

APPENDIX