

WXY

 **Public
Engagement**
associates

**PGCPS
Comprehensive
School
Boundary
Initiative**

October 2022

Prince George's County Board of Education

Juanita Miller, Ed.D.

Chair

David Murray

District 1

Joshua M. Thomas

District 2

Pamela Boozer-Strother

District 3

Shayla Adams-Stafford

District 4

Zipporah Miller, Ed.D.

District 5

Sonya Williams

Vice Chair, District 9

Kenneth Harris II, Ph.D.

District 7

Madeline LaSalle Frazier, LCSW, Ed.S.

District 8 Appointed

Judy Mickens-Murray

Appointed

Curtis Valentine, M.P.P.

Appointed

Alvaro Ceron-Ruiz

Student Board Member

Monica E. Goldson, Ed.D., Secretary/Treasurer and Chief Executive Officer

Presentation Goals

- Review the boundary initiative process
- Review final scenario selection and refinement process
- Review anticipated areas of change

Boundary Initiative Process Overview

What is the Comprehensive School Boundary Initiative?

The PGCPs Comprehensive School Boundary Initiative is an effort to best utilize available school facilities in support of the district's academic objectives. The initiative will:

- Conduct a comprehensive analysis of boundaries, feeder patterns and program locations
- Develop three draft boundary scenarios with community input
- Refine draft boundary scenarios with community input
- Present proposed boundary adjustments to the Board of Education for approval

Visit www.pgcps.org/boundary to learn more.



Project Timeline

Jan 2021

Pre-Scenario
Engagement

Feb 2021 - May 2021

Scenario
Development

June 2021 - Nov 2021

Phase II
Engagement

Dec 2021 - Sept 2022

Final Scenario
Development

Nov 2022

Final approval
of new
boundaries

Sept 2023 - Sept 2025

Boundaries go
into effect

Phase 1 Recap

Introduction: The Role of Engagement

Engagement is an integral part of this initiative. The insights, priorities, and perspectives of PGCPS parents, students, staff, and other community members will inform this initiative, from draft scenarios to final boundary proposals. The objectives of Pre-Scenario Engagement were:

1 Inform the public about the boundary initiative and how they can be involved.

This includes explaining the goals and possible outcomes of the boundary initiative, the project timeline, and upcoming or ongoing opportunities to participate in the process.

2 Provide context and introduce concepts that will allow the public to meaningfully engage moving forward.

The first public meetings provided a snapshot of past, present and expected future conditions in PGCPs, with a focus on utilization and school capacity. The presentation also offered context about distance to school, and defined key concepts. This context was meant to equip participants to meaningfully engage with the process.

3 Understand community members' priorities as they relate to school boundaries.

It is critical to get an understanding of the public's priorities as they relate to school boundaries in PGCPs. Parents, students, staff and other community members bring important insights beyond what we can learn from data alone. These community priorities inform the development of draft scenarios.

Public engagement for the Boundary Initiative is a two-way process. The process is designed to both inform and educate members of the PGCPs community, and gather important data and insights about their experiences and priorities with PGCPs.

Phase 1: Participation Summary

5 1,157 757 7,880

Virtual
Community
meetings

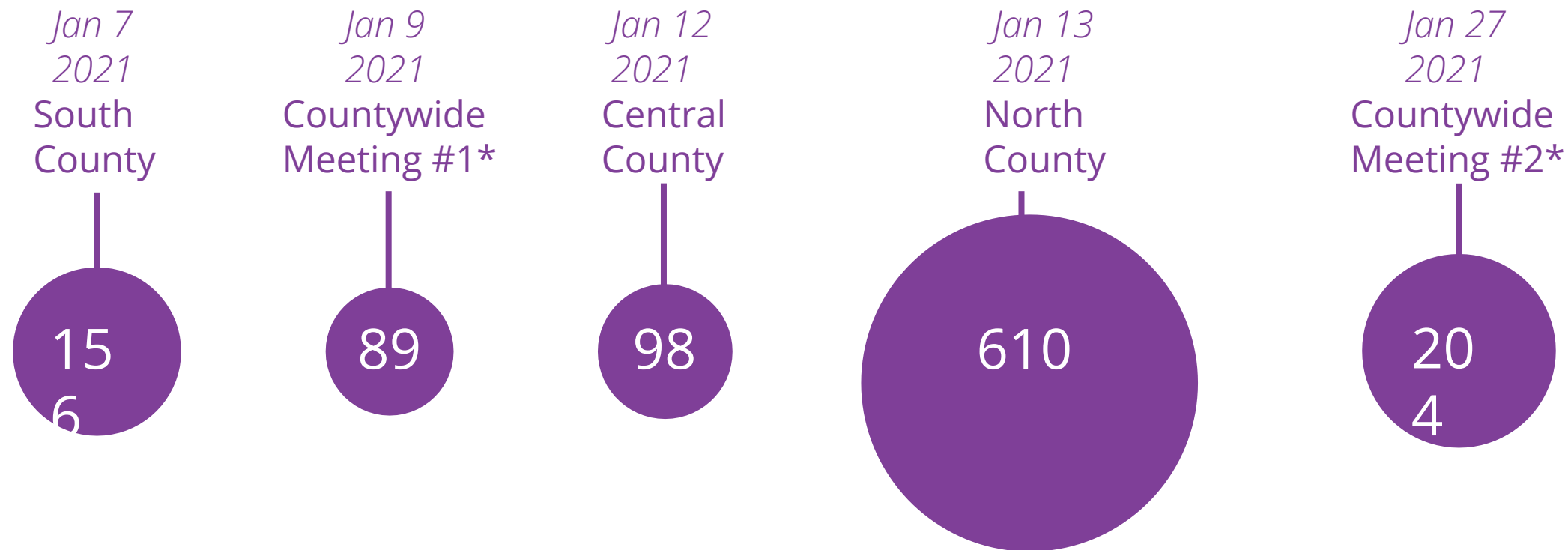
Total
participants

(attended for 20 minutes or more)

Comments
logged

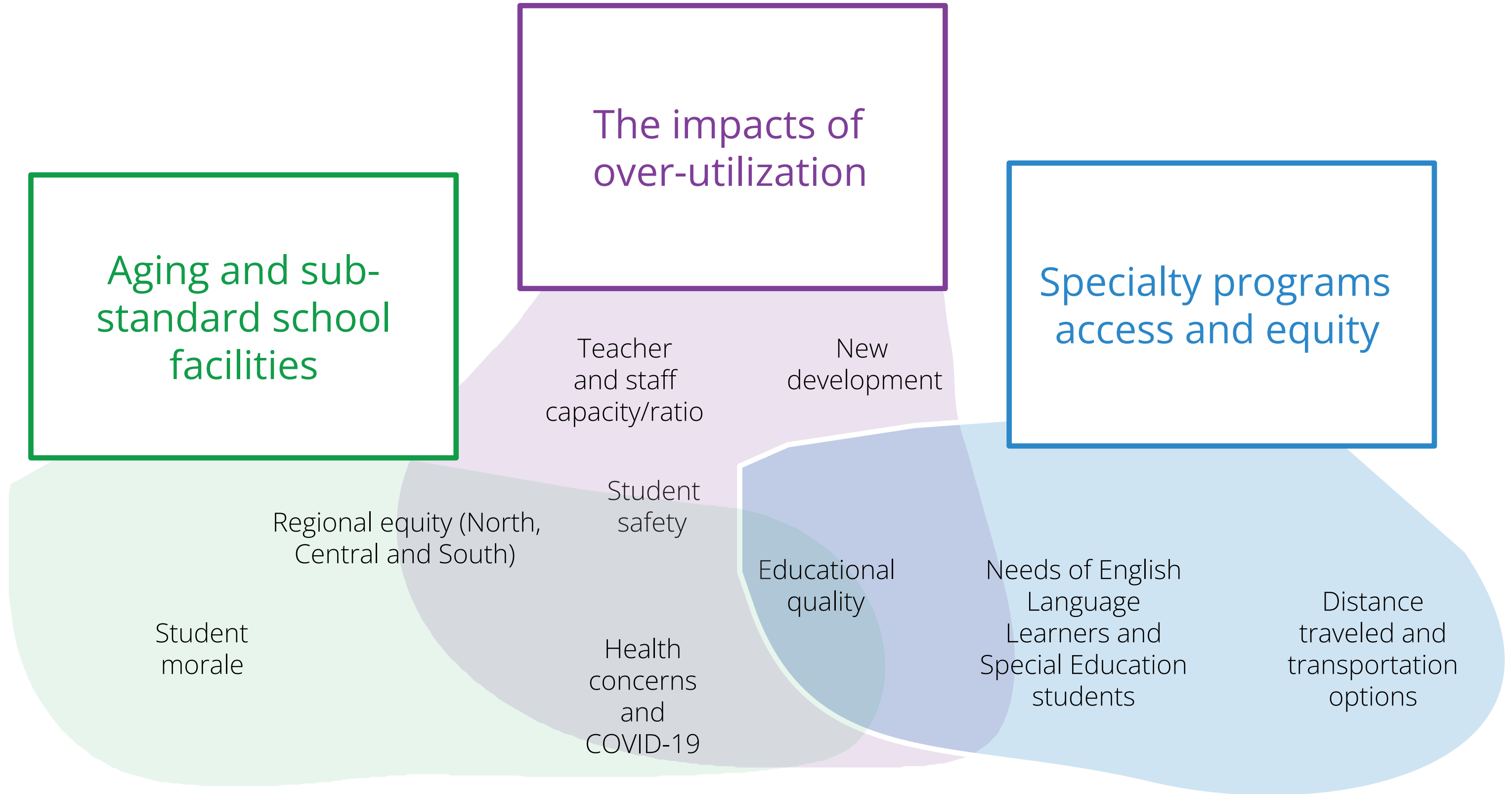
Website
views

Participants by meeting:



* Meeting conducted in Spanish

Community Conversations: Key Themes



Community Conversations: Other Themes

A broad range of other themes were raised during discussion at Community Conversations. The following pages outline some of these recurring themes.

Transportation and distance to school

- Some schools are too far to travel or walk to for students.
- Some boundaries place students far from school due to outdated busing programs that are no longer relevant.
- Distance to school is a challenge, especially for those traveling to specialty programs.
- Interest in mode of transport, including use of public transportation to travel to school.

“The distance is excessive. It is important for parents to be able to reach their students quickly during an emergency.”

COVID-19 implications in boundary decisions

- Consider hybrid or online learning after COVID.
- Air ventilation in facilities is increasingly important in light of COVID.

New development

- How do we accommodate all the recent housing development and planned, upcoming development?

School performance

- Consider school performance when considering boundary changes.

“New developments are coming in hot and heavy, but the schools are not keeping up. How will this affect school populations moving forward?”

- Student-teacher ratio is important for educational quality; interest in how this relates to utilization.

Equity

- It is important to consider issues of equity when making boundary decisions.
- Regional equity: Some participants were concerned about South County being forgotten or left behind in planning.
- Concerns about program access for students with disabilities and other special needs.

Safety and security

- Lack of transportation options and long commutes present safety concerns.
- Over-utilization creates increased risks for student safety and security at school.

Language programs

- Desire to see increased programs to support English language learners, especially Spanish speakers
- Desire to see more educators who speak Spanish in the schools

“ESOL is such a strong need for our community, and is only increasing in the schools. How is this need being reflected?”

Draft Scenarios Report

17 page summary
Available in English, Spanish & French
Full report is 119 pages + appendix

www.pgcps.org/boundary

PGCPS Comprehensive School Boundary Initiative

Draft Scenarios Report Summary
Spring 2021

Three Draft Scenarios

Each draft scenario has a unique set of goals and parameters.

1



Scenario 1

Address Utilization Extremes and Minimize Rezoning

Address the most severe instances of over- and under-utilization.

Redistrict as few students as possible.

2



Scenario 2

Improve Utilization as Widely as Possible

Optimize utilization as widely as possible.

Reduce the number of temporary classrooms in use, particularly those in poor condition.

Consolidate elementary schools as needed, prioritizing utilization.

3



Scenario 3

Maximize the Students Attending School in Updated Facilities

Ensure as many students as possible attend school in the newest/most updated facilities.

Remove the need for all temporary classrooms aside from those in good condition.

Phase 2 Recap

Phase 2 Engagement

In November 2021, members of the PGCPs community were invited to participate in a series of five virtual community conversations.

The community conversations included:



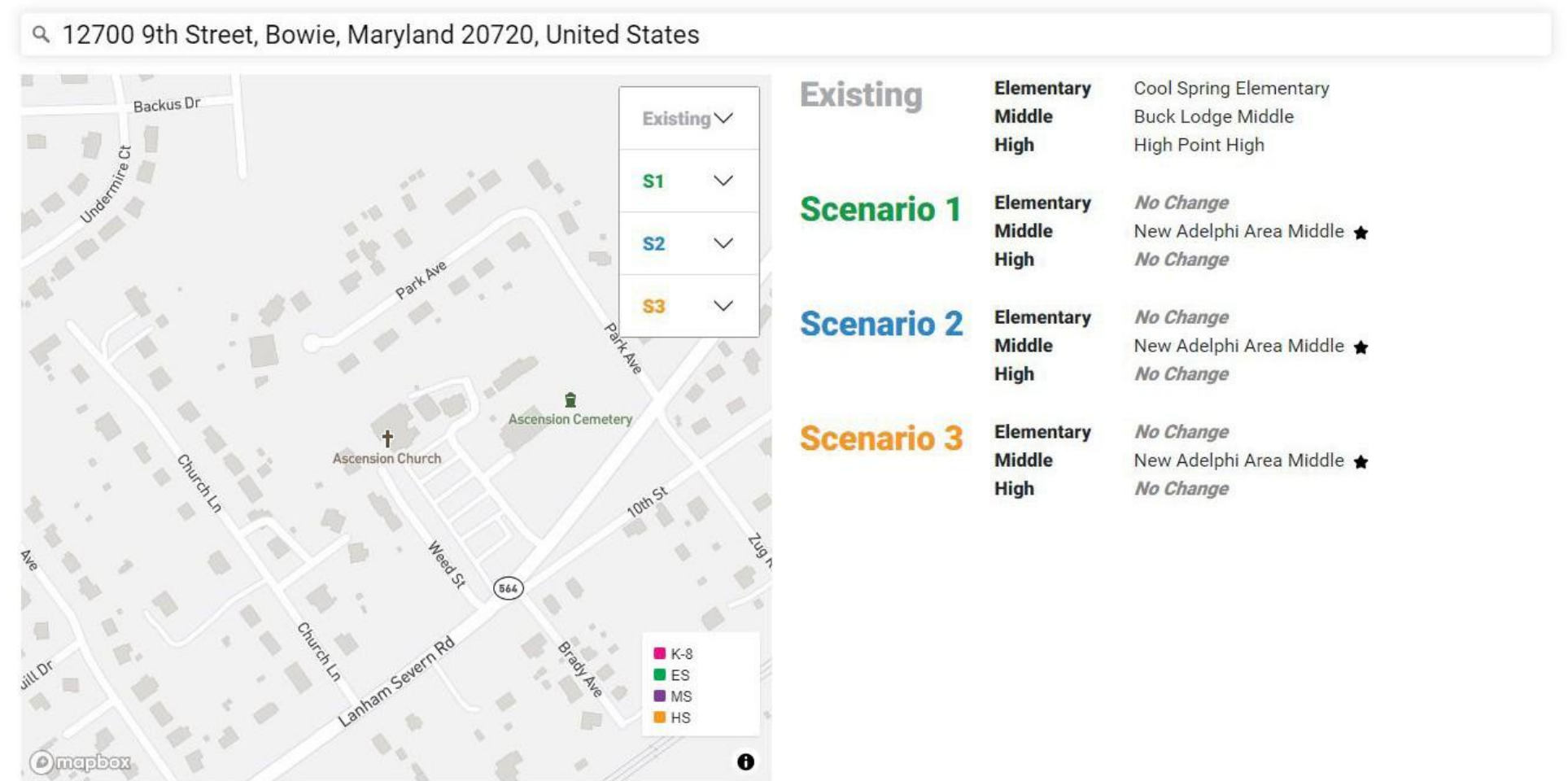
- **Presentations** about the three draft boundary scenarios and the initiative process
- Q&A with members of the Boundary Initiative team
- **Live polling** and use of the chat to gather insights from participants
- Demonstration and use of the **Online Boundary Explorer tool**
- **Facilitated breakout rooms** where small groups had a chance to share their priorities and recommendations for the final boundary scenarios

Draft Boundary Scenarios Explorer

www.pgcps.org/boundarytool

www.wxyplanning.com/pgcps-boundary-tool/

The online tool allowed community members to see how the three scenarios would impact them.



Feedback Survey

BOUNDARY Prince George's County Public Schools

Comprehensive School Boundary Initiative - Feedback Survey

INTRODUCTION

INSTRUCTIONS

The **Comprehensive School Boundary Initiative** is an effort to analyze current school boundaries, feeder patterns and program locations in PGcps. Drawing on this analysis and on insights from a thorough community engagement process, the initiative will develop scenarios for updated school boundaries. These scenarios will seek to address the school system's larger academic and financial objectives, including balancing facility utilization throughout the County and populating new and expanded school facilities. The Boundary Initiative process began in the Fall of 2020 and will conclude by February 2022. Potential boundary changes will be phased in beginning School Year 2023-24.

Please complete this survey to share your input on the three scenarios developed for new school boundaries in PGcps.

Next

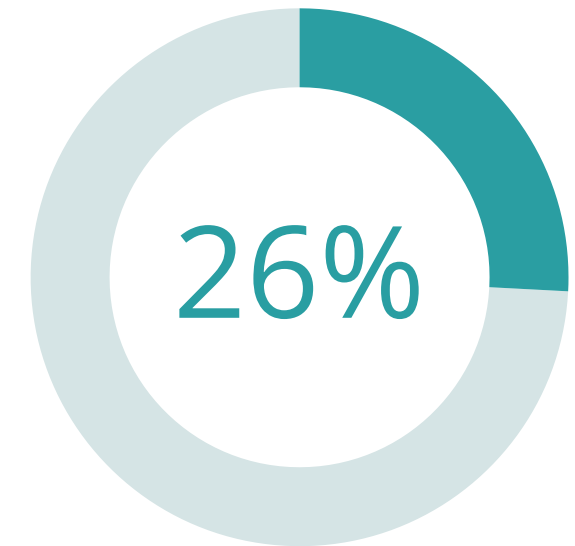
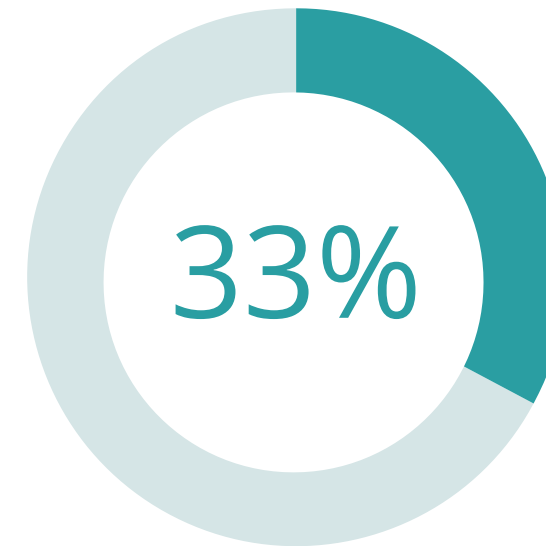
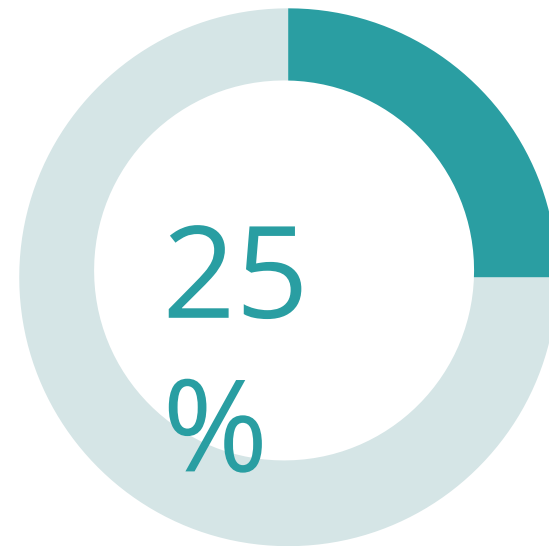
Online Survey: Participants and Priorities

Scenario 1

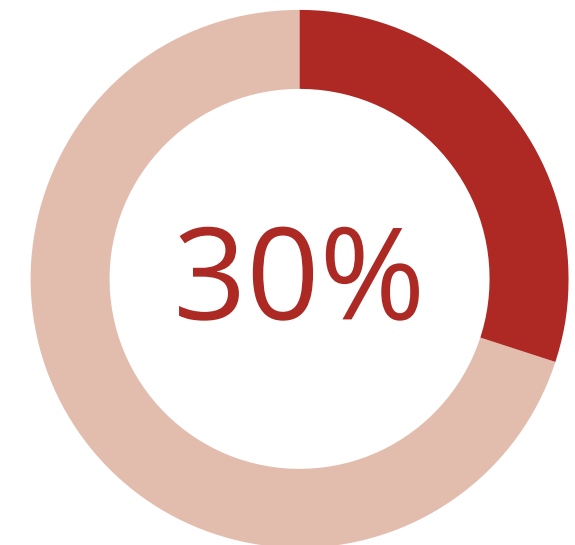
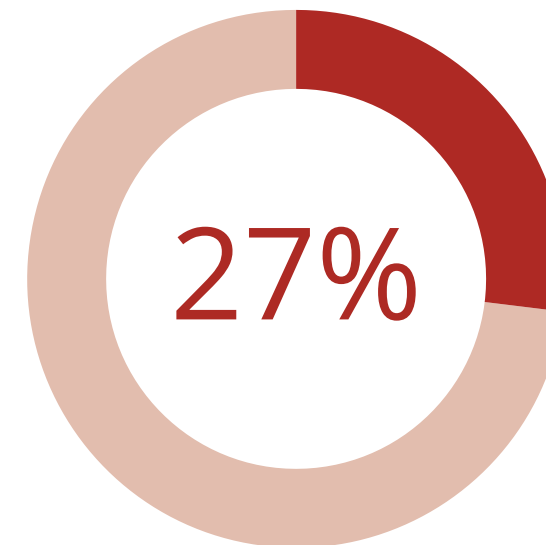
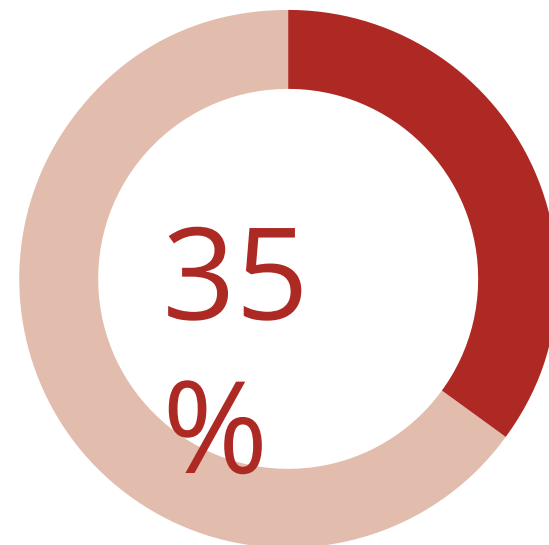
Scenario 2

Scenario 3

Percent of Respondents Strongly Satisfied



Percent of Respondents Strongly Unsatisfied



Phase 1 & 2 Engagement Overview

There were two phases of engagement during the School Boundary Initiative. Each phase used a variety of strategies to engage community members. All engagement was virtual due to COVID-19.

Activities and Reach (Phases 1 and 2)



- 10 community conversations (virtual public meetings) engaging 2,570 participants.
- An online survey and comment form that received a total of 1,948 responses.
- A project website that received over 13,194 views.
- An online tool with over 4,500 unique users.

Phase 1 & 2 Engagement Recap

Key Takeaways



- Across all engagement activities, **over-utilization** was seen as the **greatest priority** for the district to address.
- Engagement trends point to Scenario 2 as the preferred scenario for participating community members (including direct responses in the survey; priorities and comments in meetings; alignment with participant priorities).
- Many participants are concerned about how **development, school quality, and distance to school/transportation** will be taken into account in the final boundaries.

Scenario Selection & Refinement

Scenario Selection & Refinement

Engagement Summary

WXY conducted an analysis of Phase 2 engagement including community meetings, survey results, emails and online tool usage.

CEO and BAC Review

WXY reviewed the Phase 1 and 2 engagement with Dr. Goldson and the PGCPS Boundary Advisory Committee in detail. The BAC selected Scenario 2.

PGCPS Transportation Review

WXY conducted five meetings with the project team and routers from the Transportation department.

During the sessions, each proposed change was reviewed in detail.

Refinement Process

WXY implemented the agreed upon refinements and recalculated a set of key metrics.

BAC Review

WXY to review scenario selection and refinement process with BAC and collect additional feedback.

Refinement Criteria

Walk Zone

Distance to
School

Assignment &
Community
Stability

Consolidation

Utilization

Feeder
Patterns

Final Metrics

Utilization	SY 20/21	Scenario 2 (Phase 1A-1C)	
Utilization, with Temp Classrooms			
Schools in 80-95% utilization range	40 (27%)	60 (42%)	
Very over-/under-utilized schools	17 (12%)	7 (4%)	
Maximum utilization (overall)	127%	112%	
Minimum utilization (overall)	45%	45%	
Assignment Stability	SY 20/21	Students	Percent
Total students rezoned	68,123	9,143	13%
ES students	42,508	3,805	9%
MS students	25,615	5,338	21%
Distance to School	SY 20/21	S2 Updated	
Average distance to school	2.2 mi	2.3 mi	
ES students	1.3 mi	1.4 mi	
MS students	2.7 mi	2.6 mi	
Students in walk zone	36%	34%	
Facility Conditions	SY 20/21	S2 Updated	
% of students in CIP Cycle 0-2	47%	45%	
% of students in CIP Cycle 3-4	53%	55%	
Temp classrooms in use	397	296	
School Consolidations		6	

Scenario 2 Update Summary

Summary Information

- Reduces number of elementary schools with split articulation pattern from 20 to 14.
- Reduces number of middle schools with split articulation pattern from 27 to 18.
- Increases count of elementary walkers by 500.
- No change to average distance to school.
- Recommend elementary/middle boundary changes be adopted as Phase I; and high school boundary changes be revisited as Phase II when new school and programmatic changes come online.

Impacted Schools: Phase 1A (SY23-24)

Elementary School Boundary/Grade Structure Changes

Adelphi ES
Apple Grove ES
Barack Obama ES
Barnaby Manor ES
Beltsville Academy
Bond Mill ES
Bradbury Heights ES
Brandywine ES**
Carmody Hills ES
Carole Highlands ES
Catherine T Reed ES
Cherokee Lane ES***
Chillum ES
Columbia Park ES
Cool Spring ES***
Cora L Rice ES
Deerfield Run ES
Doswell E Brooks ES
Edward M Felegy ES
Flintstone ES
Forest Heights ES
Fort Foote ES
Francis Scott Key ES
Gaywood ES
Glenn Dale ES

Greenbelt ES
Highland Park ES
Hillcrest Heights ES
Hollywood ES
Hyattsville ES**
Indian Queen ES
J Frank Dent ES
James H Harrison ES
John H Bayne ES
Kettering ES
Langley Park-McCormick ES
Laurel ES
Lewisdale ES
Longfields ES
Magnolia ES
Mary Harris "Mother" Jones ES
Melwood ES
Montpelier ES
Mt Rainier ES
Northview ES
Oaklands ES
Oxon Hill ES
Paint Branch ES
Panorama ES
Perrywood ES
Princeton ES
Ridgecrest ES

Riverdale ES
Robert R Gray ES
Rockledge ES
Rogers Heights ES
Rosa L Parks ES
Rosaryville ES
Scotchtown Hills ES
Seabrook ES
Seat Pleasant ES
Suitland ES
Tayac ES
Thomas S Stone ES
Tulip Grove ES
University Park ES
Vansville ES
Whitehall ES
Woodmore ES

Consolidations

Concord ES
Pointer Ridge ES

November 2023

Isaac Gourdine MS
Potomac Landing ES

Middle School Boundary/Grade Structure Changes

Sonia Sotomayor MS at Adelphi*
Beltsville Academy
Benjamin Stoddert MS
Benjamin Tasker MS
Buck Lodge MS
Drew-Freeman MS*
Dwight D Eisenhower MS
G James Gholson MS
Greenbelt MS
Gwynn Park MS**
Hyattsville MS*
Kettering MS
Martin Luther King, Jr. MS
Nicholas Orem MS
Oxon Hill MS
Samuel Ogle MS
Stephen Decatur MS
Thurgood Marshall MS
Walker Mill MS*

**New/expanded facility under construction*

*** Blueprint Schools Phase II*

**** Traditional New School Model*

Red = over 100 students impacted

Impacted Schools: 1B and 1C

Phase 1B (SY 2024-2025)

Elementary School Boundary/Grade Structure Changes

Beacon Heights ES
Berwyn Heights ES
Bladensburg ES
Colin L Powell Academy*
Cooper Lane ES
Dodge Park ES
Fort Washington Forest ES
Gladys Noon Spellman ES
Glenridge ES**
James McHenry ES
Judge Sylvania W Woods, Sr. ES
Port Towns ES
Rogers Heights ES
Samuel Chase ES
Tayac ES
Templeton ES
Woodridge ES

Consolidations

Rose Valley ES

Middle School Boundary/Grade Structure Changes

Accokeek Academy
Charles Carroll MS**
Colin L Powell Academy*
G James Gholson MS
Greenbelt MS
Gwynn Park MS**
Hyattsville MS*
Kenmoor MS*
New Glenridge MS*
Oxon Hill MS
Thomas Johnson MS
William Wirt MS*

Phase 1C (SY 2025-2026)

Consolidations

Adelphi ES***

**New/expanded facility under construction*

*** Blueprint Schools Phase II*

**** Traditional New School Model*

Red = over 100 students impacted

Online Tool

www.wxyplanning.com/pgcps-boundary-tool-phase2/

Next Steps

Timeline and Community Engagement

Public Release and Hearings

- October 3 - Community Information Video
- October 13 - BOE Work Session - Boundary Proposal
- October 20 - Public Hearing (Virtual)
- October 25 - Public Hearing (Virtual)
- October 27 - Boundary Proposal (First Reader)
- November 10 - Boundary Proposal (Second Reader)

Final Approval

PGCPS will also provide regular updates on the boundary proposal through social media, targeted mailers, and at www.pgcps.org/boundary

WXY

 **Public
Engagement**
associates

**PGCPS
Comprehensive
School
Boundary
Initiative**

October 2022